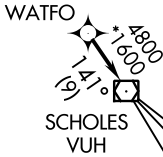
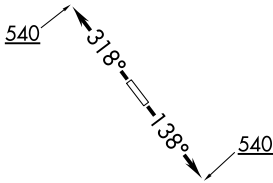


# WATFO FIVE DEPARTURE (RNAV)

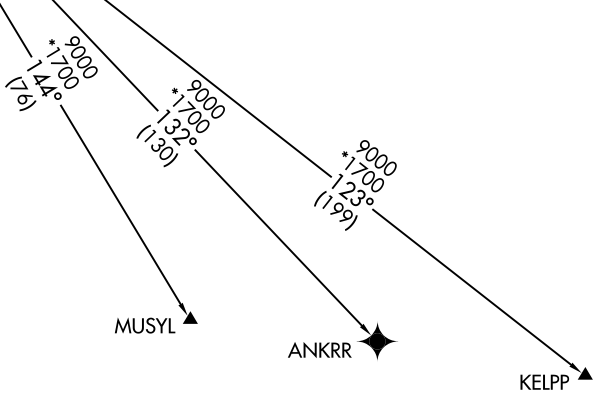
**TOP ALTITUDE:  
ASSIGNED BY ATC**

CTAF  
122.8  
HOUSTON DEP CON  
134.45 284.0



**TAKEOFF MINIMUMS:**  
Rwy 14, 32: Standard with minimum climb  
of 500' per NM to 540.

- NOTE: GPS required.
- NOTE: RADAR required.
- NOTE: RNAV 1.



NOTE: Chart not to scale.



## DEPARTURE ROUTE DESCRIPTION

TAKEOFF RWY 14: Climb on heading 138° to 540, for RADAR vectors to WATFO, thence. . . .

TAKEOFF RWY 32: Climb on heading 318° to 540, for RADAR vectors to WATFO, thence. . . .

. . . .on track 141° to VUH VOR/DME, then on (transition). Maintain ATC assigned altitude. Expect filed altitude 10 minutes after departure.

ANKRR TRANSITION (WATFO5.ANKRR)

KELPP TRANSITION (WATFO5.KELPP)

MUSYL TRANSITION (WATFO5.MUSYL)

# WATFO FIVE DEPARTURE (RNAV)

SC-5, 30 DEC 2021 to 27 JAN 2022

SC-5, 30 DEC 2021 to 27 JAN 2022