

APP CRS	Rwy Idg	<b>4440</b>
<b>146°</b>	TDZE	<b>721</b>
	Apt Elev	<b>742</b>

# RNAV (GPS) RWY 15

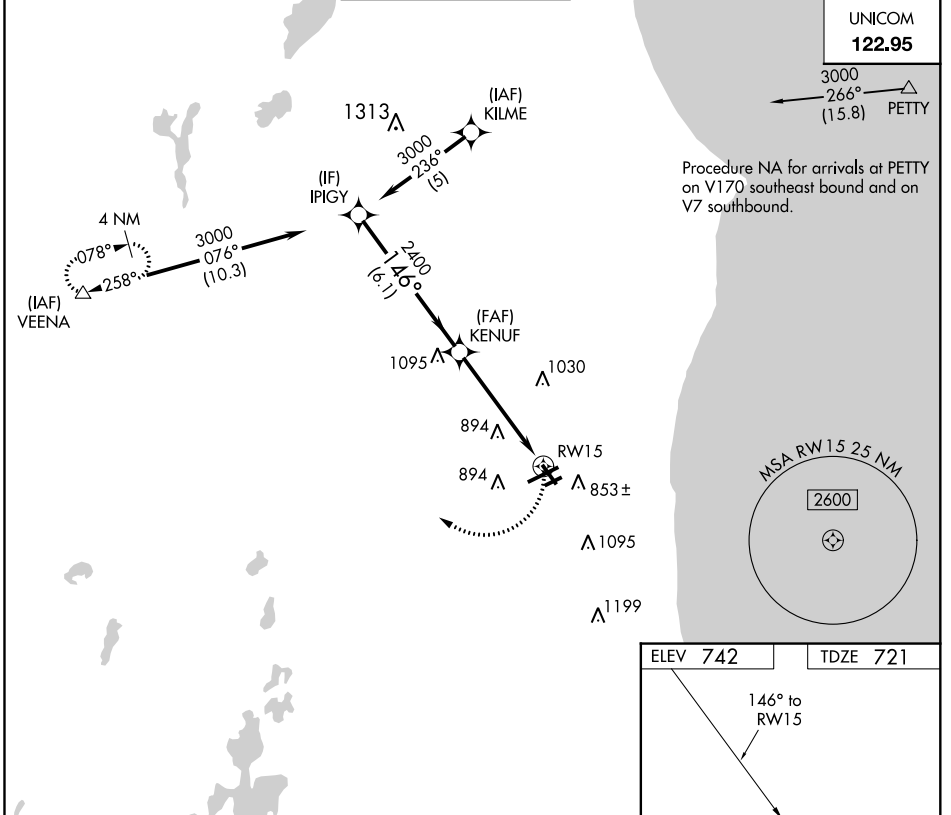
KENOSHA RGNL (ENW)

RNP APCH.

**▼** Rwy 15 helicopter visibility reduction below 1 SM NA. Straight-In and Circling Rwy 15 NA at night, Circling Rwy 7R NA at night.

**MISSED APPROACH:**  
Climbing right turn to 3000  
direct VEENA and hold.

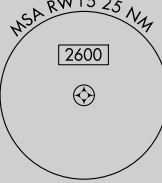
ATIS <b>127.175</b>	MILWAUKEE APP CON <b>135.875 317.725</b>	KENOSHA TOWER * <b>118.6 (CTAF) 0 353.6</b>	GND CON <b>121.875</b>	CLNC DEL <b>121.875</b>	CLNC DEL <b>118.6</b> (When twr closed)
------------------------	---	--	---------------------------	----------------------------	---



UNICOM  
**122.95**

3000  
266°  
(15.8) PETTY

Procedure NA for arrivals at PETTY on V170 southeast bound and on V7 southbound.



EC-3, 30 DEC 2021 to 27 JAN 2022

EC-3, 30 DEC 2021 to 27 JAN 2022

