

| | | |
|---------------------------|------------------------|------------------------|
| LOC I-MVN 111.7 | APP CRS 231° | Rwy Idg 5572 |
| | | TDZE 471 |
| | | Apt Elev 480 |

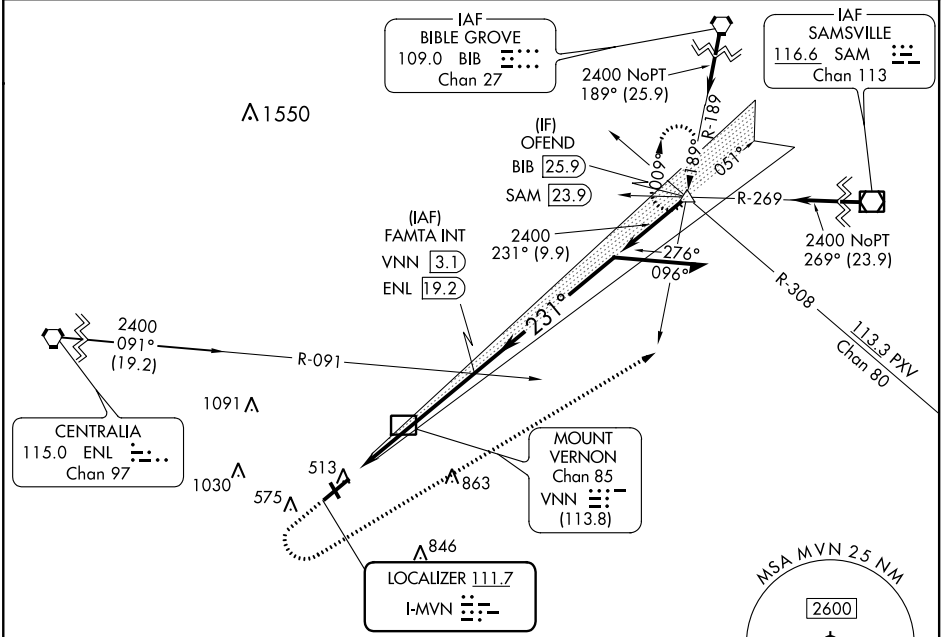
ILS or LOC RWY 23

MOUNT VERNON (MVN)

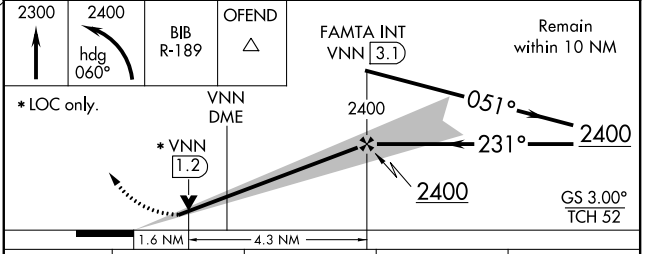
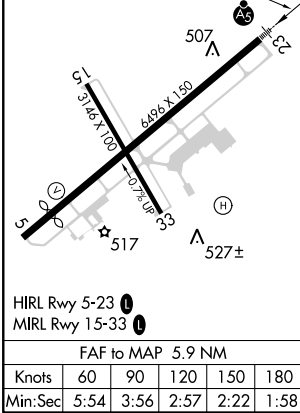
⚠ Circling Rwy 15, 33 NA at night. VDP NA when using Centralia altimeter setting. When local altimeter setting not received, use Centralia altimeter setting and increase all DA 45 feet and all MDA 60 feet and increase S-LOC 23 Cat C/D and Circling Cat C visibility ¼ SM. For inop ALS, when using Centralia altimeter setting, increase S-LOC 23 Cat C/D visibility to 1¼ SM.

MALSR MISSED APPROACH: Climb to 2300 then climbing left turn to 2400 on heading 060° and on BIB VORTAC R-189 to OFEND and hold.

| | | |
|--------------------------|--|---------------------------------|
| AWOS-3PT 118.2 | KANSAS CITY CENTER 127.7 351.825 | UNICOM 123.0 (CTAF) 0 |
|--------------------------|--|---------------------------------|



| | | |
|----------|----------|----------|
| ELEV 480 | D | TDZE 471 |
|----------|----------|----------|



| CATEGORY | A | B | C | D |
|-------------------|--------------------|----------------------|---------------------|---|
| S-ILS 23 | 671-½ 200 (200-½) | | | |
| S-LOC 23 | 1020-½ 549 (600-½) | 1020-1⅛ 549 (600-1⅛) | | |
| C CIRCLING | 1020-1 540 (600-1) | 1140-1¾ 660 (700-1¾) | 1380-3 900 (1000-3) | |

EC-3, 30 DEC 2021 to 27 JAN 2022

EC-3, 30 DEC 2021 to 27 JAN 2022