

| | | | |
|--|------------------------|-----------------------------|---|
| WAAS CH 63119 W06A | APP CRS 063° | Rwy Idg TDZE Apt Elev | 5013 394 398 |
|--|------------------------|-----------------------------|---|

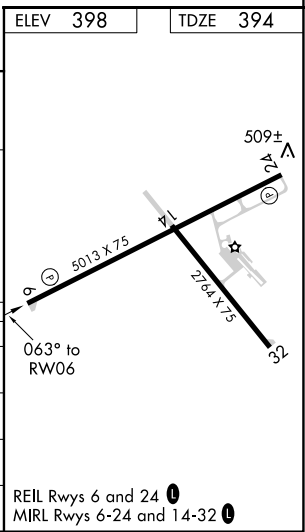
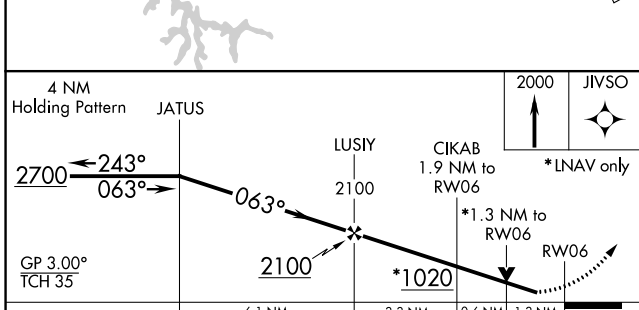
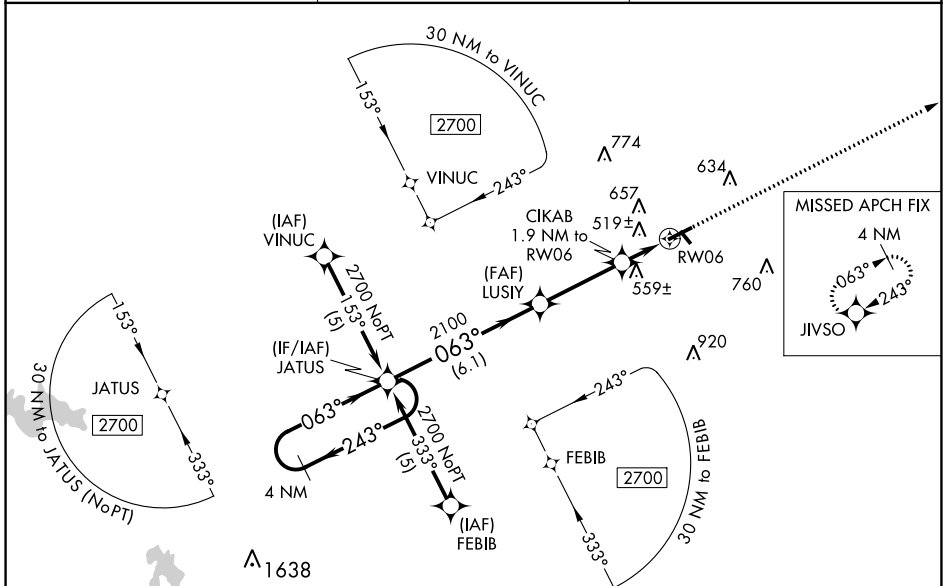
RNAV (GPS) RWY 6

HARRISBURG-RALEIGH (HSB)

⚠ Baro-VNAV NA when using Williamson County Rgnl altimeter setting. For uncompensated Baro-VNAV systems, LNAV/VNAV NA below -15°C (5°F) or above 48°C (118°F). DME/DME RNP-0.3 NA. Visibility reduction by helicopters NA. When local altimeter setting not received, use Williamson County Rgnl altimeter setting and increase all DA 62 feet and all MDA 80 feet; increase LPV all Cats, LNAV/VNAV all Cats, LNAV Cats C and D and Circling Cats C and D visibility ¼ mile. VDP NA with Williamson County Rgnl altimeter setting.

MISSED APPROACH:
Climb to 2000 direct JIVSO and hold.

| | | |
|--------------------------|--|---------------------------------|
| AWOS-3 135.925 | KANSAS CITY CENTER 127.475 346.275 | UNICOM 122.8 (CTAF) 0 |
|--------------------------|--|---------------------------------|



| CATEGORY | A | B | C | D |
|---------------|----------------------|-----------------------|-------------------------|-----------------------|
| LPV DA | | 682-1 | 288 (300-1) | |
| LNAV/ VNAV DA | | 958-2 | 564 (600-2) | |
| LNAV MDA | 820-1 | 426 (500-1) | 820-1¼ | 426 (500-1¼) |
| CIRCLING | 880-1 482 (500-1) | 1020-1 622 (700-1) | 1020-1¾ 622 (700-1¾) | 1020-2 622 (700-2) |

REIL Rwy 6 and 24 0
MIRL Rwy 6-24 and 14-32 0

EC-3, 30 DEC 2021 to 27 JAN 2022

EC-3, 30 DEC 2021 to 27 JAN 2022