

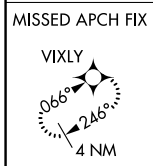
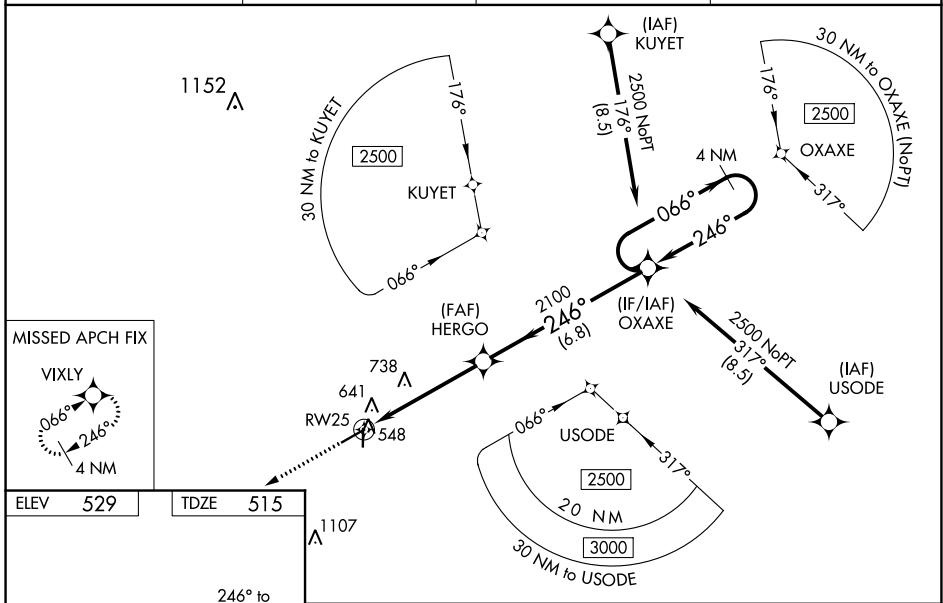
WAAS CH 50301 W25A	APP CRS 246°	Rwy Idg TDZE Apt Elev	5500 515 529
--	------------------------	-----------------------------	---

RNAV (GPS) RWY 25

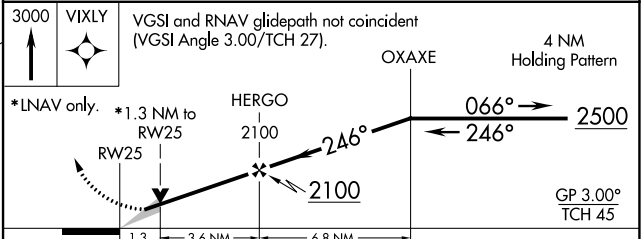
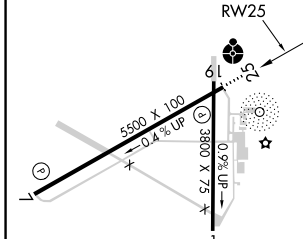
AIKEN RGNL (AIK)

RNP APCH.	<p>ODALS</p>	<p>MISSED APPROACH: Climb to 3000 direct VIXLY and hold.</p>
<p>▽ Baro-VNAV NA when using Augusta Rgnl at Bush Fld altimeter setting. △ NA For uncompensated Baro-VNAV systems, LNAV/VNAV NA below -16°C or above 40°C. VDP NA with Augusta Rgnl at Bush Fld altimeter setting. When local altimeter setting not received, use Augusta Rgnl at Bush Fld altimeter setting: increase LPV all Cats DA to 869 feet, LNAV/VNAV all Cats DA to 927 feet and all visibilities ¾ mile; increase all MDA 120 feet and Cat C/D visibilities ¼ mile. For inop ODALS, increase LPV all Cats visibility to ¾ mile, LNAV/VNAV all Cats to 1 ½ mile and LNAV Cat C/D to 1 ¼ mile. For inop ODALS when using Augusta Rgnl at Bush Fld altimeter setting, increase LPV all Cats visibility to 1 ¼ mile, LNAV/VNAV all Cats to 1 ½ mile and LNAV Cat D to 1 ¾ mile.</p>		

AWOS-3 118.025	AUGUSTA APP CON * 119.15 284.625	CLNC DEL 126.075	UNICOM 122.8 (CTAF)
--------------------------	--	----------------------------	-------------------------------



ELEV 529	TDZE 515
----------	----------



CATEGORY	A	B	C	D
LPV DA	765-¾ 250 (300-¾)			
LNAV/VNAV DA	823-1 308 (300-1)			
LNAV MDA	940-¾ 425 (500-¾)		940-1/8 425 (500-1/8)	

SE-2, 30 DEC 2021 to 27 JAN 2022

SE-2, 30 DEC 2021 to 27 JAN 2022