

NDB AIK	APP CRS	Rwy Idg	<b>5500</b>
<b>347</b>	<b>225°</b>	TDZE	<b>515</b>
		Apt Elev	<b>529</b>

# NDB RWY 25

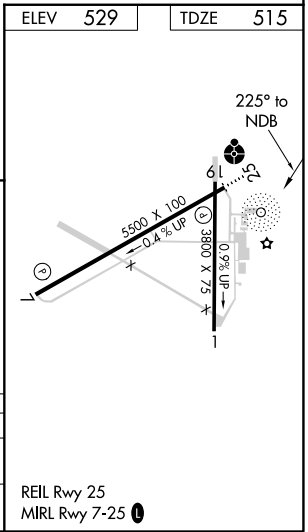
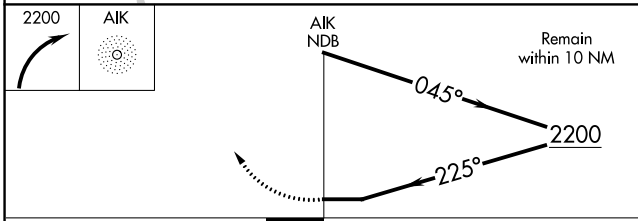
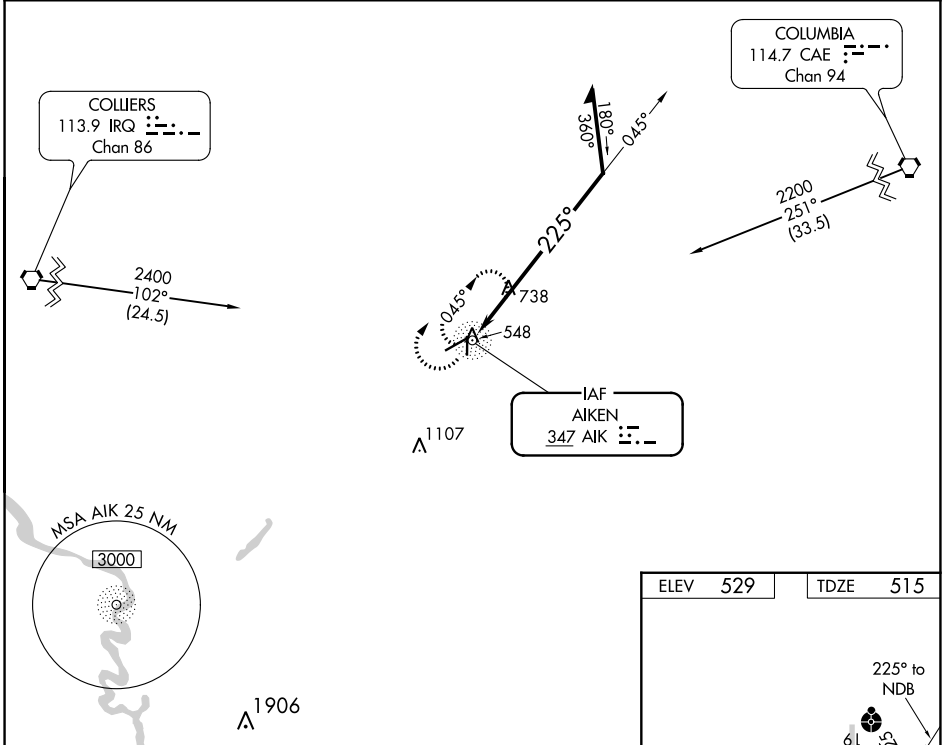
AIKEN RGNL (AIK)

**NA** When local altimeter setting not received, use Augusta Rgnl at Bush Fld altimeter setting and increase all MDAs 120 feet; increase S-25 Cats B/C/D and Circling Cat C visibility ¼ SM. For inop ODALS, increase S-25 Cat C/D visibility to 1 7/8 mile. For inop ODALS when using Augusta Rgnl at Bush Fld altimeter setting, increase S-25 Cat C/D visibility to 2 1/2 mile. Helicopter visibility reduction below 3/4 SM NA.

**ODALS**

**MISSED APPROACH:** Climbing right turn to 2200 in AIK NDB holding pattern.

AWOS-3 <b>118.025</b>	AUGUSTA APP CON ★ <b>119.15 284.625</b>	CLNC DEL <b>126.075</b>	UNICOM <b>122.8 (CTAF) 0</b>
--------------------------	--	----------------------------	---------------------------------



CATEGORY	A	B	C	D
S-25	1180-3/4	665 (700-3/4)	1180-1 3/4	665 (700-1 3/4)
CIRCLING	1180-1	651 (700-1)	1180-1 3/4 651 (700-1 3/4)	1420-3 891 (900-3)

SE-2, 30 DEC 2021 to 27 JAN 2022

SE-2, 30 DEC 2021 to 27 JAN 2022