

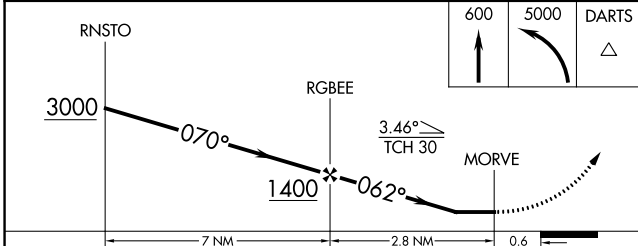
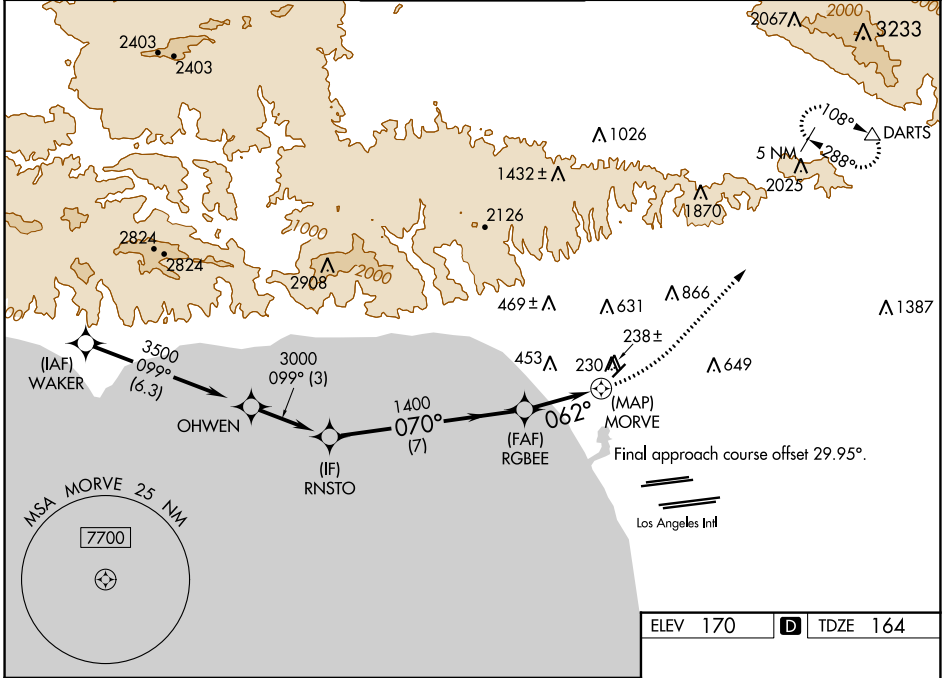
WAAS CH 77839 W03B	APP CRS 062°	Rwy Idg TDZE 164 Apt Elev 170	3500
--	------------------------	---	-------------

RNAV (GPS) Z RWY 3

SANTA MONICA MUNI (SMO)

<p>▽ Rwy 3 helicopter visibility reduction below 1 SM NA. ▲ DME/DME RNP-0.3 NA.</p>	<p>MISSED APPROACH: Climb to 600 then climbing left turn to 5000 direct DARTS and hold, do not exceed 175K when continuing climb-in-hold to 5000. *Missed approach requires minimum climb of 290 feet per NM to 3800.</p>
---	---

ATIS 119.15	SOCAL APP CON 128.5 235.975	SANTA MONICA TOWER * 120.1 (CTAF) 257.8	GND CON 121.9	UNICOM 122.95
-----------------------	---------------------------------------	---	-------------------------	-------------------------



ELEV 170	D TDZE 164
----------	-------------------

211±
 TWR 246
 1.2% UP
 225
 175
 MRL Rwy 3-21
 REL Rwy 21

CATEGORY	A	B	C	D
LP MDA*	460-1	296 (300-1)		NA
LP MDA	1260-1¼ 1096 (1100-1¼)	1260-1½ 1096 (1100-1½)		NA
LNAV MDA*	500-1	336 (400-1)		NA
LNAV MDA	1380-1¼ 1216 (1300-1¼)	1380-1½ 1216 (1300-1½)		NA

SW-3, 30 DEC 2021 to 27 JAN 2022

SW-3, 30 DEC 2021 to 27 JAN 2022