

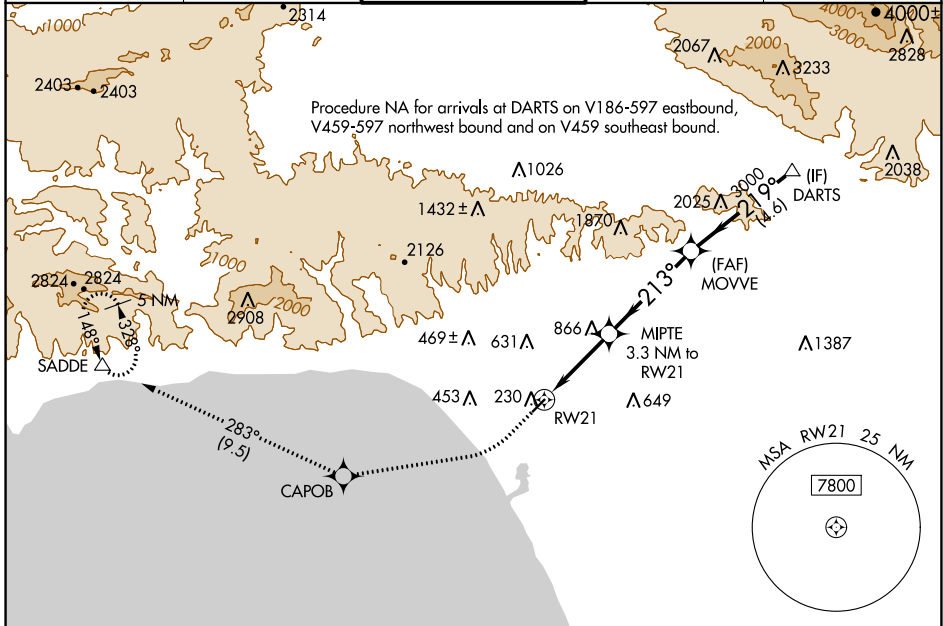
WAAS CH <b>90339</b> <b>W21A</b>	APP CRS <b>213°</b>	Rwy Idg TDZE <b>170</b> Apt Elev <b>170</b>
--	------------------------	---

# RNAV (GPS) RWY 21

SANTA MONICA MUNI (SMO)

RNP APCH.	MISSED APPROACH: Climb to 600 then climbing right turn to 5000 direct CAPOB and on track 283° to SADDE and hold, continue climb-in-hold to 5000.
<p>▼ For uncompensated Baro-VNAV systems, LNAV/VNAV NA below 5°C (41°F) or above 14°C (58°F). Rwy 21 helicopter visibility reduction below 1 SM NA.</p>	

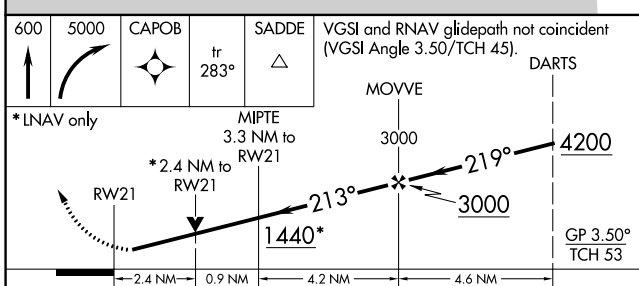
ATIS <b>119.15</b>	SOCAL APP CON <b>128.5 235.975</b>	SANTA MONICA TOWER* <b>120.1</b> (CTAF) <b>257.8</b>	GND CON <b>121.9</b>	UNICOM <b>122.95</b>
-----------------------	---------------------------------------	---	-------------------------	-------------------------



SW-3, 30 DEC 2021 to 27 JAN 2022

SW-3, 30 DEC 2021 to 27 JAN 2022

## RADAR REQUIRED



CATEGORY	A	B	C	D
LPV DA		440-1	270 (300-1)	
LNAV/VNAV DA		685-1 3/8	515 (600-1 3/8)	
LNAV MDA	1120-1 1/4	950 (1000-1 1/4)	1120-2 1/2	950 (1000-2 1/2)

ELEV 170	<b>D</b> TDZE 170
----------	-------------------

MIRL Rwy 3-21 **1**  
REIL Rwy 21 **1**