

# CTRUS FOUR DEPARTURE (RNAV)

AL-5023 (FAA)

SANTA MONICA MUNI (SMO)  
SANTA MONICA, CALIFORNIA

SW-3, 30 DEC 2021 to 27 JAN 2022

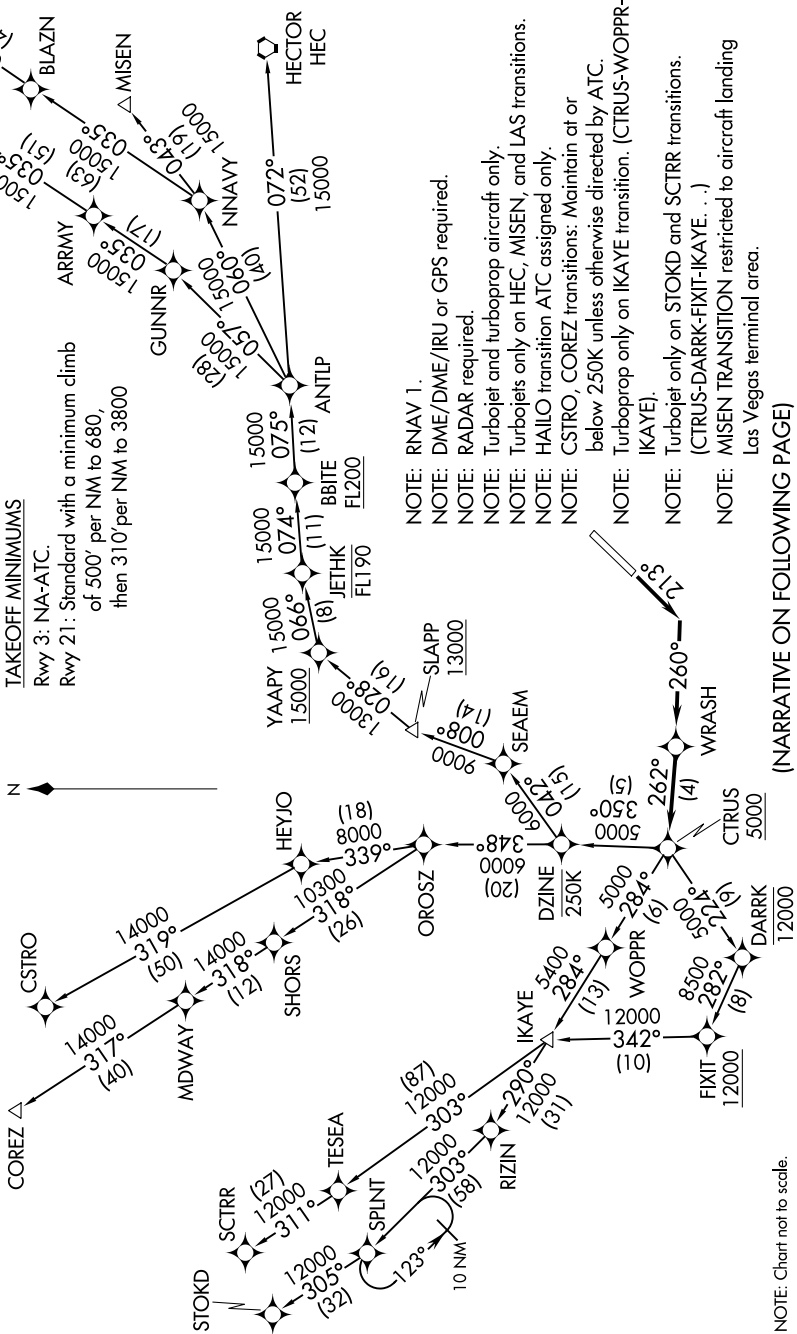
**TOP ALTITUDE:**  
**IKAYE TRANSITION: AS ASSIGNED BY ATC;**  
**ALL OTHER TRANSITIONS: FL230**

### TAKEOFF MINIMUMS

Rwy 3: NA-ATC.

Rwy 21: Standard with a minimum climb of 50' per NM to 680, then 310' per NM to 3800

ATIS 119.15  
SANTA MONICA TOWER\* 120.1 257.8  
SOCAL DEP CON 125.2 323.275



- NOTE: RNAV 1.
- NOTE: DME/DME/IRU or GPS required.
- NOTE: RADAR required.
- NOTE: Turbojet and turboprop aircraft only.
- NOTE: Turbojets only on HEC, MISEN, and LAS transitions.
- NOTE: HAILO transition ATC assigned only.
- NOTE: CSTRO, COREZ transitions: Maintain at or below 250K unless otherwise directed by ATC.
- NOTE: Turboprop only on IKAYE transition. (CTRUS-WOPPR-IKAYE).
- NOTE: Turbojet only on STOKD and SCTR transitions. (CTRUS-DARRK-FIXIT-IKAYE. . .)
- NOTE: MISEN TRANSITION restricted to aircraft landing Las Vegas terminal area.

(NARRATIVE ON FOLLOWING PAGE)

SW-3, 30 DEC 2021 to 27 JAN 2022

# CTRUS FOUR DEPARTURE (RNAV)

(CTRUS4.CTRUS) 10SEP20

SANTA MONICA, CALIFORNIA  
SANTA MONICA MUNI (SMO)