

# CHOI THREE DEPARTURE (RNAV)

AL-5023 (FAA)

SANTA MONICA MUNI (SMO)  
SANTA MONICA, CALIFORNIA

SW-3, 30 DEC 2021 to 27 JAN 2022

ATIS  
119.15  
SANTA MONICA TOWER ★  
120.1 257.8  
SOCAL DEP CON  
135.05 317.5

NOTE: RNAV 1.

NOTE: DME/DME/IRU or GPS required.

NOTE: RADAR required.

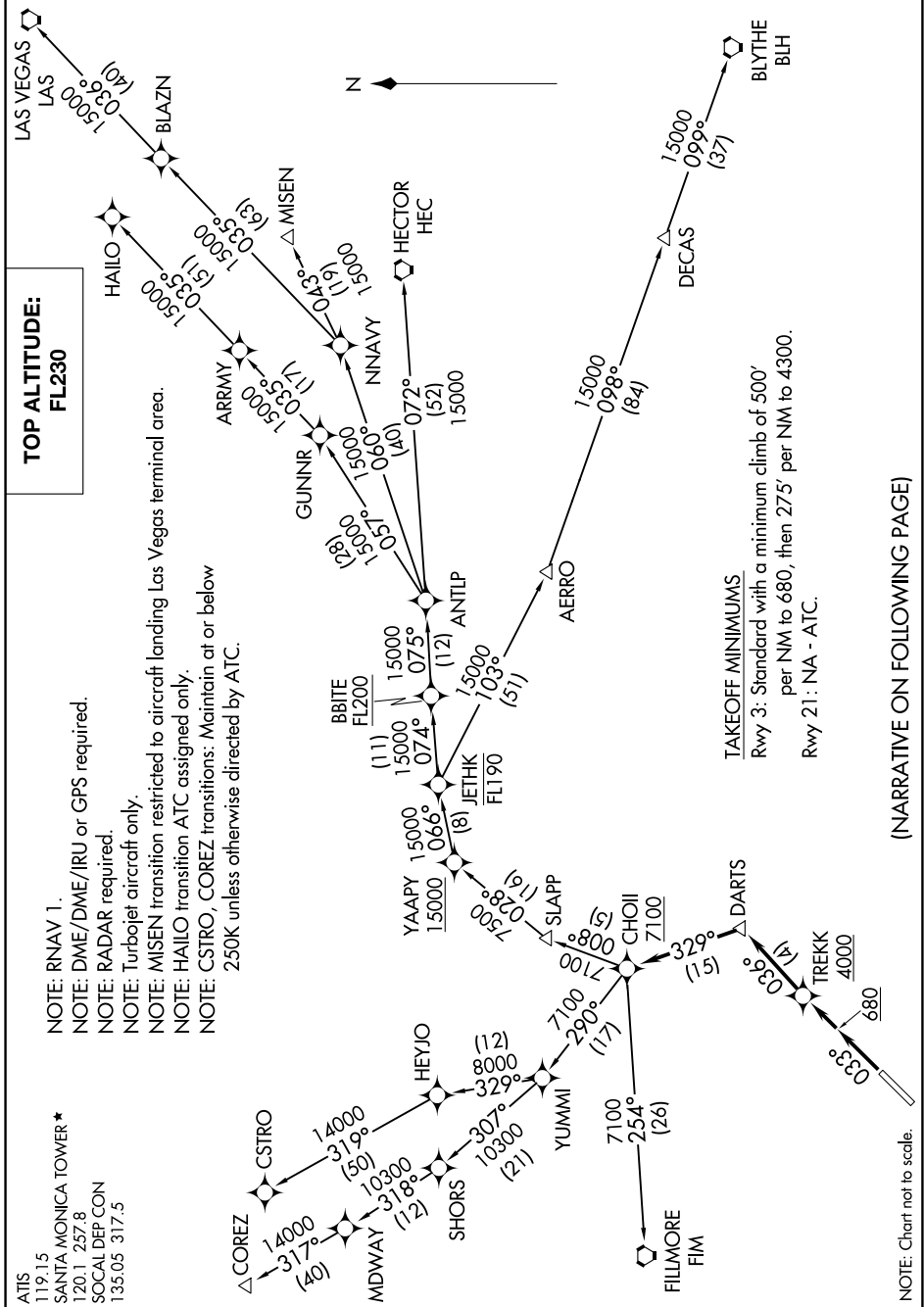
NOTE: Turbojet aircraft only.

NOTE: MISEN transition restricted to aircraft landing Las Vegas terminal area.

NOTE: HAILO transition ATC assigned only.

NOTE: CSTRO, COREZ transitions: Maintain at or below 250K unless otherwise directed by ATC.

**TOP ALTITUDE:  
FL230**



TAKEOFF MINIMUMS

Rwy 3: Standard with a minimum climb of 500' per NM to 680, then 275' per NM to 4300.  
Rwy 21: NA - ATC.

(NARRATIVE ON FOLLOWING PAGE)

SW-3, 30 DEC 2021 to 27 JAN 2022

# CHOI THREE DEPARTURE (RNAV)

10SEP20

SANTA MONICA, CALIFORNIA  
SANTA MONICA MUNI (SMO)

NOTE: Chart not to scale.