

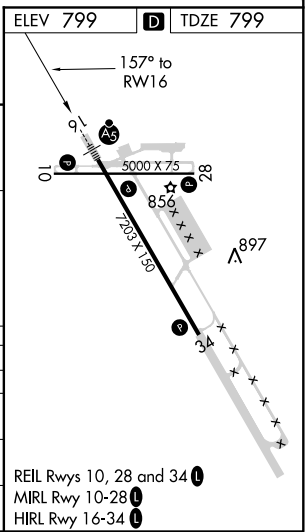
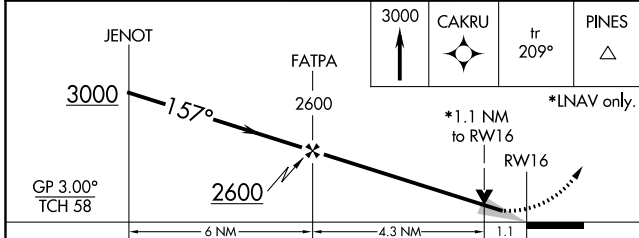
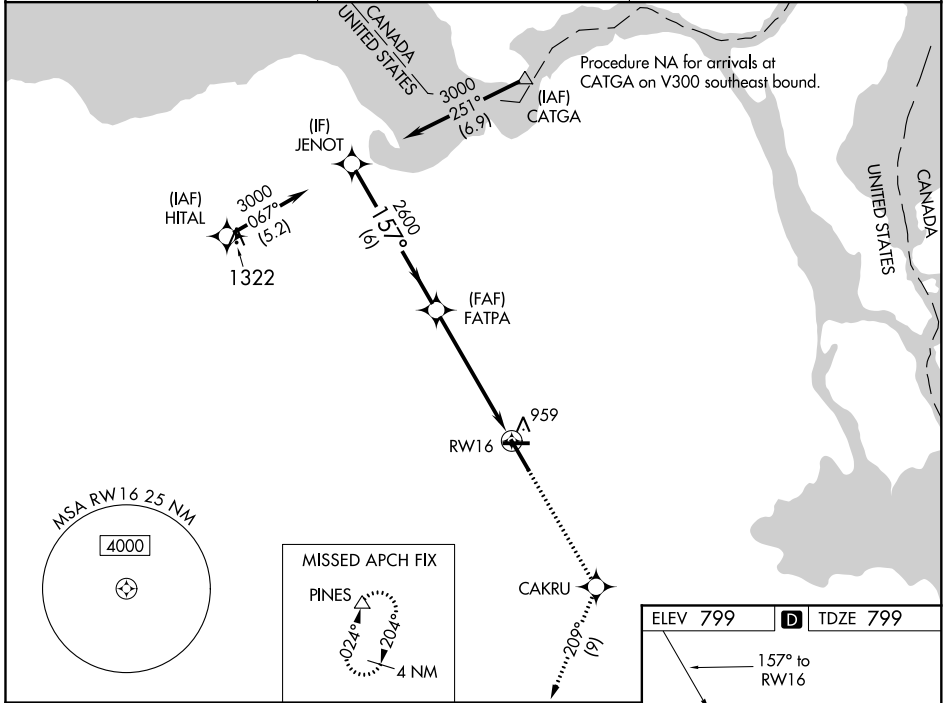
WAAS CH <b>69215</b> <b>W16A</b>	APP CRS <b>157°</b>	Rwy Idg <b>7203</b> TDZE <b>799</b> Apr Elev <b>799</b>
--	------------------------	---

# RNAV (GPS) RWY 16

CHIPPEWA COUNTY INTL (CIU)

RNP APCH.	MALSR	MISSED APPROACH: Climb to 3000 direct CAKRU and on track 209° to PINES and hold.
<p>For uncompensated Baro-VNAV systems, LNAV/VNAV NA below -16°C or above 54°C. For inop ALS, increase LPV all Cats, LNAV/VNAV all Cats and LNAV Cats A/B/C ½ SM; increase LNAV Cat D ¼ SM.</p>		

AWOS-3PT <b>127.575</b>	TORONTO CENTER <b>132.65 344.5</b>	UNICOM <b>123.0 (CTAF)</b>
----------------------------	---------------------------------------	-------------------------------



CATEGORY	A	B	C	D
LPV DA	1068-½		269 (300-½)	
LNAV/VNAV DA	1204-1		405 (500-1)	
LNAV MDA	1220-½ 421 (500-½)		1220-¾ 421 (500-¾)	
CIRCLING	1260-1 461 (500-1)		1260-1½ 461 (500-1½)	
			1360-2 561 (600-2)	

EC-1, 30 DEC 2021 to 27 JAN 2022

EC-1, 30 DEC 2021 to 27 JAN 2022