

MARYSVILLE, CALIFORNIA

HI-TACAN Z RWY 15

TACAN BAB Chan 23	APCH CRS 153°	Rwy ldg 12,001	TDZE 113
		Arprt Elev 113	

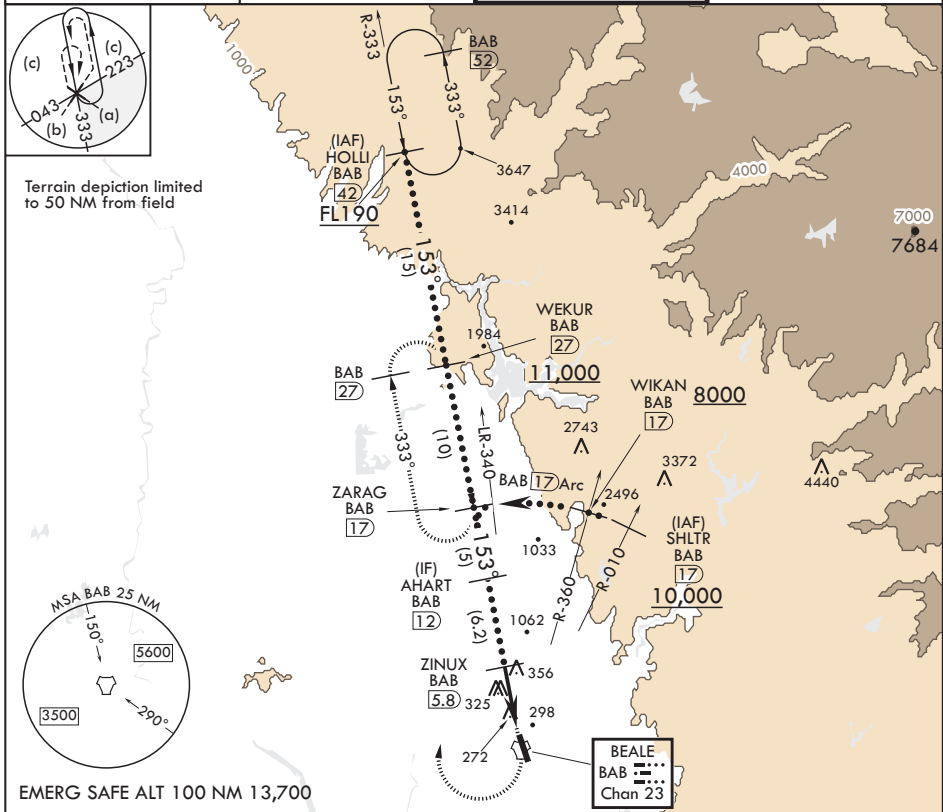
AL-771 (USAF)

BEALE AFB (KBAB)

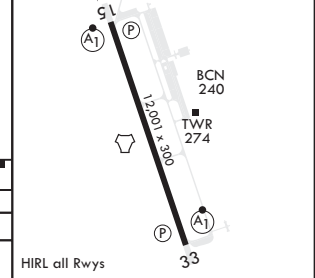
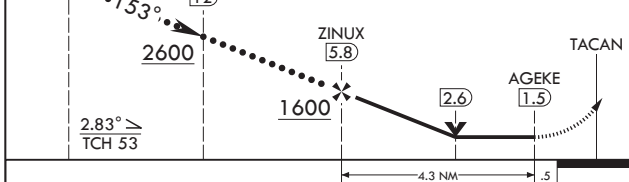
▼ * When ALS inop, increase CAT CDE vis to 1 1/2 miles.
 ** Circling not authorized E of Rwy 15-33.

ALSF-1
 MISSED APPROACH: Climb to 4700 direct to BAB TACAN. Turn right to intercept BAB R-333 to ZARAG and hold, continue to climb in hold to 4700.

ATIS* 124.55 273.5	NORCAL APP CON 125.4 259.1	TOWER* 119.4 284.75	GND CON 121.6 257.75
-----------------------	-------------------------------	------------------------	-------------------------



ZARAG 17	4700	BAB	ELEV 113	TDZE 113
----------	------	-----	----------	----------



CATEGORY	C	D	E
S-15*	640/55	527	(600-1)
☐ CIRCLING**	640-1½ 527 (600-1½)	680-2 567 (600-2)	840-2½ 727 (800-2½)

HIRL all Rws

MARYSVILLE, CALIFORNIA

39°08'N - 121°26'W

BEALE AFB (KBAB)

Amdt 5 20JUL17

HI-TACAN Z RWY 15

SW-2, 30 DEC 2021 to 27 JAN 2022

SW-2, 30 DEC 2021 to 27 JAN 2022