

MARYSVILLE, CALIFORNIA

HI-ILS or LOC Z RWY 15

LOC I-BAB 109.5	APCH CRS 145°	Rwy ldg TDZE Arpt Elev	12,001 113 113
---------------------------	-------------------------	------------------------------	---

AL-771 (USAF)

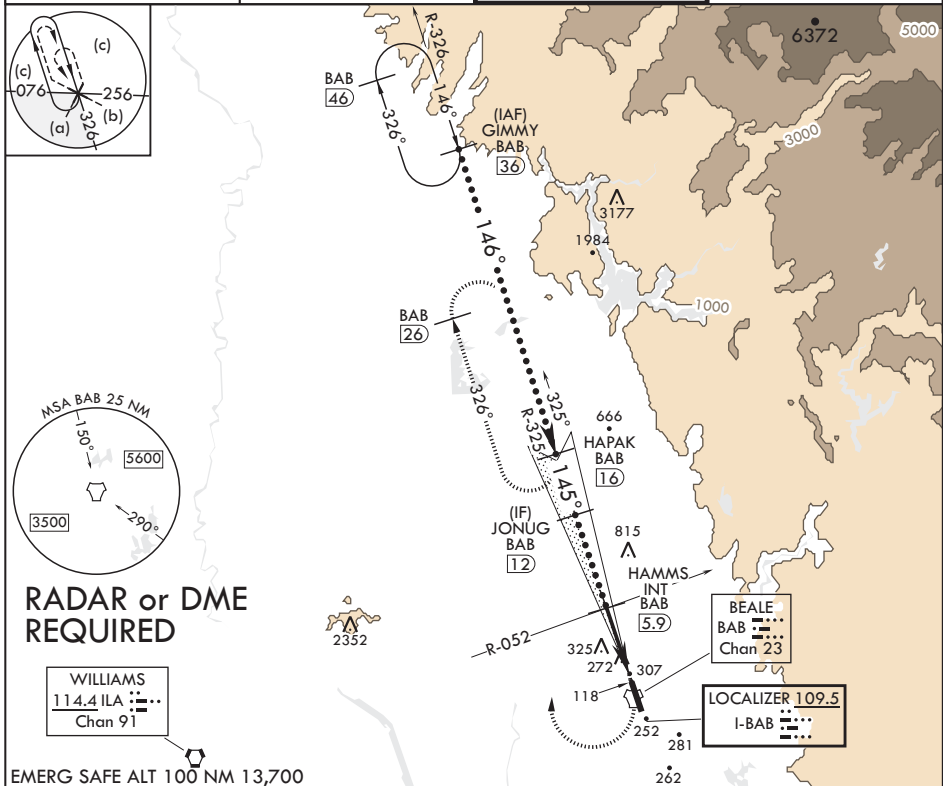
BEALE AFB (KBAB)

* When ALS inop, increase CAT CDE RVR to 40 and vis to 3/4 mile.
 ** When ALS inop, increase CAT CDE vis to 1 3/8 miles.
 *** Circling not authorized E of Rwy 15-33.

ALSF-1
A1

MISSED APPROACH: Climb to 4400 direct to BAB TACAN. Turn right to intercept BAB R-326 to HAPAK and hold, continue climb in hold to 4400.

ATIS* 124.55 273.5	NORCAL APP CON 125.4 259.1	TOWER* 119.4 284.75	GND CON 121.6 257.75
------------------------------	--------------------------------------	-------------------------------	--------------------------------



GIMMY (36) HAPAK (16) JONUG (12) HAMMS INT (5.9) HEGOP (1.5) BAB TACAN HIRL all Rwys	VGS1 and glideslope not coincidental. 4400 BAB BAB R-326	ELEV 113 TDZE 113 145° 4.9 NM from FAF 12,000 x 3600 BCN 240 TWR 274		
GS 2.75° TCH 47 12,000 3600 2600 1600 4.4 NM 0.5	146° 145° 145° 2.6 0.5	1177 33 A1		
CIRCLING***	CATEGORY S-ILS 15* S-LOC 15**	C 313/24 620/55 620-1½ 507 (600-1½)	D 200 507 680-2 567 (600-2)	E (200-½) (600-1) 840-2½ 727 (800-2½)

MARYSVILLE, CALIFORNIA

39°08'N - 121°26'W

BEALE AFB (KBAB)

Amdt 5 20JUL17

HI-ILS or LOC Z RWY 15

SW-2, 30 DEC 2021 to 27 JAN 2022

SW-2, 30 DEC 2021 to 27 JAN 2022