

KUSSO EIGHT DEPARTURE (RNAV)

SC-2, 30 DEC 2021 to 27 JAN 2022

TOP ALTITUDE: ASSIGNED BY ATC

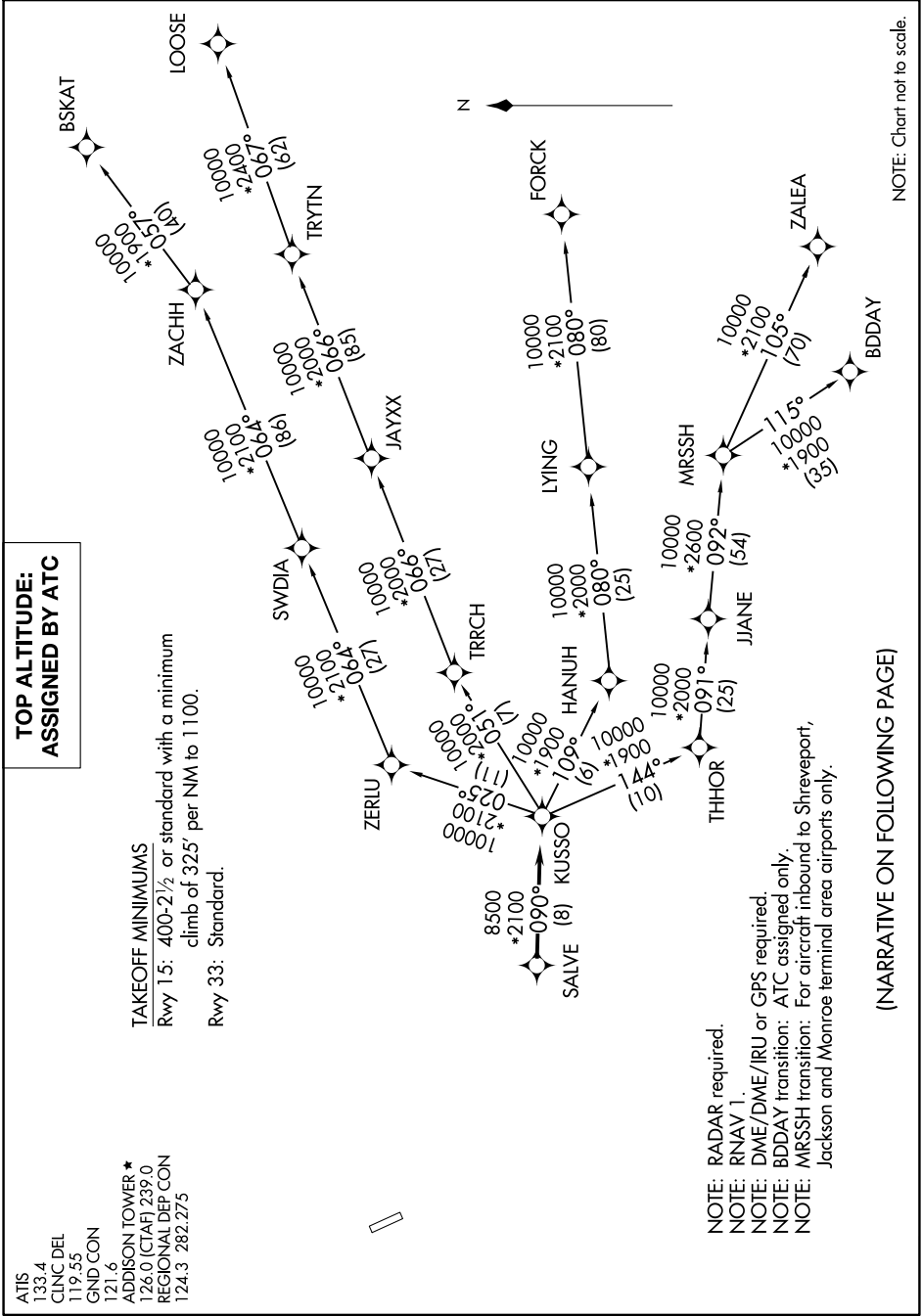
TAKEOFF MINIMUMS

Rwy 15: 400-2½ or standard with a minimum climb of 325' per NM to 1100.
Rwy 33: Standard.

ATIS 133.4
CLNC DEL 119.55
GND CON 121.6
ADISON TOWER * 128.0 (CTAF) 239.0
REGIONAL DEP CON 124.3 282.275

KUSSO EIGHT DEPARTURE (RNAV)

(KUSSO8.KUSSO) 17JUN21



NOTE: RADAR required.
NOTE: RNAV 1.
NOTE: DME/DME/IRU or GPS required.
NOTE: BDDAY transition: ATC assigned only.
NOTE: MRSSH transition: For aircraft inbound to Shreveport, Jackson and Monroe terminal area airports only.

(NARRATIVE ON FOLLOWING PAGE)

NOTE: Chart not to scale.

SC-2, 30 DEC 2021 to 27 JAN 2022