


LOC/DME I-ADS <b>110.1</b> Chan <b>38</b>	APP CRS <b>155°</b>	Rwy Idg <b>6224</b> TDZE <b>643</b> Apt Elev <b>645</b>
---	------------------------	---

# ILS or LOC RWY 15

ADDISON (ADS)

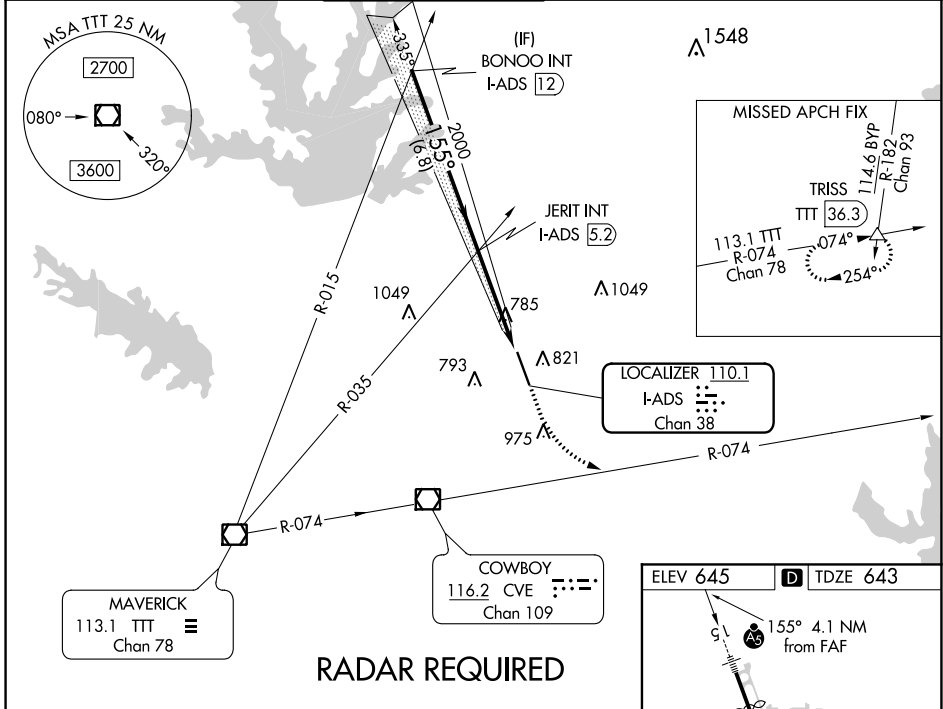
**▽** When local altimeter setting not received, use Dallas Love Fld altimeter setting and increase all DA 39 feet and all MDA 40 feet, increase Circling Cat C visibility ¼ SM. Inoperative table does not apply to S-ILS 15 all Cats, S-LOC 15 Cats A, B & C. For inoperative MALSR, increase S-LOC 15 Cat D visibility to 1¼. Helicopter visibility reduction below 1 SM NA. For inop MALSR when using Dallas Love Fld altimeter setting increase S-LOC Cat C visibility to 1¼ and Cat D visibility to 1½.

**MALSR**



**MISSED APPROACH:** Climb to 1500 then climbing left turn to 3000 via heading 105° and TTT VOR/DME R-074 to TRISS Int/TTT 36.3 DME and hold.

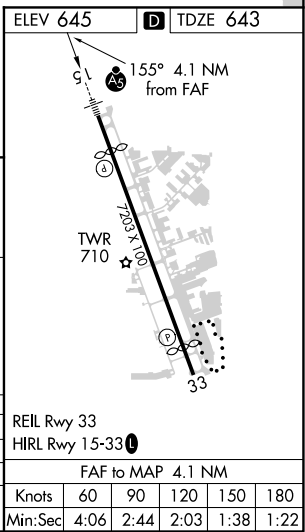
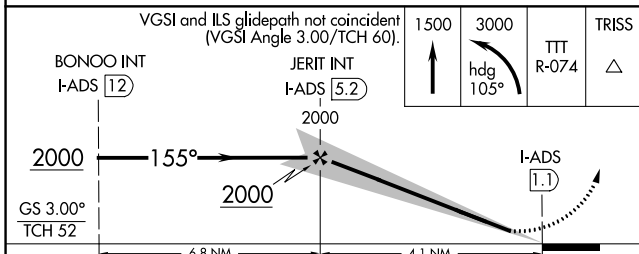
ATIS <b>133.4</b>	REGIONAL APP CON <b>124.3 282.275</b>	ADDISON TOWER* <b>126.0 (CTAF) 0 239.0</b>	GND CON <b>121.6</b>	CLNC DEL <b>119.55</b>	UNICOM <b>122.95</b>
----------------------	--	---	-------------------------	---------------------------	-------------------------



SC-2, 30 DEC 2021 to 27 JAN 2022

SC-2, 30 DEC 2021 to 27 JAN 2022

## RADAR REQUIRED



CATEGORY	A	B	C	D
S-ILS 15		893-1	250 (300-1)	
S-LOC 15		1040-1	397 (400-1)	
<b>C</b> CIRCLING	1200-1	555 (600-1)	1280-1¾ 635 (700-1¾)	1400-2½ 755 (800-2½)