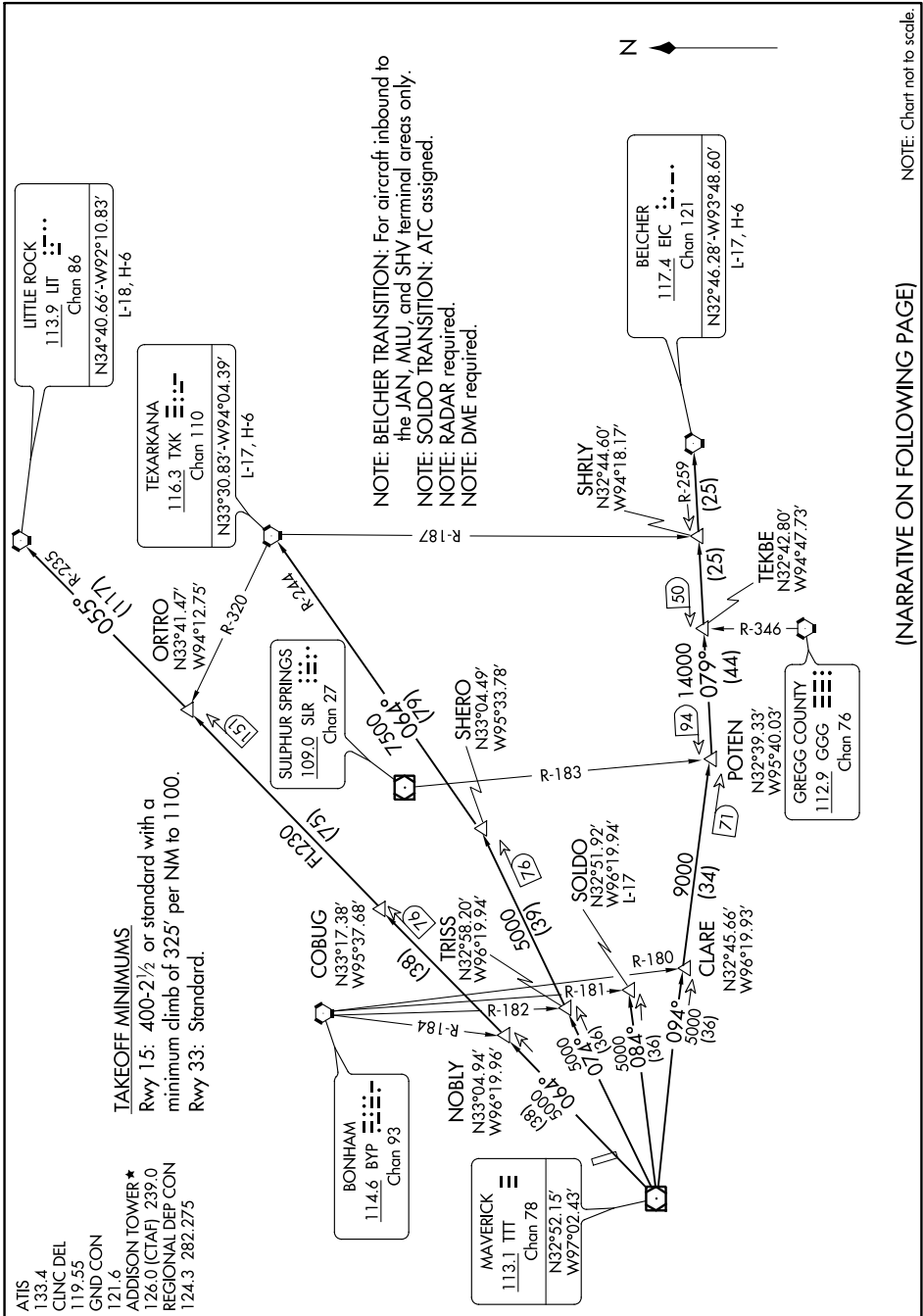


DALLAS EIGHT DEPARTURE

DALLAS, TEXAS

SC-2, 30 DEC 2021 to 27 JAN 2022



(NARRATIVE ON FOLLOWING PAGE)

NOTE: Chart not to scale.

SC-2, 30 DEC 2021 to 27 JAN 2022

DALLAS EIGHT DEPARTURE

DALLAS, TEXAS

TAKEOFF MINIMUMS
 Rwy 15: 400-2½ or standard with a minimum climb of 325', per NM to 1100.
 Rwy 33: Standard.

ADDISON TOWER*
 126.0 (CTAF) 239.0
 REGIONAL DEP CON
 124.3 282.275

MAVERICK	113.1 TTT
Chan 78	
N32°52.15'	W97°02.43'

BONHAM	114.6 BYP
Chan 93	

COBUG	N33°17.38'	W95°37.68'
-------	------------	------------

TRISS	N32°58.20'	W96°19.94'
-------	------------	------------

NOBLY	N33°04.94'	W96°19.96'
-------	------------	------------

SOLDLO	N32°51.92'	W96°19.94'
L-17		

CLARE	N32°45.66'	W96°19.93'
-------	------------	------------

POTEM	N32°39.33'	W95°40.03'
-------	------------	------------

GREGG COUNTY	112.9 GGG
Chan 76	

TEKBE	N32°42.80'	W94°47.73'
-------	------------	------------

SHRLY	N32°44.60'	W94°18.17'
-------	------------	------------

BELCHER	117.4 BIC
Chan 121	
N32°46.28'	W93°48.60'
L-17, H-6	

TEXARKANA	116.3 TKX
Chan 110	
N33°30.83'	W94°04.39'

LITTLE ROCK	113.9 LT
Chan 86	
N34°40.66'	W92°10.83'