

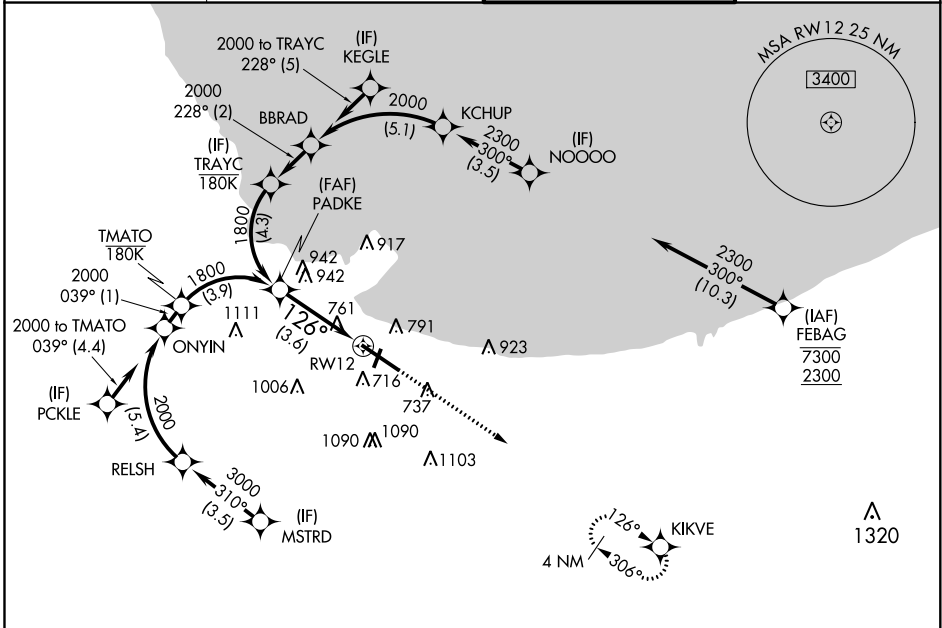
APP CRS	Rwy ldg	7959
126°	TDZE	597
	Apt Elev	597

RNAV (RNP) Z RWY 12

GARY/CHICAGO INTL (GYY)

RNP AR APCH - GPS.	For uncompensated Baro-VNAV systems, procedure NA below -16°C or above 54°C.	MISSED APPROACH: Climb to 2400 direct KIKVE and hold.
--------------------	--	---

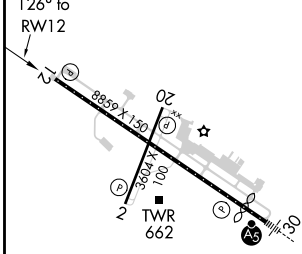
ATIS 134.575	CHICAGO APP CON 133.1 285.6	GARY TOWER * 125.6 (CTAF) 0	GND CON 121.9
------------------------	---------------------------------------	---------------------------------------	-------------------------



EC-2, 30 DEC 2021 to 27 JAN 2022

EC-2, 30 DEC 2021 to 27 JAN 2022

ELEV 597	D	TDZE 597
----------	----------	----------



GP 3.00°	1800	126°	3.6 NM	RW12
TCH 60				

VGSi and RNAV glidepath not coincident (VGSi angle 3.00/TCH 50).		2400	KIKVE
See planview for multiple IF locations.			

CATEGORY	A	B	C	D
RNP 0.10 DA		913-7/8	316 (400-7/8)	
RNP 0.30 DA		1043-1 3/8	446 (500-1 3/8)	

REIL Rwy 2, 12 and 20 **0**
 HIRL Rwy 12-30 **0**
 MIRL Rwy 2-20 **0**

GARY, INDIANA
 Amdt 2 17JUN21

41°37'N-87°25'W

AUTHORIZATION REQUIRED

GARY/CHICAGO INTL (GYY)
RNAV (RNP) Z RWY 12