

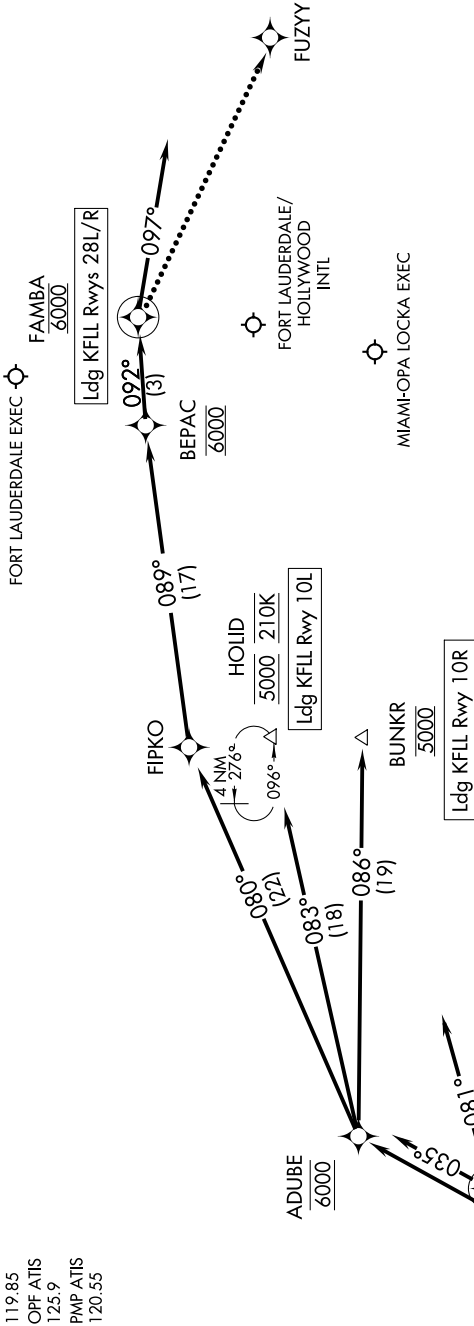
BHHIA ONE ARRIVAL (RNAV) Arrival Routes

FORT LAUDERDALE, FLORIDA

SE-3, 30 DEC 2021 to 27 JAN 2022

RNAV 1-DME/DME/IRU or GPS.  
RADAR required.

MIAMI APP CON  
120.5 350.225  
FIL D-ATIS  
135.0  
FXE ATIS  
119.85  
OPF ATIS  
125.9  
PMP ATIS  
120.55



- NOTE: "descend via" clearance and landing direction (east or west) by ARTCC. For vertical navigation planning, FLL landing east, select Rwy 10R; FLL landing west, select Rwy 28R.
- NOTE: MIA approach will issue landing runway.
- NOTE: Descend via MACH number until intercepting 280K. Maintain 280K until slowed by the STAR or assigned by ATC.
- NOTE: FLL landing east: Expect RADAR vectors after ADUBE.
- NOTE: FLL landing west: Expect RADAR vectors after FAMA.
- NOTE: Landing all satellite airports: Expect RADAR vectors after CEMDI.
- NOTE: Jet aircraft only.



(NARRATIVE ON FOLLOWING PAGE)

NOTE: Chart not to scale.

SE-3, 30 DEC 2021 to 27 JAN 2022