

VORTAC OSH <b>116.75</b> Chan <b>114 (Y)</b>	APP CRS <b>090°</b>	Rwy Idg <b>5648</b> TDZE <b>797</b> Apt Elev <b>808</b>
--	------------------------	---

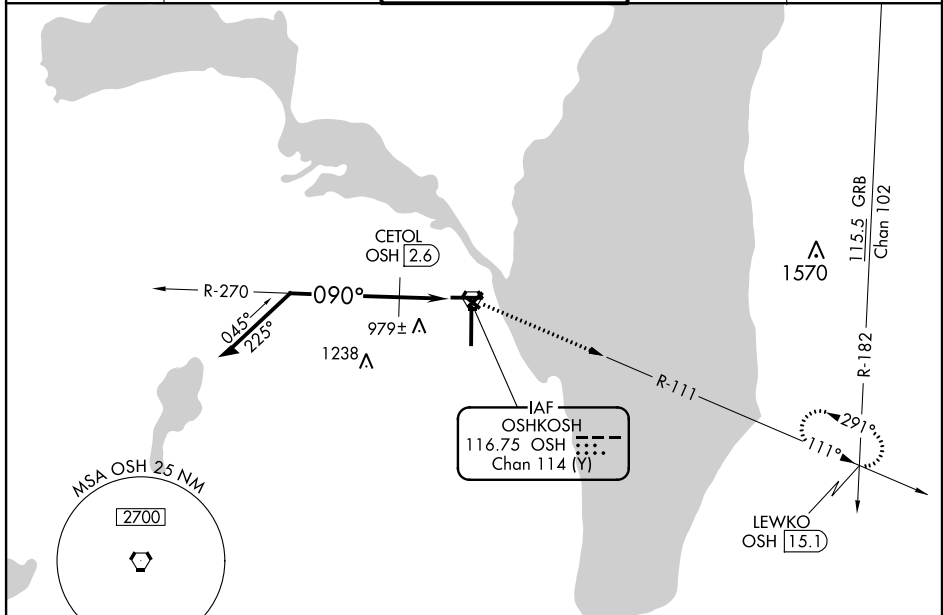
# VOR RWY 9

WITTMAN RGNL (OSH)

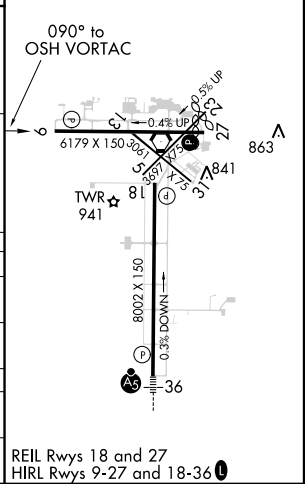
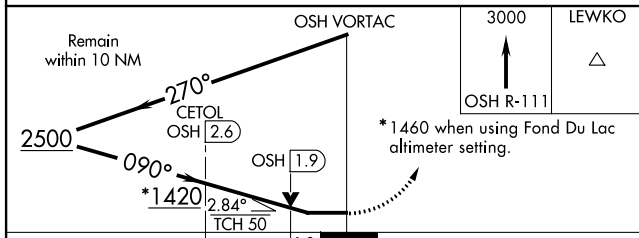
**⚠** Circling to Rwy 5, 23, and 31 NA at night. When local altimeter setting not received, use Fond Du Lac altimeter setting and increase all MDA 40 feet and increase S-9 Cats C and D visibility and Circling Cat C visibility 1/8 mile and Circling Cat D visibility 1/4 mile, increase CETOL fix minimums Circling Cat D visibility 1/4 mile. VDP NA with Fond Du Lac altimeter setting. Helicopter visibility reduction below 3/4 SM NA.

**MISSED APPROACH:** Climb to 3000 on OSH VORTAC R-111 to LEWKO INT/OSH 15.1 DME and hold.

ATIS <b>125.9</b>	MILWAUKEE APP CON <b>127.0 263.075</b>	OSHKOSH TOWER ★ <b>118.5 (CTAF) 290.9</b>	GND CON <b>132.3</b>	UNICOM <b>122.95</b>
----------------------	---	--	-------------------------	-------------------------



ELEV 808	<b>D</b>	TDZE 797
----------	----------	----------



CATEGORY	A	B	C	D
S-9	1420-1	623 (700-1)	1420-1 <sup>3</sup> / <sub>4</sub>	623 (700-1 <sup>3</sup> / <sub>4</sub> )
<b>C</b> CIRCLING	1420-1	612 (700-1)	1420-1 <sup>3</sup> / <sub>4</sub>	1440-2 612 (700-1 <sup>3</sup> / <sub>4</sub> )
CETOL FIX MINIMUMS				
S-9	1240-1	443 (500-1)	1240-1 <sup>3</sup> / <sub>8</sub>	443 (500-1 <sup>3</sup> / <sub>8</sub> )
<b>C</b> CIRCLING	1280-1 472 (500-1)	1300-1 492 (500-1)	1360-1 <sup>1</sup> / <sub>2</sub> 552 (600-1 <sup>1</sup> / <sub>2</sub> )	1440-2 632 (700-2)

EC-3, 30 DEC 2021 to 27 JAN 2022

EC-3, 30 DEC 2021 to 27 JAN 2022