


|                           |                        |                        |
|---------------------------|------------------------|------------------------|
| LOC I-OSH<br><b>110.5</b> | APP CRS<br><b>004°</b> | Rwy Idg<br><b>8002</b> |
|                           |                        | TDZE<br><b>808</b>     |
|                           |                        | Apt Elev<br><b>808</b> |

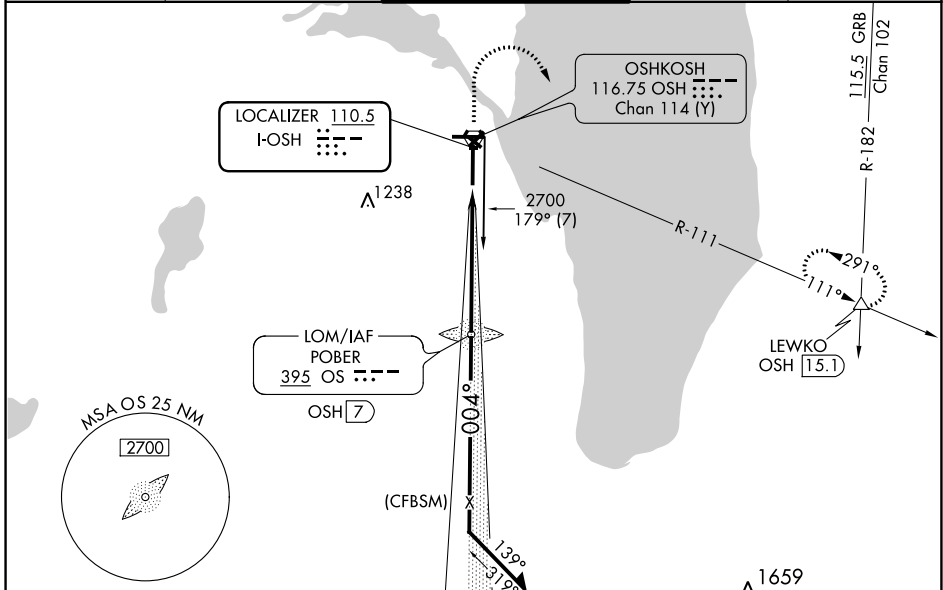
# ILS or LOC RWY 36

WITTMAN RGNL (OSH)

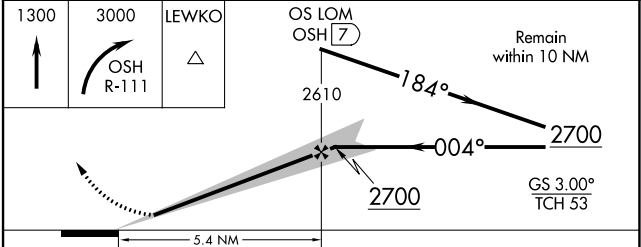
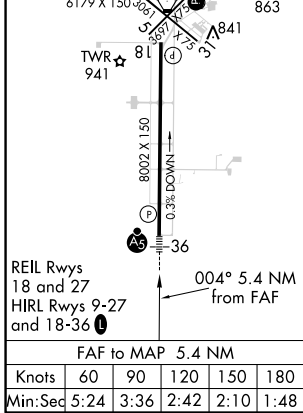
**⚠** When local altimeter setting not received, use Fond Du Lac altimeter setting and increase DA 31 feet and all MDA 40 feet; increase S-LOC 36 Cat C/D and Circling Cat C/D visibilities ¼ mile. For inop MALSRL when using Fond Du Lac altimeter setting, increase S-LOC 36 Cat C/D visibility to 1½ mile. Circling to Rwy 5, 23, and 31 NA at night.  
**\*** RVR 1800 authorized with the use of FD or AP or HUD to DA, NA when using Fond Du Lac altimeter setting.

**MALSRL**  
  
**MISSED APPROACH:** Climb to 1300 then climbing right turn to 3000 on OSH R-111 to LEWKO INT/OSH 15 DME and hold.

|                      |   |  |                         |                         |
|----------------------|---|--|-------------------------|-------------------------|
| ATIS<br><b>125.9</b> | MILWAUKEE APP CON<br><b>127.0 263.075</b> | OSHKOSH TOWER ★<br><b>118.5 (CTAF) 290.9</b> | GND CON<br><b>132.3</b> | UNICOM<br><b>122.95</b> |
|----------------------|---|--|-------------------------|-------------------------|



|                 |                 |
|-----------------|-----------------|
| ELEV <b>808</b> | TDZE <b>808</b> |
|-----------------|-----------------|



| CATEGORY          | A                   | B           | C                      | D                     |
|-------------------|---------------------|-------------|------------------------|-----------------------|
| S-ILS 36 *        | 1008/24 200 (200-½) |             |                        |                       |
| S-LOC 36          | 1340/24             | 532 (600-½) | 1340/55                | 532 (600-1)           |
| <b>C</b> CIRCLING | 1340-1              | 532 (600-1) | 1360-1½<br>552 (600-½) | 1440-2<br>632 (700-2) |

EC-3, 30 DEC 2021 to 27 JAN 2022

EC-3, 30 DEC 2021 to 27 JAN 2022