

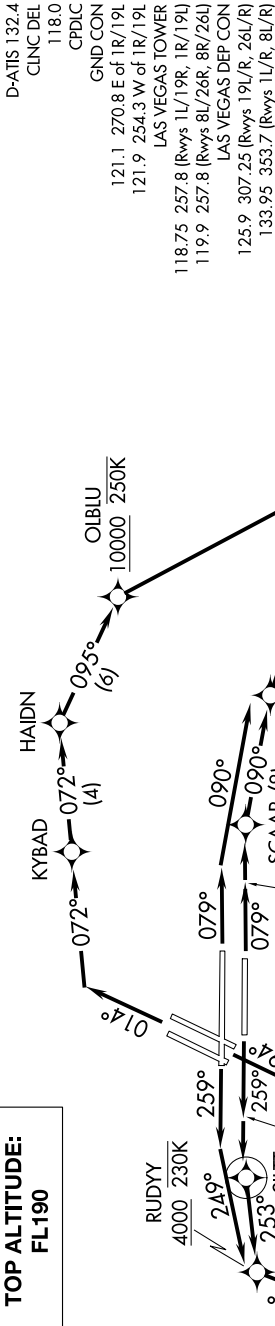
RASLR TWO DEPARTURE (RNAV)

AL-662 (FAA)

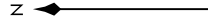
HARRY REID INTL (LAS)
LAS VEGAS, NEVADA

SW-4, 30 DEC 2021 to 27 JAN 2022

TOP ALTITUDE:
FL190



NOTE: DME/DME/IRU or GPS required.
 NOTE: RNAV 1.
 NOTE: RADAR required for non-GPS equipped aircraft.
 NOTE: Turbojet only.



TAKEOFF MINIMUMS
 Rwy 1L/R: Standard with minimum climb of 500' per NM to 2682, then minimum climb of 280' per NM to 4800.
 Rwy 8L/R: Standard with minimum climb of 500' per NM to 2682.
 Rwy 19L: Standard with minimum climb of 500' per NM to 2682, then minimum climb of 255' per NM to 4400.
 Rwy 19R: Standard with minimum climb of 500' per NM to 2682, then minimum climb of 255' per NM to 4300.
 Rwy 26L: Standard with minimum climb of 500' per NM to 2682, then minimum climb of 230' per NM to 4700.
 Rwy 26R: Standard with minimum climb of 500' per NM to 2682, then minimum climb of 235' per NM to 4700.

(NARRATIVE ON FOLLOWING PAGE)

NOTE: Chart not to scale.

SW-4, 30 DEC 2021 to 27 JAN 2022

RASLR TWO DEPARTURE (RNAV)