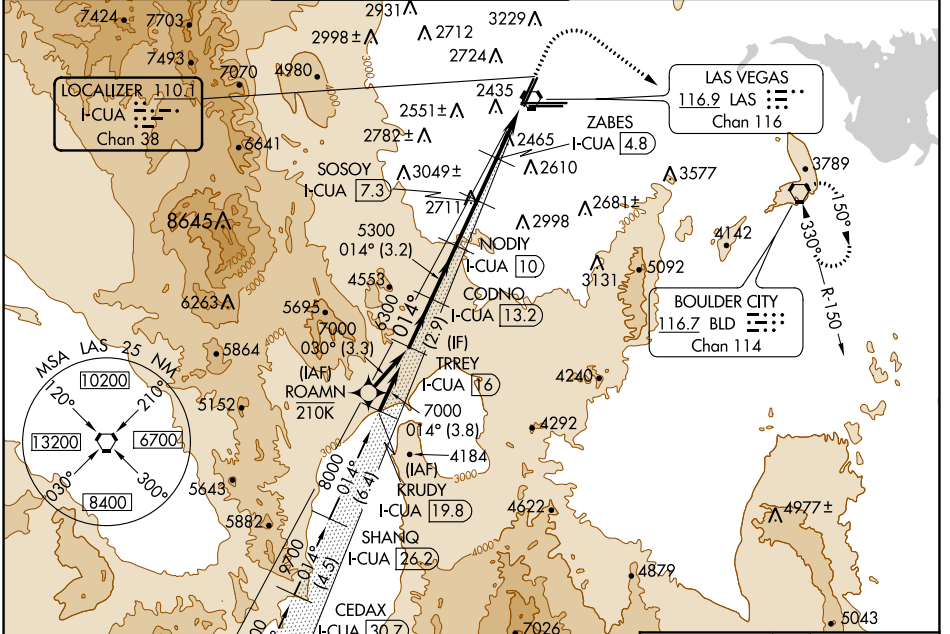


LOC/DME I- CUA 110.1 Chan 38	APP CRS 014°	Rwy Idg TDZE Apt Elev	8401 2176 2181
---	------------------------	-----------------------------	---

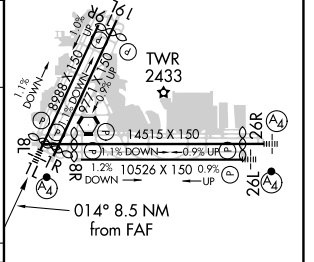
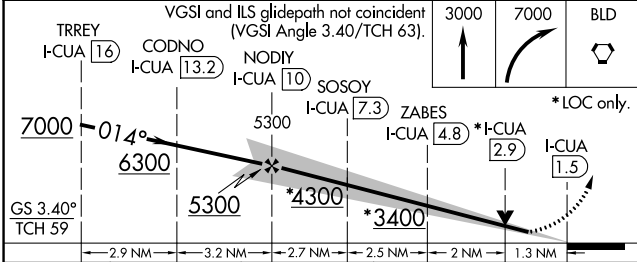
ILS or LOC RWY 1L

HARRY REID INTL (LAS)

DME required. From ROAMN: RNP APCH-GPS required.		MALSF	MISSED APPROACH: Climb to 3000 then climbing right turn to 7000 direct BLD VORTAC and hold, continue climb-in-hold to 7000.	
<p>▼ Rwy 1L helicopter visibility reduction below 3/4 SM NA. ▲ For inop ALS, increase S-ILS 1L all Cats visibility to 7/8 SM.</p>				
D-ATIS 132.4	LAS VEGAS APP CON 125.025 379.15 (West) 125.6 282.2 (East)	LAS VEGAS TOWER 118.75 257.8 (Rwy 1L/19R, 1R/19L) 119.9 257.8 (Rwy 8L/26R, 8R/26L)		GND CON 121.1 270.8 E of 1R/19L 121.9 254.3 W of 1R/19L
				CLNC DEL 118.0
				CPDLC



ELEV 2181	TDZE 2176
-----------	-----------



CATEGORY	A	B	C	D
S-ILS 1L	2460-3/4 284 (300-3/4)			
S-LOC 1L	2720-3/4	544 (600-3/4)	2720-1 3/8	544 (600-1 3/8)
CIRCLING	3020-1 1/4 839 (900-1 1/4)	3060-1 1/4 879 (900-1 1/4)	3100-2 3/4 919 (1000-2 3/4)	3540-3 1359 (1400-3)

MIRL Rwy 1R-19L
REIL Rws 1R, 8R, 19L and 19R
HIRL Rws 11-19R, 8L-26R and 8R-26L

SW-4, 30 DEC 2021 to 27 JAN 2022

SW-4, 30 DEC 2021 to 27 JAN 2022