

VOR/DME MBS <b>112.9</b> Chan 76	APP CRS <b>131°</b>	Rwy Idg TDZE Apt Elev <b>6399</b> <b>668</b> <b>668</b>
--	------------------------	--

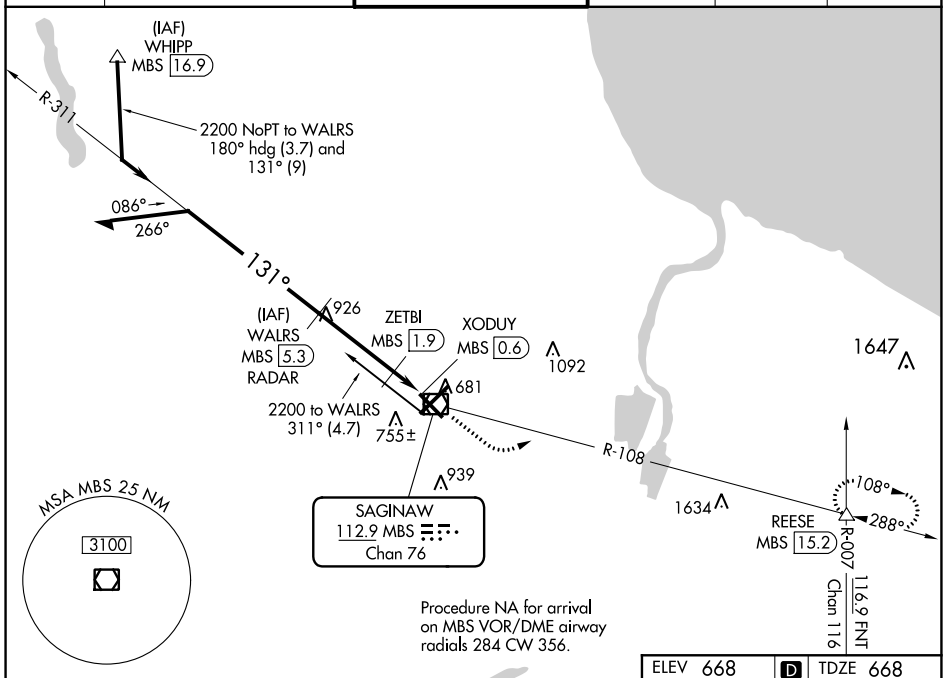
# VOR RWY 14

MBS INTL (MBS)

**⚠** DME or RADAR required.

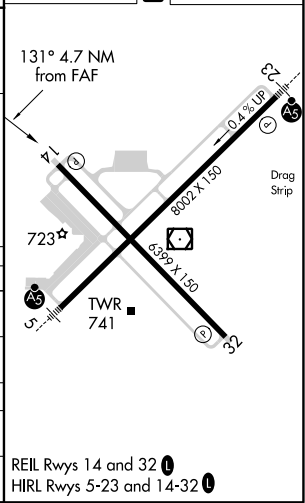
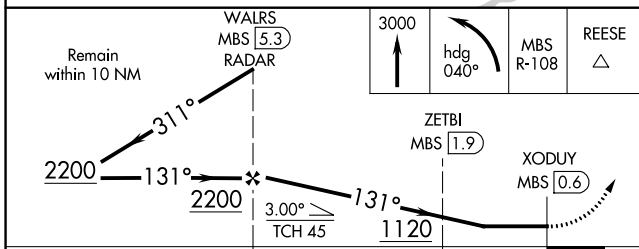
**MISSED APPROACH:** Climb to 3000 then left turn on heading 040° and MBS R-108 to REESE INT/15.2 DME and hold.

ATIS <b>125.925</b>	GREAT LAKES APP CON* <b>126.45 235.625</b>	SAGINAW TOWER* <b>120.1(CTAF) 0 257.7</b>	GND CON <b>121.7</b>	CLNC DEL <b>121.85</b>	UNICOM <b>122.95</b>
------------------------	---	--	-------------------------	---------------------------	-------------------------



Procedure NA for arrival on MBS VOR/DME airway radials 284 CW 356.

ELEV 668	<b>D</b> TDZE 668
----------	-------------------



CATEGORY	A	B	C	D
S-14	1120-1	452 (500-1)	1120-1 $\frac{3}{8}$	452 (500-1 $\frac{3}{8}$ )
<b>C</b> CIRCLING	1120-1	452 (500-1)	1240-1 $\frac{1}{2}$ 572 (600-1 $\frac{1}{2}$ )	1240-2 572 (600-2)
ZETBI FIX MINIMUMS (DME REQUIRED)				
S-14	1040-1	372 (400-1)	1040-1 $\frac{3}{8}$	372 (400-1 $\frac{3}{8}$ )
<b>C</b> CIRCLING	1080-1 412 (500-1)	1120-1 452 (500-1)	1240-1 $\frac{1}{2}$ 572 (600-1 $\frac{1}{2}$ )	1240-2 572 (600-2)

REIL Rwy 14 and 32 **Ⓛ**  
HIRL Rwy 5-23 and 14-32 **Ⓛ**

EC-1, 30 DEC 2021 to 27 JAN 2022

EC-1, 30 DEC 2021 to 27 JAN 2022