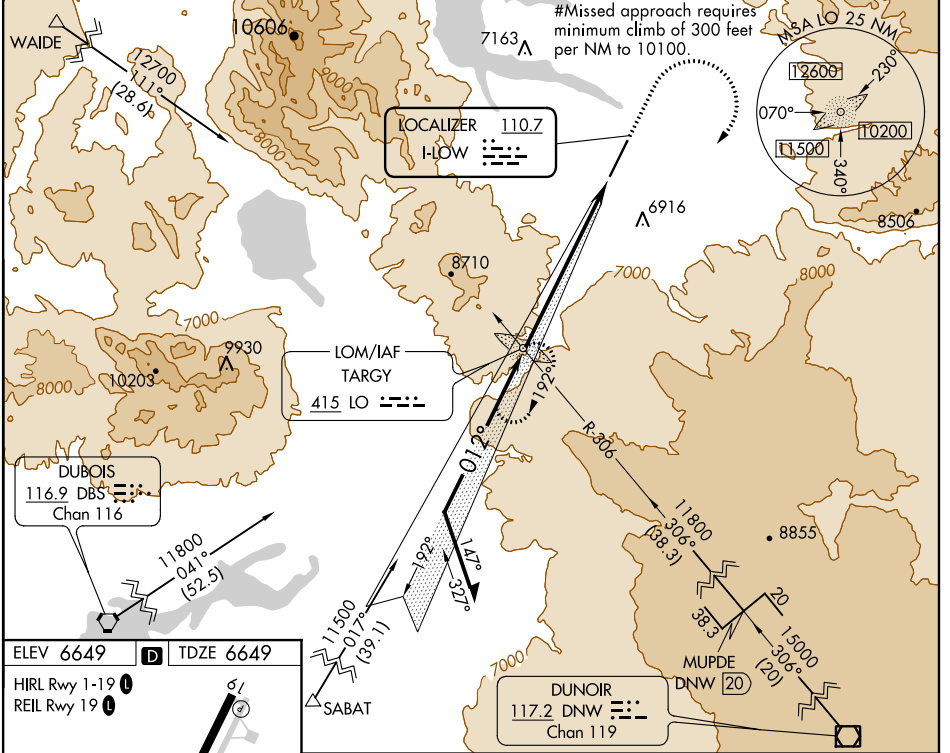


LOC I-LOW 110.7	APP CRS 012°	Rwy Idg 8400	TDZE 6649
		Apt Elev 6649	

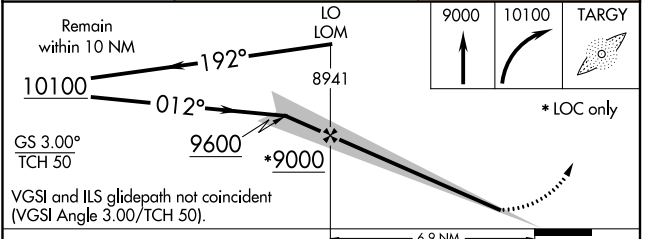
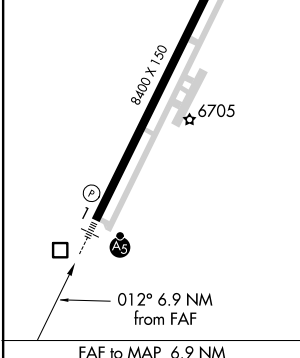
ILS or LOC RWY 1 YELLOWSTONE (WYS)

ADF required. DME required for MUPDE stepdown fix.		MALSR	MISSED APPROACH: Climb to 9000, then climbing right turn to 10100 direct TARGY LOM and hold.
<p>▼ Obtain local altimeter setting on CTAF, when not received procedure</p> <p>▲ NA NA. Inoperative table does not apply to S-LOC 1 Cat A. For inoperative MALSR, increase S-ILS 1 all Cats visibility to 2 3/4 mile.</p>			

AWOS-3P 118.1	SALT LAKE CENTER 132.4 338.3	UNICOM 123.0 (CTAF) 0
-------------------------	--	---------------------------------



ELEV 6649	D	TDZE 6649
HIRL Rwy 1-19		
REIL Rwy 19		



	CATEGORY A		CATEGORY B		CATEGORY C		CATEGORY D
S-ILS 1#			6849-1/2		200 (200-1/2)		
S-ILS 1			7449-2 1/4		800 (800-2 1/4)		
S-LOC 1	7780-1 1/4 1131 (1200-1 1/4)	7780-1 1131 (1200-1)	7780-2 1/2	1131 (1200-2 1/2)			
C CIRCLING	7780-1 1/4 1131 (1200-1 1/4)	7780-1 1/2 1131 (1200-1 1/2)	7780-3 1131 (1200-3)	8020-3 1371 (1400-3)			

NW-1, 30 DEC 2021 to 27 JAN 2022

NW-1, 30 DEC 2021 to 27 JAN 2022