

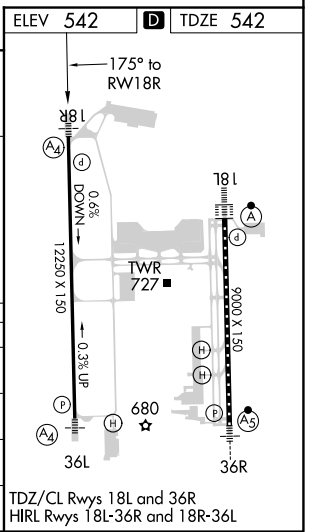
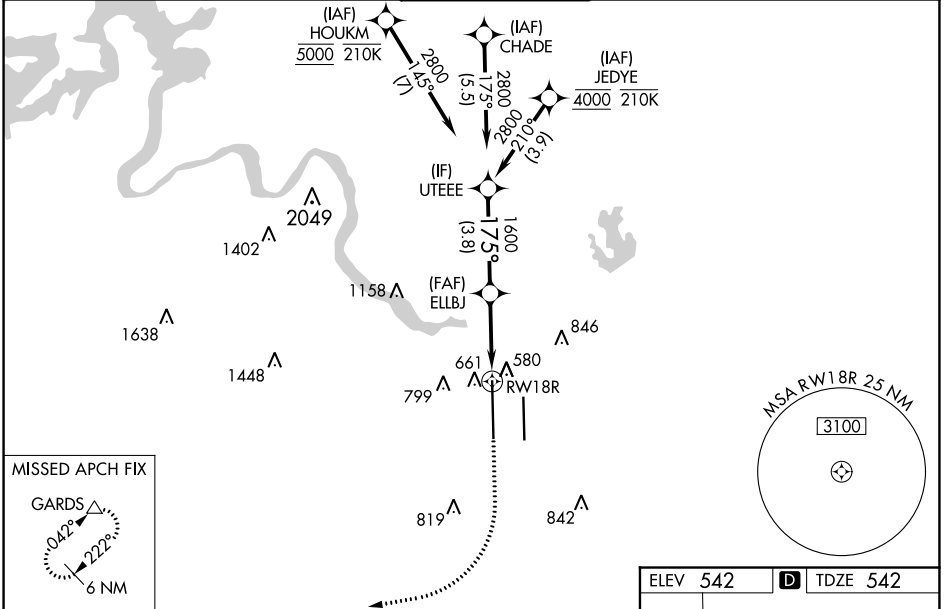
WAAS CH <b>77530</b> <b>W18B</b>	APP CRS <b>175°</b>	Rwy Idg <b>12250</b> TDZE <b>542</b> Apt Elev <b>542</b>
--	------------------------	--

# RNAV (GPS) Y RWY 18R

AUSTIN-BERGSTROM INTL (AUS)

RNP APCH-GPS.		MALS	MISSED APPROACH: Climb to 1000 then climbing right turn to 3500 direct GARDS and hold.
<p>Simultaneous approach authorized. LNAV procedure NA during simultaneous operations. Use of FD or AP required during simultaneous operations. Inop table does not apply to LPV. For uncompensated Baro-VNAV systems, LNAV/VNAV NA below -5°C or above 54°C. For inop ALS, increase LNAV/VNAV all Cats visibility to RVR 4500; increase LNAV Cat E visibility to RVR 5500.</p>		(A4) =	

D-ATIS <b>124.4</b>	AUSTIN APP CON <b>127.225 317.65</b> (EAST) <b>120.875 270.25</b> (SOUTH) <b>119.0 370.85</b> (WEST)	AUSTIN TOWER <b>121.0 281.5</b>	GND CON <b>121.9 348.6</b>	CLNC DEL <b>125.5 263.0</b>	CPDLC
------------------------	---	------------------------------------	-------------------------------	--------------------------------	-------



GP 3.00° TCH 59	3.8 NM	2.2 NM	0.9 NM		
CATEGORY	A	B	C	D	E
LPV DA		742/40	200 (200-¾)		
LNAV/VNAV DA		834/40	292 (300-¾)		
LNAV MDA		900/40	358 (400-¾)		
CIRCLING	1040-1 498 (500-1)	1100-1 558 (600-1)	1200-1¼ 658 (700-1¼)	1200-2 658 (700-2)	1520-3 978 (1000-3)

SC-3, 30 DEC 2021 to 27 JAN 2022

SC-3, 30 DEC 2021 to 27 JAN 2022