

| | | |
|---|------------------------|---|
| LOC/DME I-VNKG 110.5 Chan 42 | APP CRS 175° | Rwy Idg 9000 TDZE 492 Apt Elev 542 |
|---|------------------------|---|

ILS or LOC RWY 18L

AUSTIN-BERGSTROM INTL (AUS)

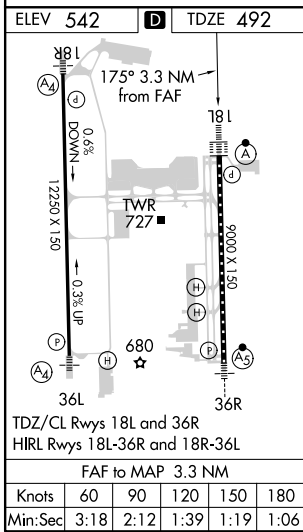
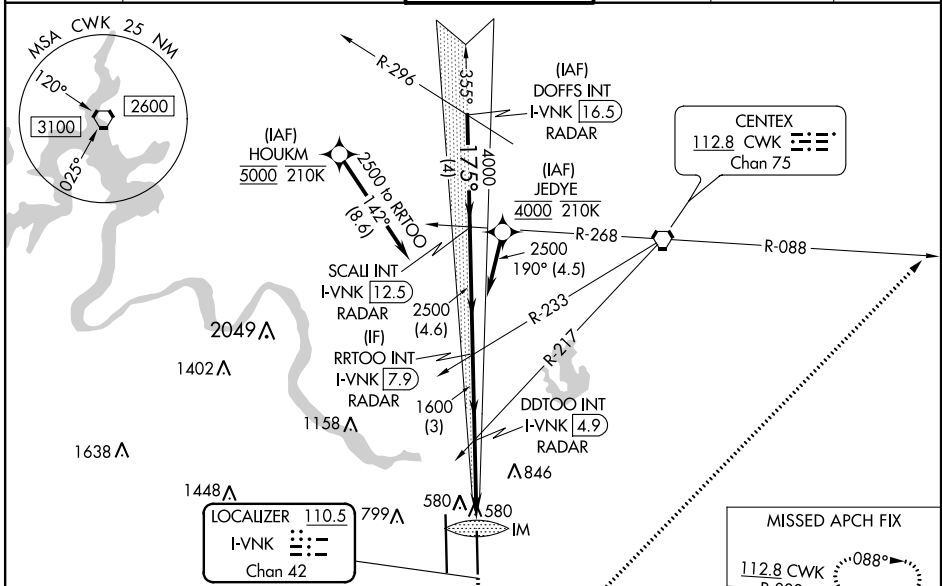
RNAV 1-GPS or RADAR required for procedure entry. DME required. From HOUKM, JEDYE: RNAV 1-GPS required.

Simultaneous approach authorized. For inop ALS, increase S-ILS-18L Cat E visibility to RVR 4000, and S-LOC 18L Cats C, D, and E visibility to RVR 5500.



MISSED APPROACH: Climb to 1000, then climbing left turn to 3000 on heading 040° and CWK VORTAC R-088 to HOOKK/CWK 17 DME and hold.

| | | | | | |
|------------------------|---|------------------------------------|-------------------------------|--------------------------------|-------|
| D-ATIS 124.4 | AUSTIN APP CON 127.225 317.65 (EAST) 120.875 270.25 (SOUTH) 119.0 370.85 (WEST) | AUSTIN TOWER 121.0 281.5 | GND CON 121.9 348.6 | CLNC DEL 125.5 263.0 | CPDLC |
|------------------------|---|------------------------------------|-------------------------------|--------------------------------|-------|



VGSI and ILS glidepath not coincident (VGSI Angle 3.00/TCH 74).

| | | | | | |
|-----------------------------|-----------------------------|------------------------|-------------------------|-----------------------|------------------------|
| DOFFS INT I-VNKG 16.5 RADAR | SCALI INT I-VNKG 12.5 RADAR | RRTOO I-VNKG 7.9 RADAR | DDTOO I-VNKG 4.9 RADAR | I-VNKG 2.5 | I-VNKG 1.6 |
| 5000 | 4000 | 2500 | 1600 | 1600 | 0.8 0.1 |
| GS 3.00° TCH 61 | | | | | |
| 4 NM | | 4.6 NM | | 3 NM | |
| 2.4 NM | | 0.8 NM | | 0.1 NM | |
| CATEGORY | A | B | C | D | E |
| S-ILS 18L | 692/18 200 (200-½) | | | | |
| S-LOC 18L | 840/24 | 348 (300-½) | 840/30 | 348 (300-¾) | |
| CIRCLING | 1040-1 498 (500-1) | 1100-1 558 (600-1) | 1200-1¾ 658 (700-1¾) | 1200-2 658 (700-2) | 1520-3 978 (1000-3) |

SC-3, 30 DEC 2021 to 27 JAN 2022

SC-3, 30 DEC 2021 to 27 JAN 2022