

VORTAC TRM 116.2 Chan 109	APP CRS 316°	Rwy Idg TDZE Apt Elev	4995 -121 -115
-----------------------------------------------	------------------------	-----------------------------	-------------------------------------------

VOR RWY 30

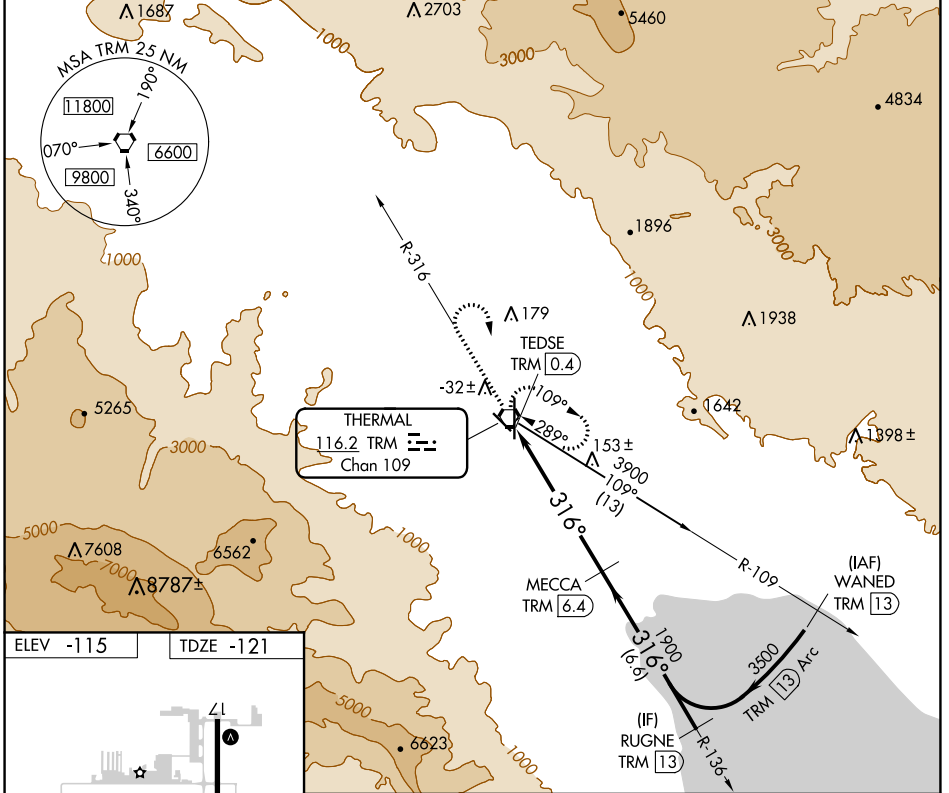
JACQUELINE COCHRAN RGNL (TRM)

DME required.

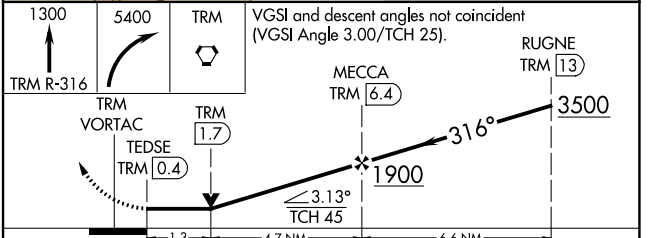
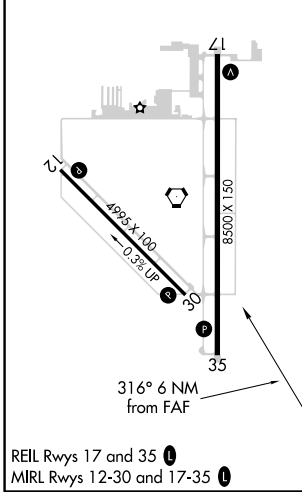
▼ Rwy 30 helicopter visibility reduction below ¾ SM NA.

MISSED APPROACH: Climb to 1300 on TRM VORTAC R-316 then climbing right turn to 5400 direct TRM VORTAC and hold, continue climb-in-hold to 5400.

ASOS 118.325	SOCAL APP CON 135.275 251.1	CLNC DEL 120.225	UNICOM 123.0 (CTAF) 0
------------------------	---------------------------------------	----------------------------	---------------------------------



ELEV -115	TDZE -121
-----------	-----------



CATEGORY	A	B	C	D
S-30	300-1	421 (500-1)	300-1¼	421 (500-1¼)
CIRCLING	320-1 435 (500-1)	340-1 455 (500-1)	460-1½ 575 (600-1½)	780-3 895 (900-3)

SW-3, 30 DEC 2021 to 27 JAN 2022

SW-3, 30 DEC 2021 to 27 JAN 2022