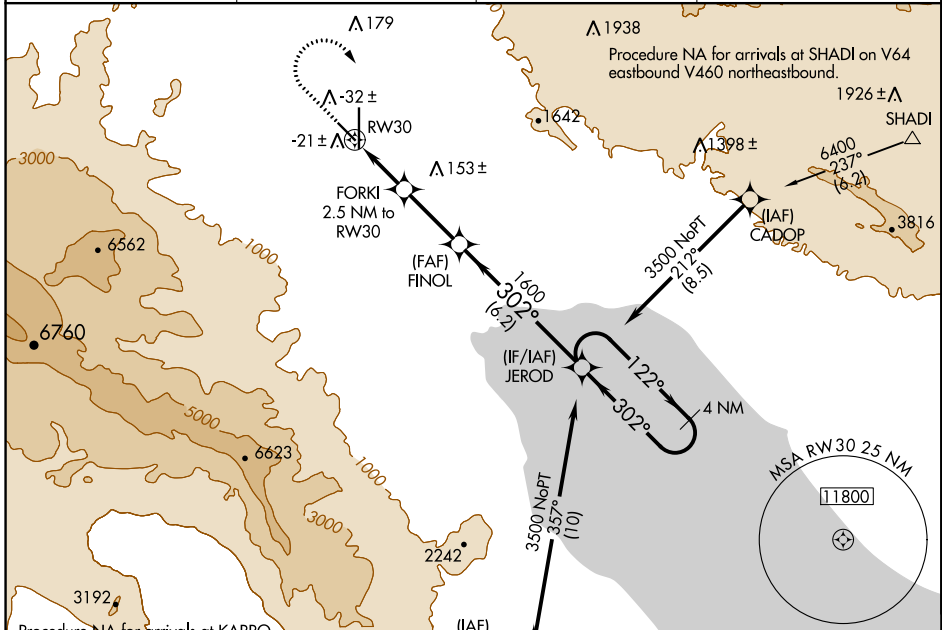


WAAS CH 77941 W30A	APP CRS 302°	Rwy Idg TDZE Apt Elev	4995 -121 -115
--	------------------------	-----------------------------	---

RNAV (GPS) RWY 30

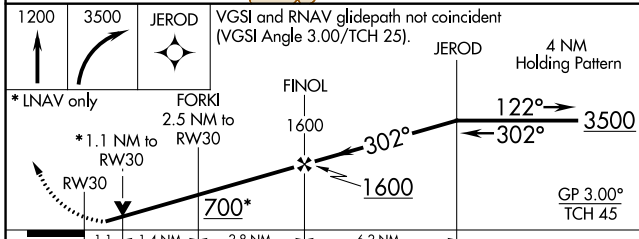
JACQUELINE COCHRAN RGNL (TRM)

RNP APCH.		MISSED APPROACH: (Do not exceed 230K until JEROD) Climb to 1200 then climbing right turn to 3500 direct JEROD and hold.	
▼ ▲ Rwy 30 helicopter visibility reduction below 3/4 SM NA.			
ASOS 118.325	SOCAL APP CON 135.275 251.1	CLNC DEL 120.225	UNICOM 123.0 (CTAF) 0

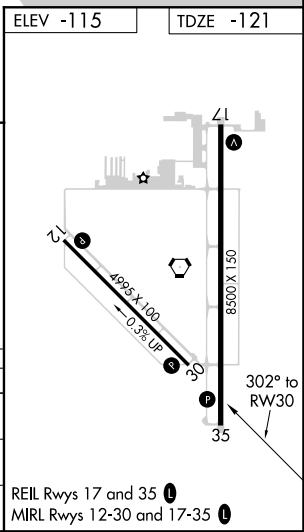


Procedure NA for arrivals at SHADI on V64 eastbound V460 northeastbound.

Procedure NA for arrivals at KARRO on V460 southwestbound.



ELEV -115	TDZE -121			
1200	3500	JEROD	VGSI and RNAV glidepath not coincident (VGSI Angle 3.00/TCH 25).	
* LNAV only		FORKI 2.5 NM to RW30	JEROD 4 NM Holding Pattern	
* 1.1 NM to RW30		FINOL 1600	JEROD 4 NM Holding Pattern	
RW30		122°	3500	
700*		302°	GP 3.00° TCH 45	
CATEGORY	A	B	C	D
LPV DA	129-3/4 250 (300-3/4)			
LNAV MDA	260-1 381 (400-1)		260-1 1/8 381 (400-1 1/8)	
CIRCLING	320-1 435 (500-1)	340-1 455 (500-1)	460-1 1/2 575 (600-1 1/2)	780-3 895 (900-3)



REIL Rwy 17 and 35 0
MIRL Rwy 12-30 and 17-35 0

SW-3, 30 DEC 2021 to 27 JAN 2022

SW-3, 30 DEC 2021 to 27 JAN 2022