

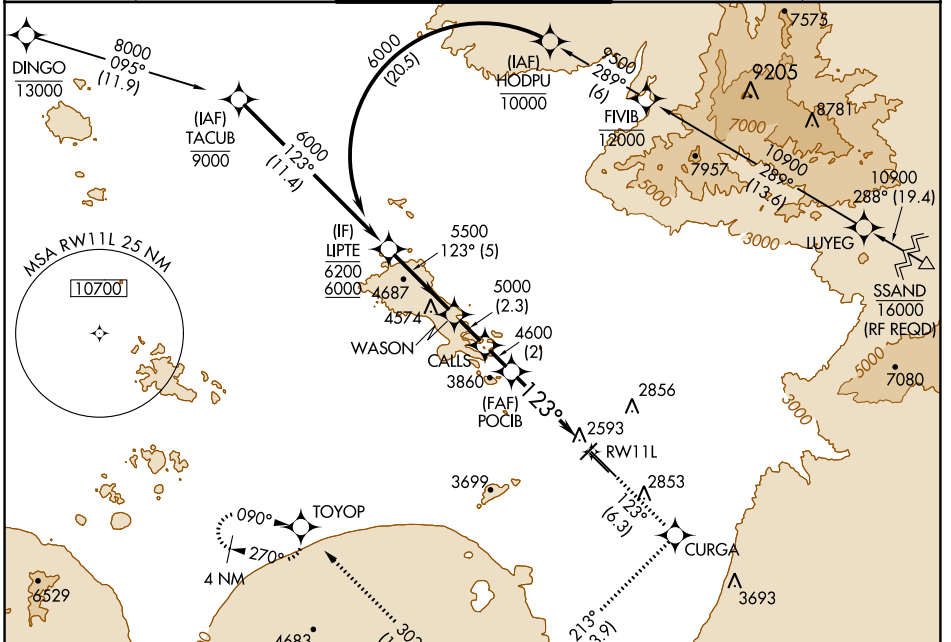
RNAV (RNP) Y RWY 11L

TUCSON INTL (TUS)

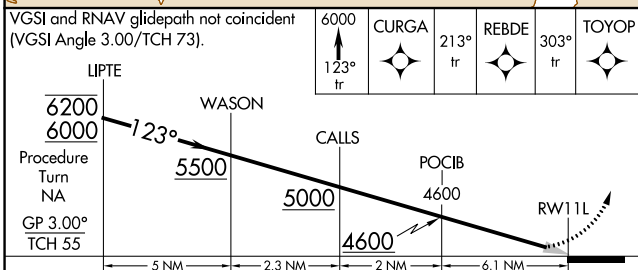
APP CRS	Rwy Idg	10996
123°	TDZE	2599
	Apt Elev	2643

RNP AR APCH.	MALSR	MISSED APPROACH: Climb to 6000 via 123° track to CURGA, 213° track to REBDE, 303° track to TOYOP and hold.
<p>▼ For uncompensated Baro-VNAV systems, procedure NA below -3°C or above 52°C. For inoperative MALSR, increase RNP 0.30 visibility to RVR 6000 all Cats. GPS required.</p> <p>▲ NA</p>		

ATIS	TUCSON APP CON	TUCSON TOWER	GND CON	CLNC DEL
123.8 279.65	119.4 318.1	118.3 257.8	124.4 348.6	126.65 326.2

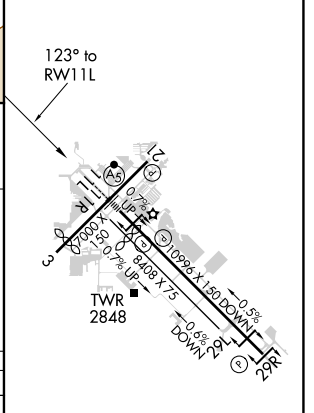


VGSI and RNAV glidepath not coincident (VGSI Angle 3.00/TCH 73).	6000	CURGA	213° tr	REBDE	303° tr	TOYOP
--	------	-------	---------	-------	---------	-------



CATEGORY	A	B	C	D
RNP 0.30 DA	2947/40 348 (400-¾)			

ELEV 2643	D TDZE 2599
-----------	--------------------



HIRL Rwy 11L-29L
MIRL Rwy 3-21 and 11R-29L
REIL Rwy 21, 29L and 29R

SW-4, 30 DEC 2021 to 27 JAN 2022

SW-4, 30 DEC 2021 to 27 JAN 2022

AUTHORIZATION REQUIRED