

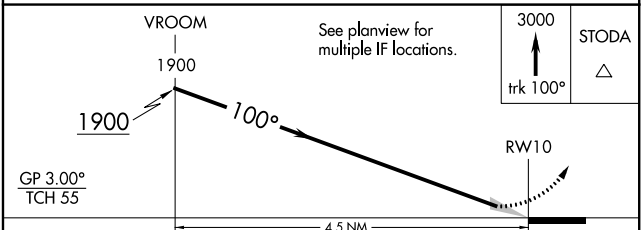
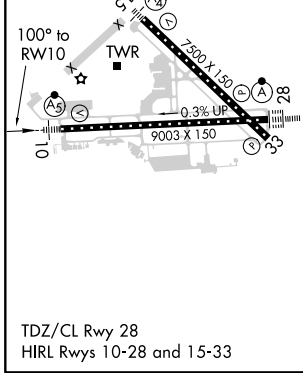
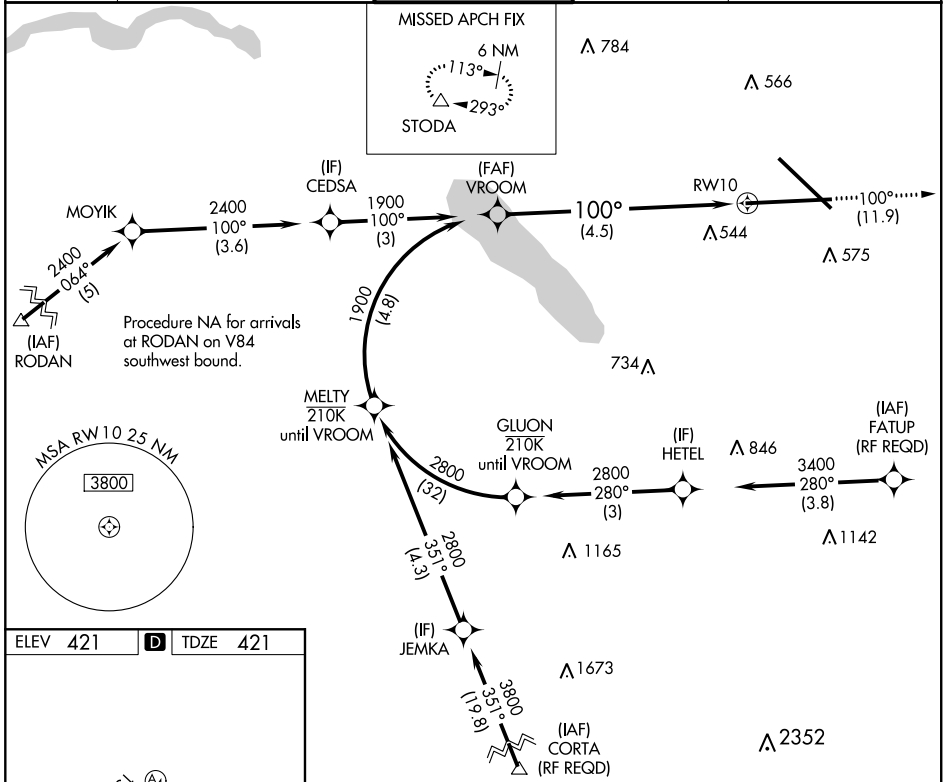
APP CRS	Rwy Idg	<b>9003</b>
<b>100°</b>	TDZE	<b>421</b>
	Apt Elev	<b>421</b>

# RNAV (RNP) Y RWY 10

SYRACUSE HANCOCK INTL (SYR)

RNP AR APCH.	MALSR	MISSED APPROACH:
<p>▼ For uncompensated Baro-VNAV systems, procedure NA below -18°C or above 54°C. For inop ALS, increase RNP 0.15 all Cats visibility to 1½. For inop ALS, increase RNP 0.30 all Cats visibility to 1¾.</p>		<p>Climb to 3000 on track 100° to STODA and hold.</p>

ATIS	SYRACUSE APP CON	SYRACUSE TOWER	GND CON	CLNC DEL
<b>124.225</b>	<b>126.125 269.125</b>	<b>120.3 239.0</b>	<b>121.7 348.6</b>	<b>125.05 257.775</b>



CATEGORY	A	B	C	D
RNP 0.15 DA		816/45	395 (400-¾)	
RNP 0.30 DA		881/55	460 (500-1)	

**AUTHORIZATION REQUIRED**

NE-2, 30 DEC 2021 to 27 JAN 2022

NE-2, 30 DEC 2021 to 27 JAN 2022