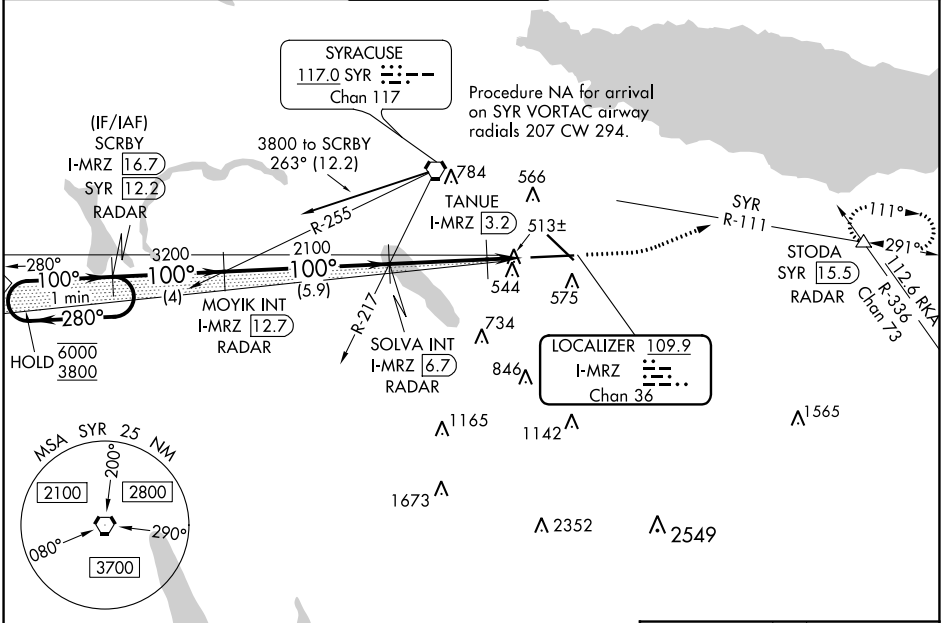


LOC/DME I-MRZ 109.9 Chan 36	APP CRS 100°	Rwy ldg TDZE Apt Elev 9003 421 421
--	------------------------	--

ILS or LOC RWY 10
SYRACUSE HANCOCK INTL (SYR)

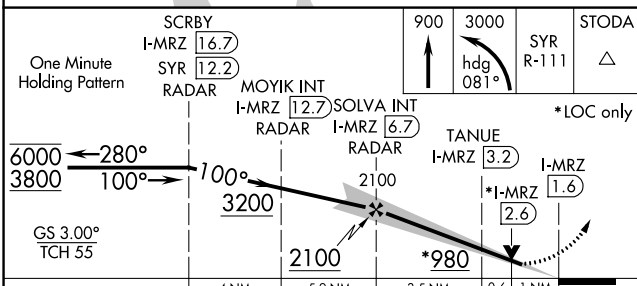
DME or RADAR required.		MALSR 	MISSED APPROACH: Climb to 900 then climbing left turn to 3000 on heading 081° and on SYR VORTAC R-111 to STODA INT/ SYR VORTAC 15.5 DME/RADAR and hold.	
▼ TANUE fix minimums, for inoperative ALS, increase S-LOC 10 ▲ Cats C and D visibility to RVR 5500. **RVR 1800 authorized with use of FD or AP or HUD to DA.				

ATIS 124.225	SYRACUSE APP CON 126.125 269.125	SYRACUSE TOWER 120.3 239.0	GND CON 121.7 348.6	CLNC DEL 125.05 257.775
------------------------	--	--------------------------------------	-------------------------------	-----------------------------------

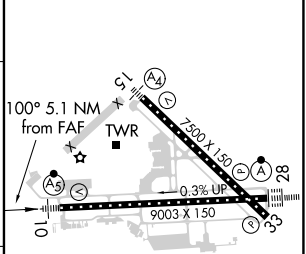


NE-2, 30 DEC 2021 to 27 JAN 2022

NE-2, 30 DEC 2021 to 27 JAN 2022



ELEV 421	D TDZE 421
----------	-------------------



CATEGORY	A	B	C	D
S-ILS 10**	621/24 200 (200-1/2)			
S-LOC 10	980/24 559 (600-1/2)		980/60 559 (600-1 1/4)	
C CIRCLING	980-1 559 (600-1)		1020-1 5/8 1180-2 1/2 599 (600-1 5/8) 759 (800-2 1/2)	
TANUE FIX MINIMUMS (DME REQUIRED)				
S-LOC 10	780/24 359 (400-1/2)		780/30 359 (400-3/4)	
C CIRCLING	900-1 479 (500-1) 920-1 499 (500-1)		1020-1 1/2 599 (600-1 1/2) 1180-2 1/2 759 (800-2 1/2)	

TDZ/CL Rwy 28	
HIRL Rwy 10-28 and 15-33	
FAF to MAP 5.1 NM	
Knots	60 90 120 150 180
Min:Sec	5:06 3:24 2:33 2:02 1:42