


LOC/DME I-BFI 110.9 Chan 46	APP CRS 135°	Rwy Idg TDZE Apt Elev	9120 18 22
--	------------------------	-----------------------------	---------------------------------------

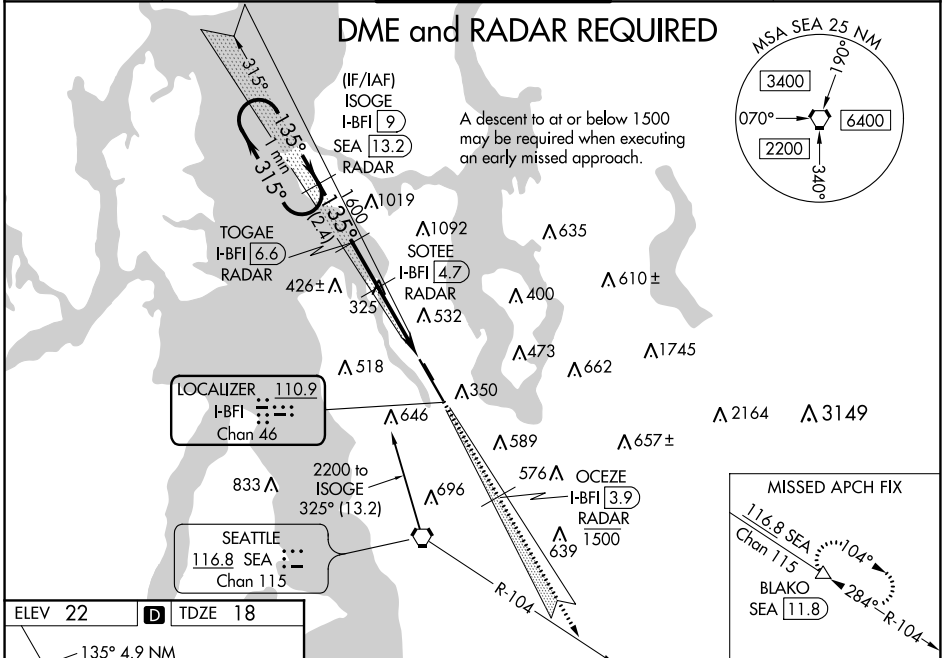
ILS or LOC RWY 14R

BOEING FLD/KING COUNTY INTL (BFI)

⚠ Circling NA for C and D northeast of Rwy 14L-32R. For inop ALS, increase S-LOC 14R visibility Cat A/B to RVR 5500, increase Cat C/D visibility to 1 1/2 SM. DME and RADAR required. Rwy 14R helicopter visibility below 3/4 SM NA. Circling Rwy 32R NA at night. S-ILS 14R # numnons NA when VGSI inop.

MALSF

MISSED APPROACH: Climb on I-BFI SE course to cross OCEZE/I-BFI 3.9 DME/RADAR at or below 1500, then climb to 6400 on I-BFI SE course and SEA R-104 to BLAKO INT/SEA 11.8 DME and hold, continue climb-in-hold to 6400.

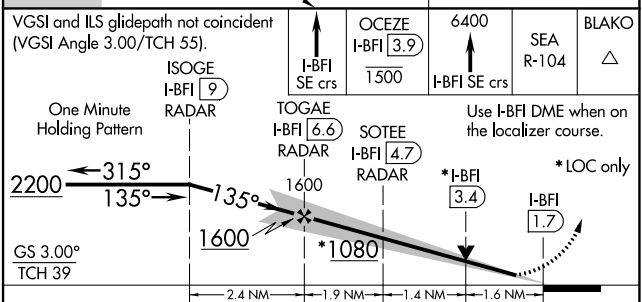
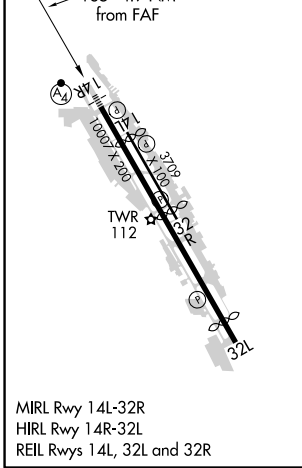
ATIS 127.75	SEATTLE APP CON 119.2 284.7	BOEING TOWER 120.6 257.8	GND CON 121.9	CLNC DEL 132.4
-----------------------	---------------------------------------	------------------------------------	-------------------------	--------------------------



NW-1, 30 DEC 2021 to 27 JAN 2022

NW-1, 30 DEC 2021 to 27 JAN 2022

ELEV 22	D	TDZE 18
---------	----------	---------



VGSI and ILS glidepath not coincident (VGSI Angle 3.00/TCH 55).	I-BFI SE crs	OCEZE I-BFI 3.9 1500	6400 I-BFI SE crs	BLAKO SEA R-104
One Minute Holding Pattern	TOGAE I-BFI 6.6 RADAR	SOTEE I-BFI 4.7 RADAR	Use I-BFI DME when on the localizer course.	
2200 ← 315°	1600 ← 135°	1600 ← 135°	*I-BFI 3.4	*I-BFI 1.7
GS 3.00° TCH 39	2.4 NM	1.9 NM	1.4 NM	1.6 NM
CATEGORY	A	B	C	D
S-ILS 14R#	308/40 290 (300-3/4)			
S-LOC 14R	580/40	562 (600-3/4)	580-1 3/8	562 (600-1 1/2)
C CIRCLING	760-1 738 (800-1)	880-1 1/4 858 (900-1 1/4)	960-2 3/4 938 (1000-2 3/4)	960-3 938 (1000-3)