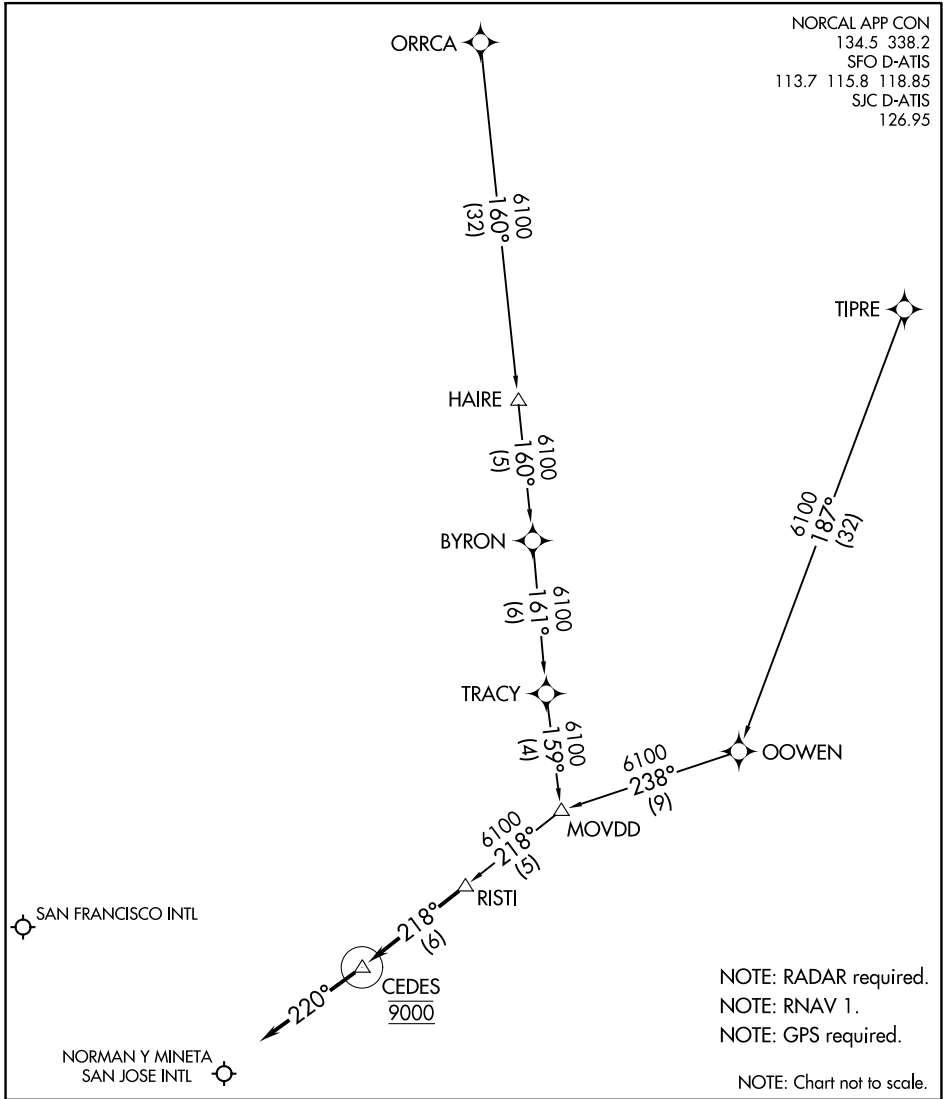


# RISTI ONE ARRIVAL (RNAV)

AL-375 (FAA)

SAN FRANCISCO, CALIFORNIA

NORCAL APP CON  
 134.5 338.2  
 SFO D-ATIS  
 113.7 115.8 118.85  
 SJC D-ATIS  
 126.95



SW-2, 30 DEC 2021 to 27 JAN 2022

SW-2, 30 DEC 2021 to 27 JAN 2022

NOTE: RADAR required.  
 NOTE: RNAV 1.  
 NOTE: GPS required.  
 NOTE: Chart not to scale.

## ARRIVAL ROUTE DESCRIPTION

ORRCA TRANSITION (ORRCA.RISTI1)

TIPRE TRANSITION (TIPRE.RISTI1)

LANDING KSFO/KSJC: From RISTI on track 218° to cross CEDES at 9000, then on heading 220° or as assigned by ATC. Expect RADAR vectors to final approach course.