

LOC/DME I-SLE <b>110.3</b> Chan 40	APP CRS <b>313°</b>	Rwy Idg <b>5811</b> TDZE <b>213</b> Apt Elev <b>213</b>
--	------------------------	---

# LOC Y RWY 31

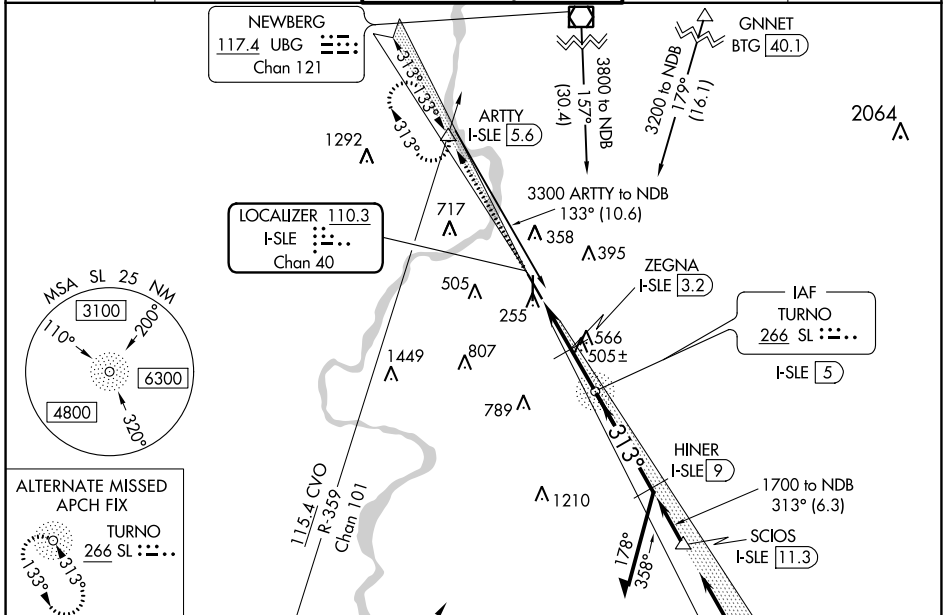
MCNARY FLD (SLE)

DME required. RADAR required.

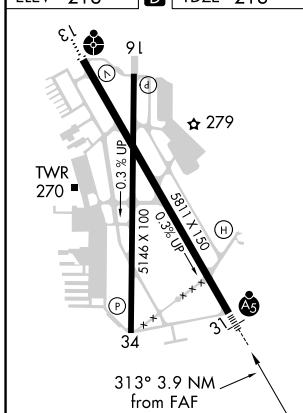
⚠ When local altimeter setting not received, use Mc Minnville altimeter setting and increase all MDAs 60 feet and visibility S-LOC 31 Cat C/D 1/8 SM and Circling Cat C 1/4 SM. For inop ALS, increase S-LOC 31 Cats C and D visibility to 1/8 SM. For inop ALS when using Mc Minnville altimeter setting, increase S-LOC 31 Cats C and D visibility to 1/4 SM. VDP NA when using Mc Minnville altimeter setting.

MALSRL MISSED APPROACH: Climb to 4000 on I-SLE Localizer NW course (313°) to ARTTY INT/I-SLE 5.6 DME and hold, continue climb-in-hold to 4000.

ATIS <b>124.55</b>	SEATTLE CENTER <b>125.8 291.7</b>	SALEM TOWER ★ <b>119.1 (CTAF) 0 257.2</b>	GND CON <b>121.9</b>	UNICOM <b>122.95</b>
-----------------------	--------------------------------------	--	-------------------------	-------------------------



ELEV 213	D	TDZE 213
----------	---	----------



CORVALLIS 115.4 CVO Chan 101

3800 to NDB 171° (23.5)

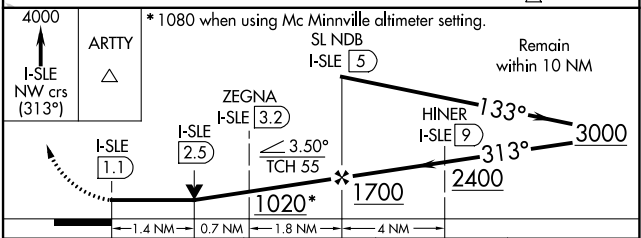
Procedure NA for arrivals at GLORR on V448 southbound.

Procedure NA for arrivals at JAIME on V536 eastbound.

Procedure NA for arrivals at ARTTY on V448 northbound.

Procedure NA for arrivals at JAIME on V536 westbound.

Remain within 10 NM



CATEGORY	A	B	C	D
S-LOC 31	780/24	567 (600-1/2)	780-1/4	567 (600-1/4)
CIRCLING	900-1	960-1	1060-2 1/2	1260-3
	687 (700-1)	747 (800-1)	847 (900-2 1/2)	1047 (1100-3)

NW-1, 30 DEC 2021 to 27 JAN 2022

NW-1, 30 DEC 2021 to 27 JAN 2022