

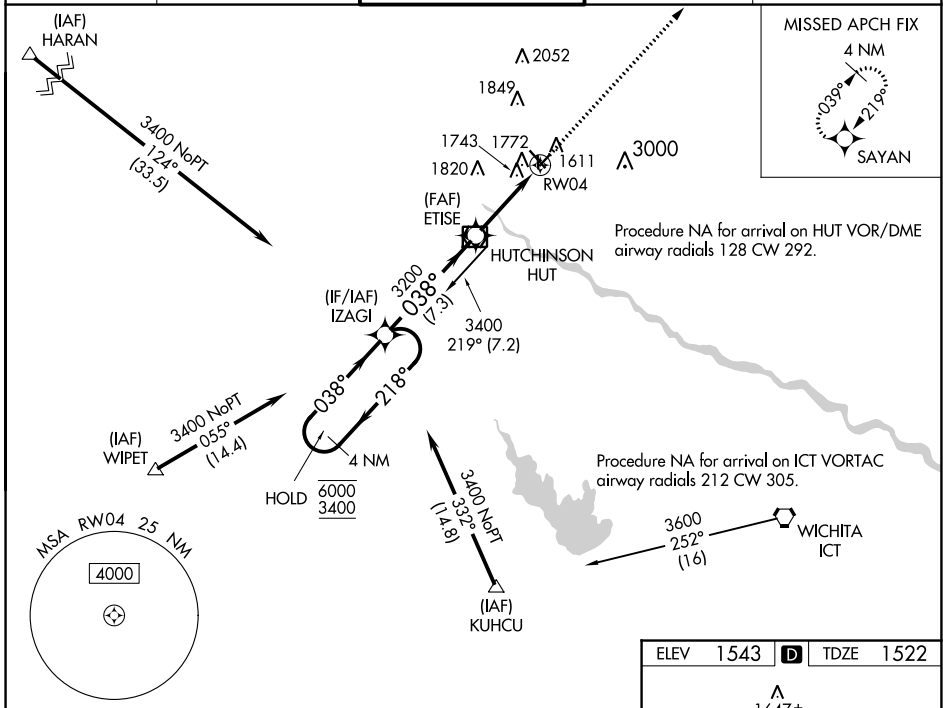
WAAS CH 56420 W04A	APP CRS 038°	Rwy Ldg TDZE 1522 Apt Elev 1543
--	------------------------	---

RNAV (GPS) RWY 4

HUTCHINSON RGNL (HUT)

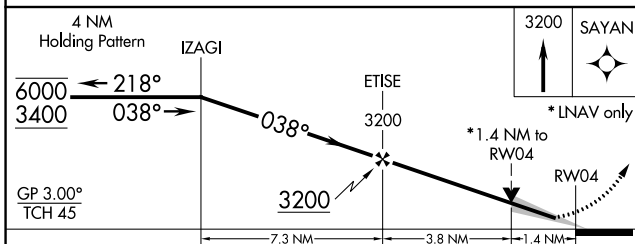
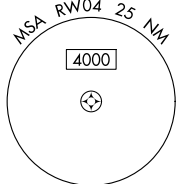
RNP APCH.		MISSED APPROACH: Climb to 3200 direct SAYAN and hold.	
<p>For uncompensated Baro-VNAV systems, LNAV/VNAV NA below -18°C or above 54°C.</p>			

ATIS 124.25	WICHITA APP CON 125.5 306.2	HUTCHINSON TOWER ★ 118.5 (CTAF) 0 363.0	GND CON 121.9	UNICOM 122.95
-----------------------	---------------------------------------	---	-------------------------	-------------------------

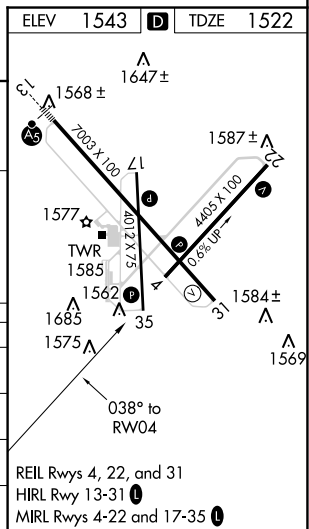


Procedure NA for arrival on HUT VOR/DME airway radials 128 CW 292.

Procedure NA for arrival on ICT VORTAC airway radials 212 CW 305.



CATEGORY	A	B	C	D
LPV DA	1722-1 200 (200-1)			NA
LNAV/VNAV DA	2064-1 5/8 542 (600-1%)			NA
LNAV MDA	2000-1	478 (500-1)	2000-1 3/8 478 (500-1%)	NA
C CIRCLING	2080-1	537 (600-1)	2200-1 3/4 657 (700-1%)	NA



REIL Rws 4, 22, and 31
HIRL Rwy 13-31
MIRL Rws 4-22 and 17-35

NC-2, 30 DEC 2021 to 27 JAN 2022

NC-2, 30 DEC 2021 to 27 JAN 2022