

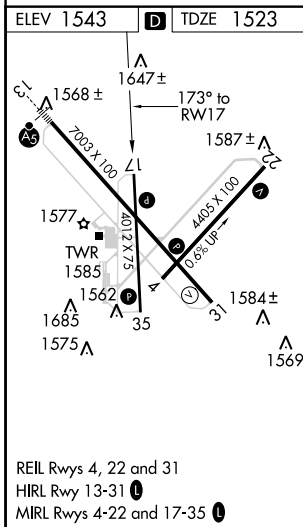
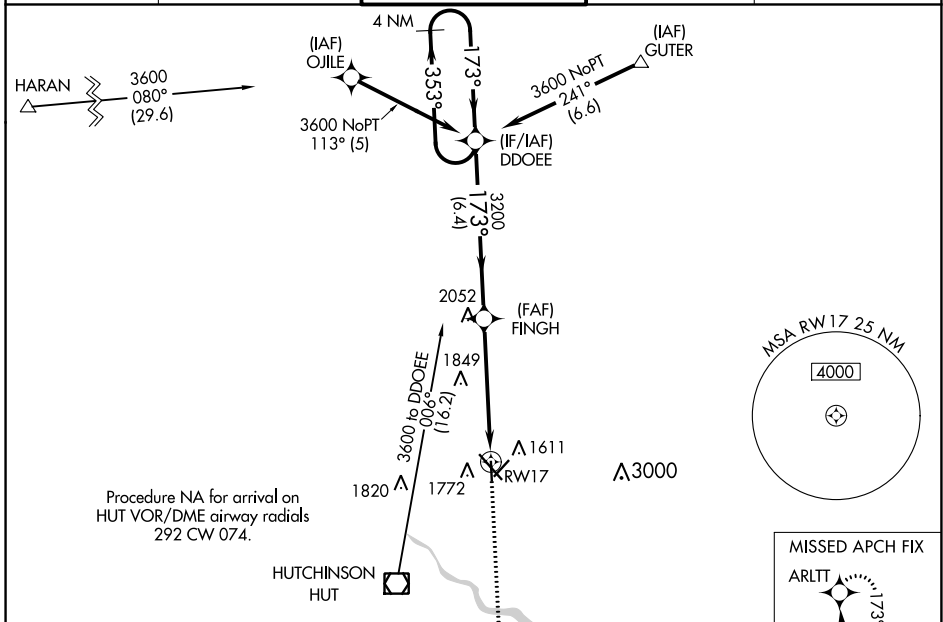
WAAS CH <b>81941</b> <b>W17A</b>	APP CRS <b>173°</b>	Rwy Idg TDZE <b>1523</b> Apt Elev <b>1543</b>	<b>4012</b>
--	------------------------	---	-------------

# RNAV (GPS) RWY 17

HUTCHINSON RGNL (HUT)

**7** Circling to Rwy 22 NA at night. For uncompensated Baro-VNAV systems, LNAV/VNAV NA below -18°C (0°F) or above 54°C (130°F). DME/DME RNP-0.3 NA. MISSED APPROACH: Climb to 3600 direct ARLTT and hold.

ATIS <b>124.25</b>	WICHITA APP CON <b>125.5 306.2</b>	HUTCHINSON TOWER * <b>118.5 (CTAF) 363.0</b>	GND CON <b>121.9</b>	UNICOM <b>122.95</b>
-----------------------	---------------------------------------	---	-------------------------	-------------------------



ELEV 1543	<b>D</b>	TDZE 1523		
<p>4 NM Holding Pattern DDOEE</p> <p>3600 ← 353°</p> <p>GP 3.00° TCH 40</p> <p>3200</p> <p>FINGH</p> <p>3200</p> <p>173°</p> <p>*1.6 NM to RWY 17</p> <p>6.4 NM</p> <p>3.5 NM</p> <p>1.6 NM</p> <p>3600</p> <p>ARLTT</p> <p>*LNAV only</p>				
CATEGORY	A	B	C	D
LPV DA	1889-1 366 (400-1)			NA
LNAV/VNAV DA	2078-1½ 555 (600-1½)			NA
LNAV MDA	2060-1	537 (600-1)	2060-1½ 537 (600-1½)	NA
<b>C</b> CIRCLING	2080-1	537 (600-1)	2200-1¾ 657 (700-1¾)	NA

NC-2, 30 DEC 2021 to 27 JAN 2022

NC-2, 30 DEC 2021 to 27 JAN 2022