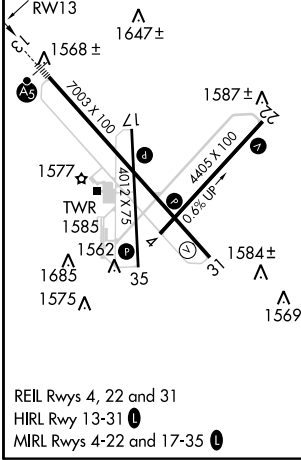
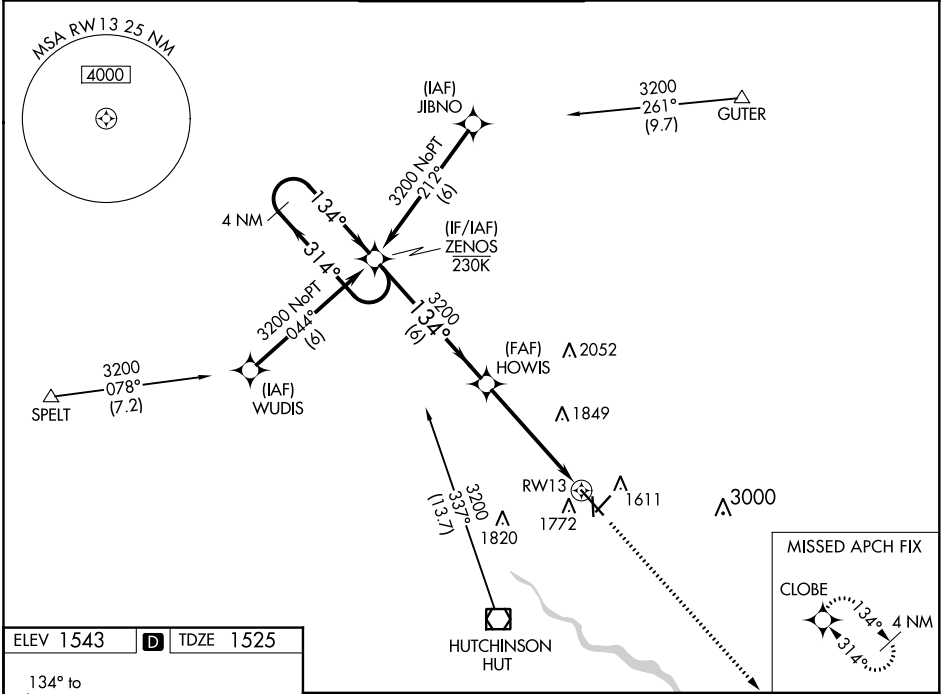


WAAS CH <b>50210</b> <b>W13A</b>	APP CRS <b>134°</b>	Rwy Idg TDZE Apt Elev	<b>7003</b> <b>1525</b> <b>1543</b>
--	------------------------	-----------------------------	---

# RNAV (GPS) RWY 13

HUTCHINSON RGNL (HUT)

<p><b>⚠</b> Circling to Rwy 22 NA at night. For uncompensated Baro-VNAV systems, LNAV/VNAV NA below -18°C (0°F) or above 54°C (130°F). DME/DME RNP-0.3 NA. # RVR 1800 authorized with use of FD or HUD to DA.</p>	MALSR	MISSED APPROACH: Climb to 3600 direct CLOBE and hold.
	<p>ATIS <b>124.25</b></p>	<p>WICHITA APP CON <b>125.5 306.2</b></p>
<p>GND CON <b>121.9</b></p>		<p>UNICOM <b>122.95</b></p>



4 NM Holding Pattern	ZENOS	HOWIS	3600	CLOBE
3200 ← 314°	→ 134°	3200	*1.7 NM to RWY 13	*LNAV only
GP 3.00°	TCH 48	6 NM	3.4 NM	1.7 NM
CATEGORY	A	B	C	D
LPV DA#	1725/24		200 (200-½)	
LNAV/VNAV DA	1932/40		407 (400-¾)	
LNAV MDA	2120/24 595 (600-½)		2120-1¼ 595 (600-1¼)	
<b>C</b> CIRCLING	2120-1 577 (600-1)		2200-1¾ 657 (700-1¾) 2720-3 1177 (1200-3)	

NC-2, 30 DEC 2021 to 27 JAN 2022

NC-2, 30 DEC 2021 to 27 JAN 2022