

|  |                        |   |
|--|------------------------|---|
| VORTAC CEC<br><b>109.0</b><br>Chan <b>27</b> | APP CRS<br><b>131°</b> | Rwy Idg <b>5002</b><br>TDZE <b>60</b><br>Apt Elev <b>61</b> |
|--|------------------------|---|

# VOR/DME RWY 12

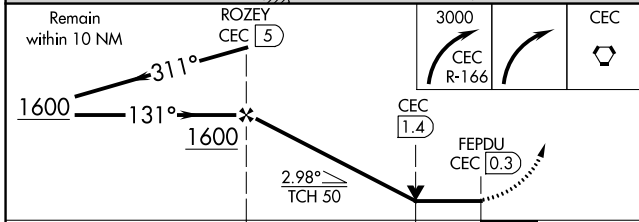
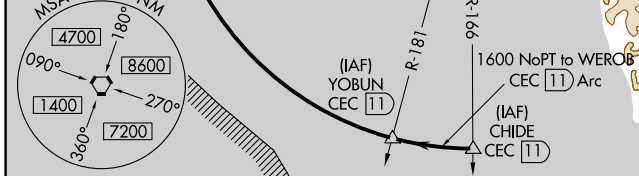
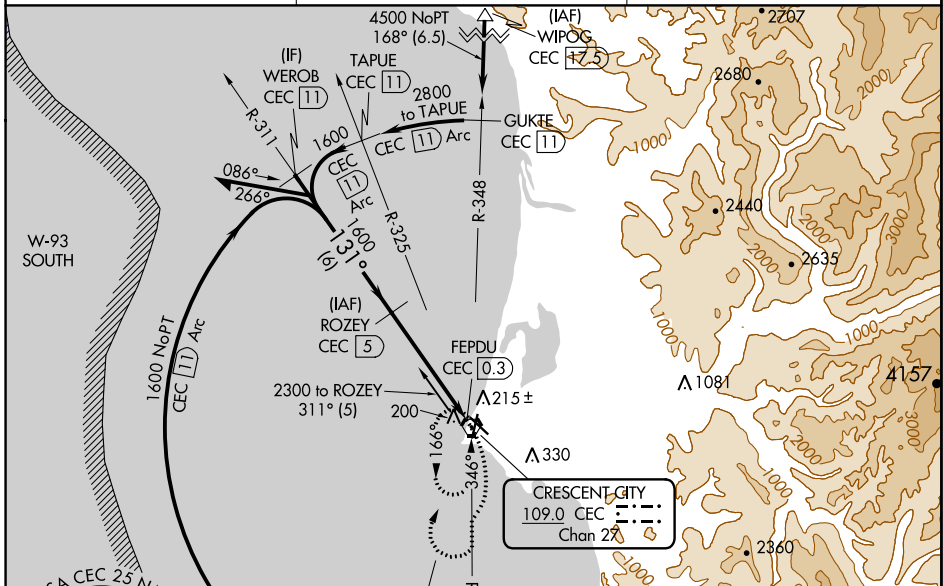
JACK MC NAMARA FLD (CEC)

**⚠** VDP NA with Brookings altimeter setting. When local altimeter setting not received, use Brookings altimeter setting and increase all MDA 100 feet; increase S-12 Cat C/D, and Circling Cat D visibility ¼ mile, and Circling Cat C visibility ½ mile. For inop MALSRS, increase S-12 Cats A/B visibility to 1 mile, Cats C/D visibility to 1½ mile. For inop MALSRS when using Brookings altimeter setting, increase S-12 Cats A/B visibility to 1 mile, Cats C/D visibility to 1½ mile. Night Landing: Rwy 18, 30 NA. Night Landing: Rwy 36 operational VGSI required, remain on or above VGSI glidepath until threshold.

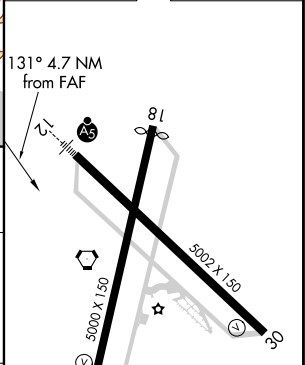
**MALSRS**  
A5

**MISSED APPROACH:**  
Climbing right turn to 3000 on CEC VORTAC R-166 then right turn direct CEC VORTAC and hold.

|                        |                                       |                               |
|------------------------|---------------------------------------|-------------------------------|
| ASOS<br><b>119.925</b> | SEATTLE CENTER<br><b>124.85 306.3</b> | UNICOM<br><b>122.8 (CTAF)</b> |
|------------------------|---------------------------------------|-------------------------------|



|         |         |
|---------|---------|
| ELEV 61 | TDZE 60 |
|---------|---------|



| CATEGORY          | A     | B           | C                      | D                    |
|-------------------|-------|-------------|------------------------|----------------------|
| S-12              | 480-¾ | 420 (500-¾) | 480-1                  | 420 (500-1)          |
| <b>C</b> CIRCLING | 540-1 | 479 (500-1) | 640-1½<br>579 (600-1½) | 640-2<br>579 (600-2) |

HIRL Rwy 12-30  
 REIL Rws 18, 30 and 36  
 MIRL Rwy 18-36

SW-2, 30 DEC 2021 to 27 JAN 2022

SW-2, 30 DEC 2021 to 27 JAN 2022