

VORTAC CEC 109.0 Chan 27	APP CRS 131°	Rwy Idg TDZE Apt Elev	5002 60 61
---------------------------------------	------------------------	-----------------------------	---------------------------------------

VOR RWY 12

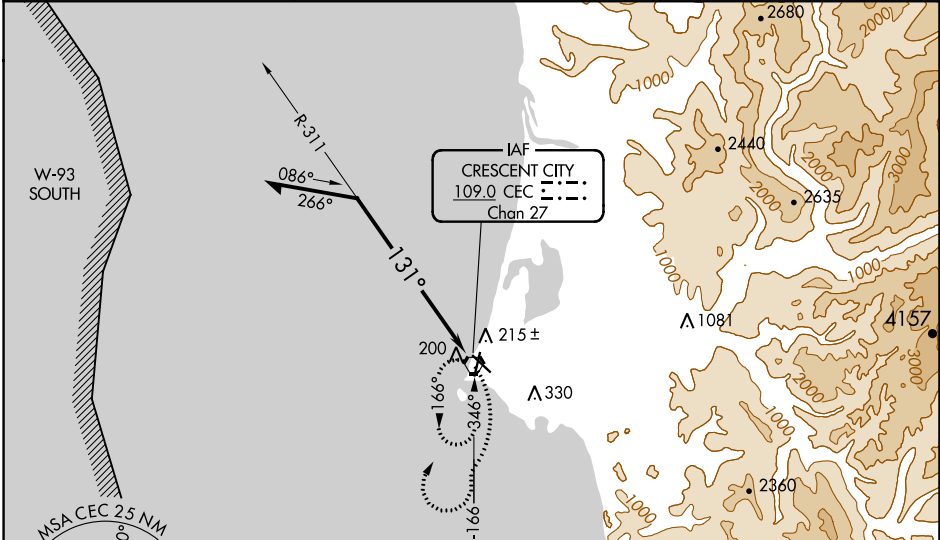
JACK MC NAMARA FLD (CEC)

⚠ When local altimeter setting not received, use Brookings altimeter setting and increase all MDA 100 feet; increase S-12 Cat C/D visibility $\frac{3}{8}$ mile, Circling Cat D visibility $\frac{1}{4}$ mile and Circling Cat C visibility $\frac{1}{2}$ mile. For inop MALSAR increase S-12 Cat A/B visibility to 1 mile, and Cat C/D visibility to $1\frac{1}{2}$ mile. For inop MALSAR when using Brookings altimeter setting, increase S-12 Cat A/B visibility to 1 mile, and Cat C/D visibility to $1\frac{1}{2}$ mile. Night Landing: Rwy 36 operational VGSI required, remain on or above VGSI glidepath until threshold. Night Landing: Rwy 18, 30 NA.

MALSAR

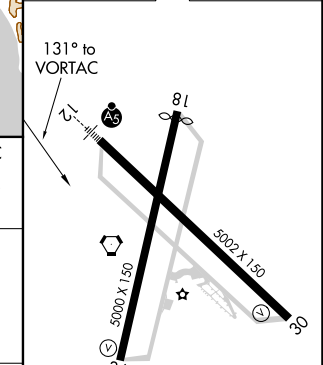
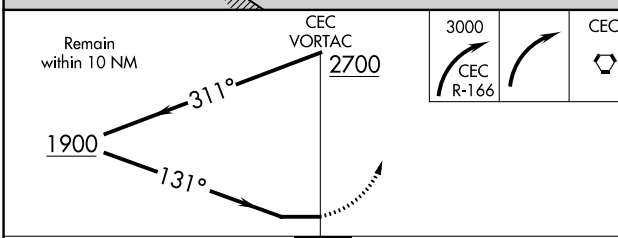
MISSED APPROACH: Climbing right turn to 3000 on CEC VORTAC R-166 then right turn direct CEC VORTAC and hold.

ASOS 119.925	SEATTLE CENTER 124.85 306.3	UNICOM 122.8 (CTAF) 📻
------------------------	---------------------------------------	--



Circular inset showing MSA CEC 25 NM with altitudes and bearings.

ELEV 61	D TDZE 60
---------	------------------



CATEGORY	A	B	C	D
S-12	520- $\frac{3}{4}$	460 (500- $\frac{3}{4}$)	520-1	460 (500-1)
C CIRCLING	540-1	479 (500-1)	640-1 $\frac{1}{2}$ 579 (600-1 $\frac{1}{2}$)	640-2 579 (600-2)

HIRL Rwy 12-30 **📻**
 MIRL Rwy 18-36 **📻**
 REIL Rws 18, 30 and 36 **📻**

SW-2, 30 DEC 2021 to 27 JAN 2022

SW-2, 30 DEC 2021 to 27 JAN 2022