

RNAV (GPS) RWY 32

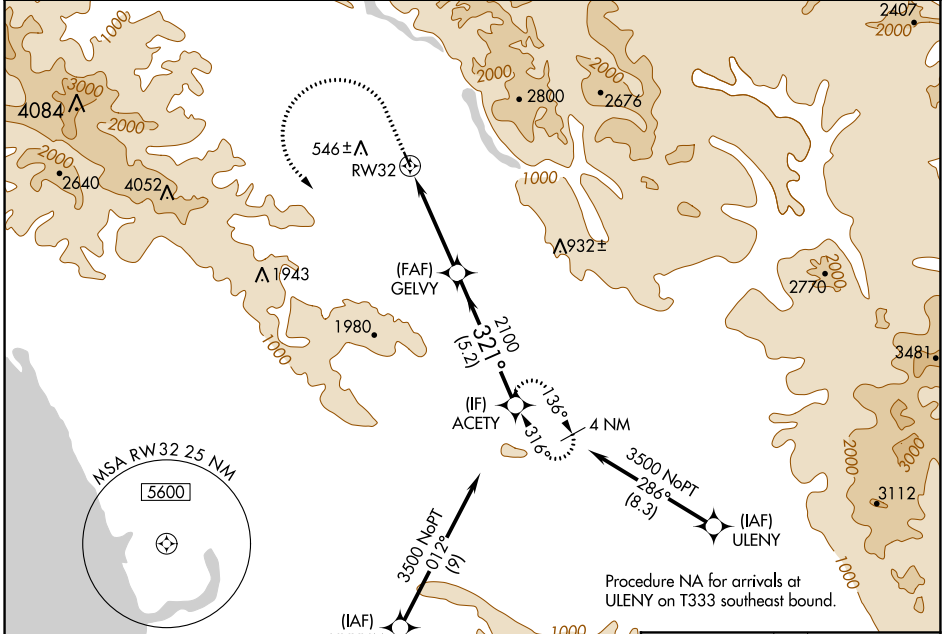
SAN MARTIN (E16)

| | | |
|-------------|----------|-------------|
| APP CRS | Rwy Idg | 3095 |
| 321° | TDZE | 284 |
| | Apt Elev | 284 |

RNP APCH.
 ⚠ Circling NA southwest of Rwy 14-32. Rwy 32 helicopter visibility reduction below ¾ SM NA.

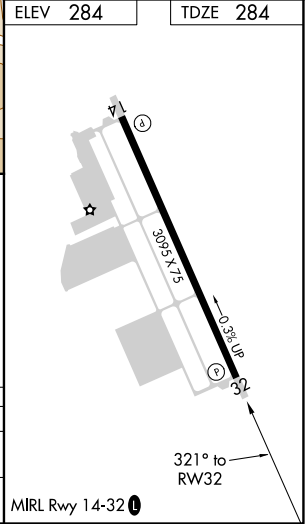
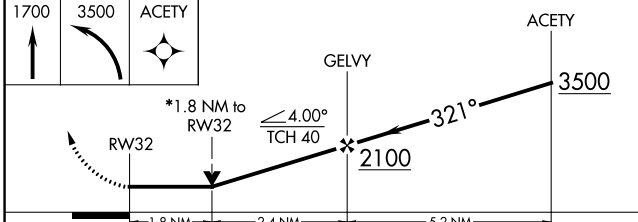
MISSED APPROACH: Climb to 1700 then climbing left turn to 3500 direct ACETY and hold.

| | | |
|--------------------------|--|---------------------------------|
| AWOS-3P 118.35 | NORCAL APP CON 124.525 348.675 | UNICOM 122.7 (CTAF) 0 |
|--------------------------|--|---------------------------------|



Procedure NA for arrival on SNS VORTAC airway radials 264 CW 068.

ELEV 284 | TDZE 284



| CATEGORY | A | B | C | D |
|----------|-----------------------|-------------------------|----|---|
| LNAV MDA | 1060-1 776 (800-1) | 1060-1¼ 776 (800-1¼) | NA | |
| CIRCLING | 1060-1 776 (800-1) | 1160-1¼ 876 (900-1¼) | NA | |

SW-2, 04 NOV 2021 to 02 DEC 2021

SW-2, 04 NOV 2021 to 02 DEC 2021