

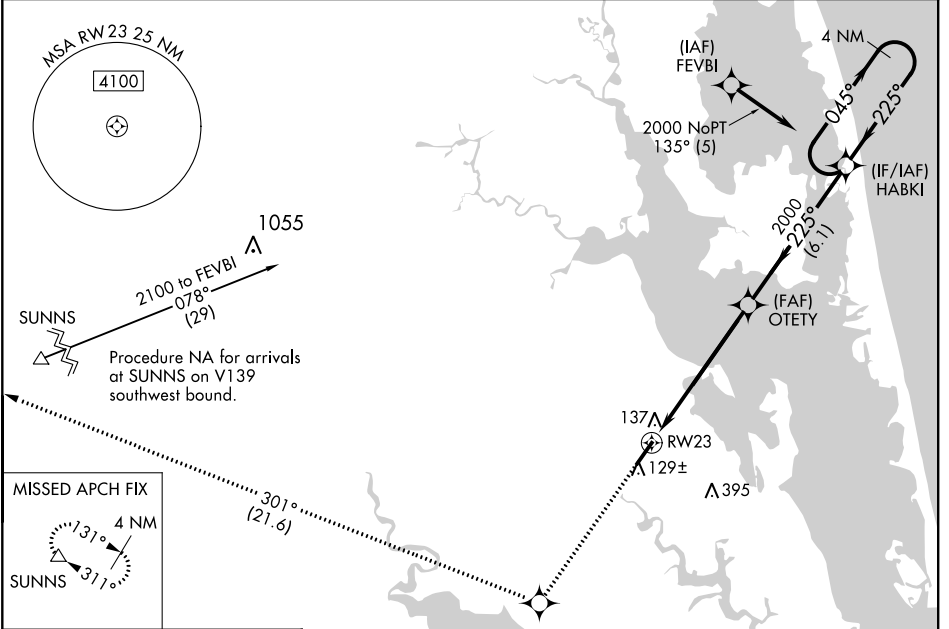
WAAS CH <b>97408</b> <b>W23A</b>	APP CRS <b>225°</b>	Rwy Idg TDZE <b>18</b> Apt Elev <b>18</b>	<b>5502</b>
--	------------------------	---	-------------

# RNAV (GPS) RWY 23

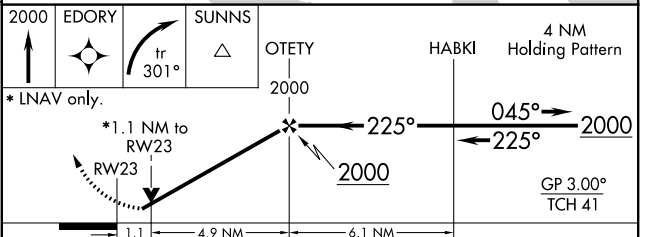
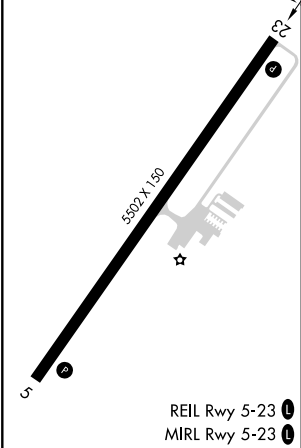
CURRITUCK COUNTY RGNL (ONX)

RNP APCH.	For uncompensated Baro-VNAV systems, LNAV/VNAV NA below -15°C (5°F) or above 49°C (120°F). Rwy 23 helicopter visibility reduction below ¾ SM NA.	MISSED APPROACH: Climb to 2000 direct EDORY and right turn on track 301° to SUNNS and hold.
-----------	--	---

AWOS-3 <b>119.775</b>	OCEANA APP CON <b>123.9 266.8</b>	CTAF <b>122.9 0</b>
--------------------------	--------------------------------------	------------------------



ELEV <b>18</b>	TDZE <b>18</b>
----------------	----------------



CATEGORY	A	B	C	D
LPV DA		384-1¼	366 (400-1¼)	
LNAV/VNAV DA		424-1½	406 (500-1½)	
LNAV MDA	400-1	382 (400-1)	400-1¼	382 (400-1¼)
CIRCLING	440-1 422 (500-1)	480-1 462 (500-1)	480-1½ 462 (500-1½)	760-2½ 742 (800-2½)

SE-2, 04 NOV 2021 to 02 DEC 2021

SE-2, 04 NOV 2021 to 02 DEC 2021