

APP CRS	Rwy Idg	<b>2621</b>
<b>297°</b>	TDZE	<b>5</b>
	Apt Elev	<b>5</b>

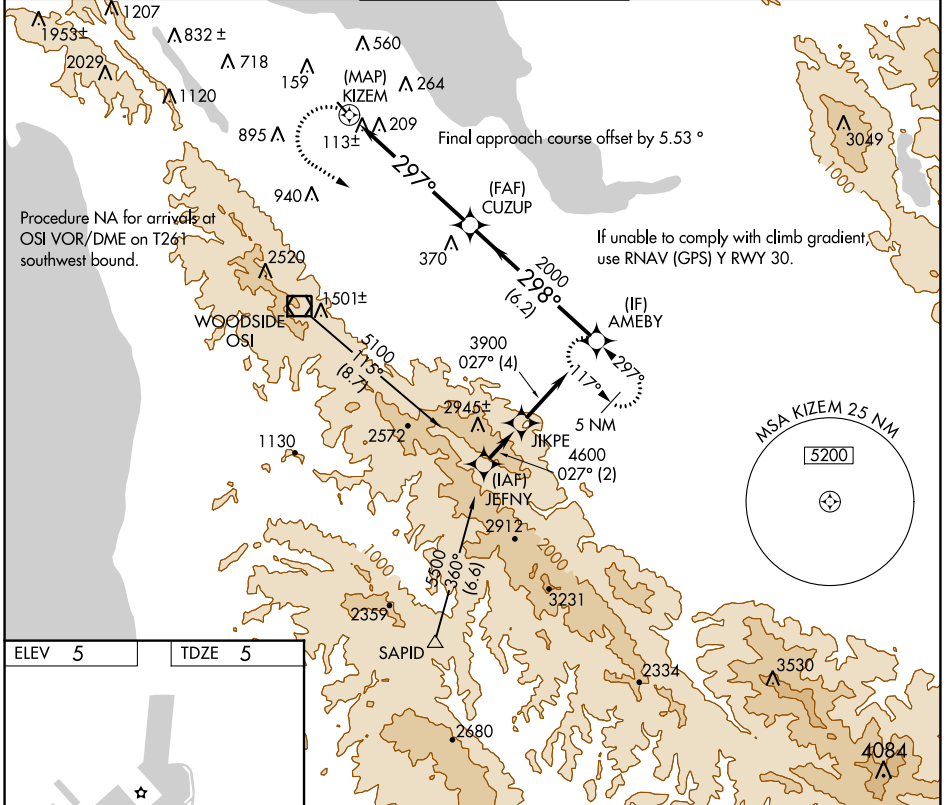
# RNAV (GPS) Z RWY 30

SAN CARLOS (SQL)

**▽** DME/DME RNP-0.3 NA. When local altimeter setting not received, use San Francisco Intl altimeter setting and increase all MDA 40 feet. Rwy 30 visibility reduction by helicopters below 1 SM NA.

**▲** MISSED APPROACH: Climbing left turn to 5400 direct AMEBY and hold, continue climb-in-hold to 5400. Missed approach requires minimum climb of 302 feet per NM to 5400.

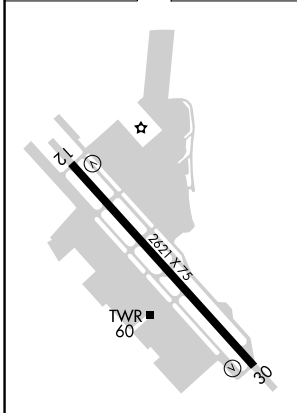
ATIS <b>125.9</b>	NORCAL APP CON <b>133.95 317.6</b>	SAN CARLOS TOWER ★ <b>119.0 (CTAF) 0 326.2</b>	GND CON <b>121.6</b>	UNICOM <b>122.95</b>
----------------------	---------------------------------------	---------------------------------------------------	-------------------------	-------------------------



Procedure NA for arrivals at OSI VOR/DME on T261 southwest bound.

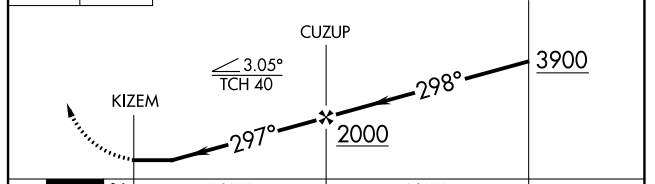
If unable to comply with climb gradient, use RNAV (GPS) Y RWY 30.

ELEV	<b>5</b>	TDZE	<b>5</b>
------	----------	------	----------



REIL Rwy 12 and 30 **1**  
MIRL Rwy 12-30 **1**

5400 AMEBY VGSI and descent angles not coincident (VGSI Angle 3.00/TCH 25).



CATEGORY	A	B	C	D
LNAV MDA	900-1¼ 895 (900-1¼)	900-1½ 895 (900-1½)	NA	

SW-2, 04 NOV 2021 to 02 DEC 2021

SW-2, 04 NOV 2021 to 02 DEC 2021