

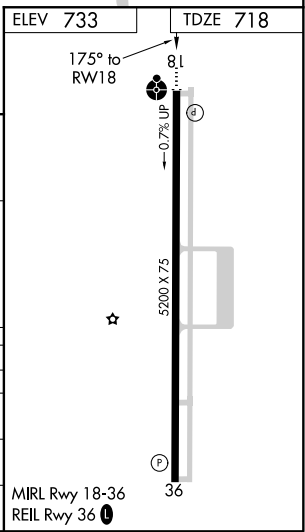
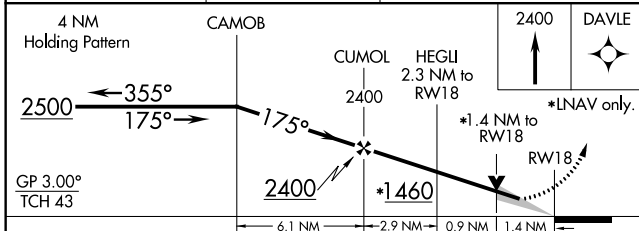
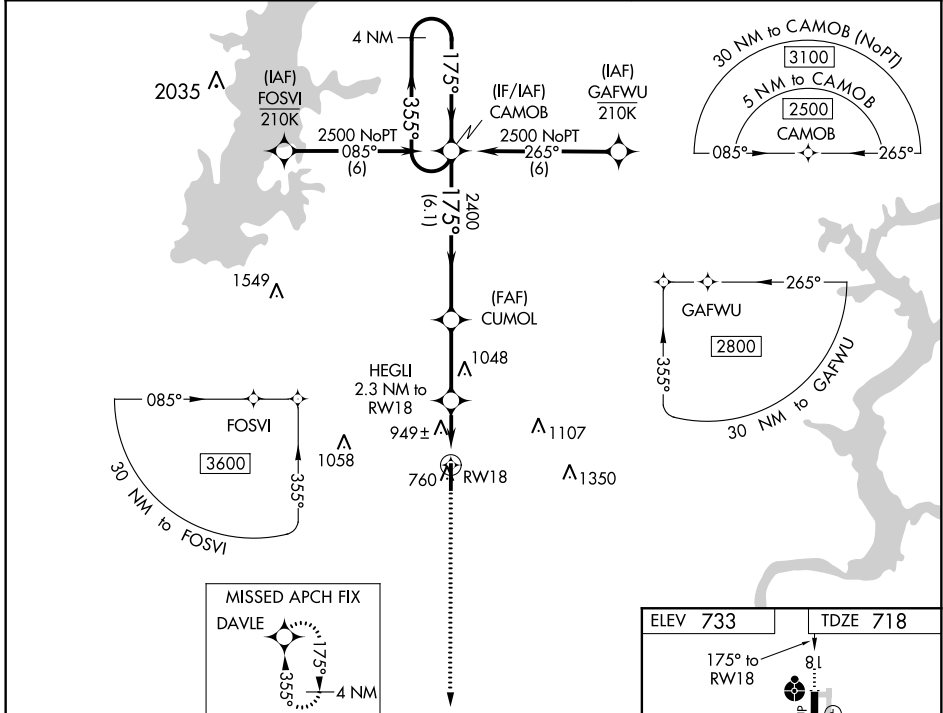
WAAS CH 63214 W18A	APP CRS 175°	Rwy Idg 5200 TDZE 718 Apt Elev 733
--	------------------------	---

RNAV (GPS) RWY 18

CLAREMORE RGNL (GCM)

For uncompensated Baro-VNAV systems, LNAV/VNAV NA below -16°C (4°F) or above 54°C (130°F). DME/DME RNP-0.3 NA. For inop ALS, increase LNAV/VNAV Cats A/B visibility to 1% SM.	ODALS 	MISSED APPROACH: Climb to 2400 direct DAVLE and hold.
---	-----------	---

AWOS-3P 119.925	TULSA APP CON 119.1 351.8	UNICOM 122.7 (CTAF) 0
---------------------------	-------------------------------------	---------------------------------



CATEGORY	A	B	C	D
LPV DA	968- ³ / ₄	250 (300- ³ / ₄)		NA
LNAV/VNAV DA	1281-1 ¹ / ₂	563 (600-1 ¹ / ₂)		NA
LNAV MDA	1200- ³ / ₄	482 (500- ³ / ₄)	1200-1 ¹ / ₄ 482 (500-1 ¹ / ₄)	NA
CIRCLING	1260-1	527 (600-1)	1380-1 ³ / ₄ 647 (700-1 ³ / ₄)	NA

SC-1, 04 NOV 2021 to 02 DEC 2021

SC-1, 04 NOV 2021 to 02 DEC 2021