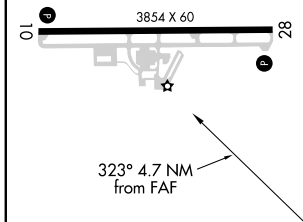
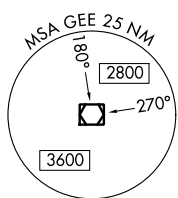
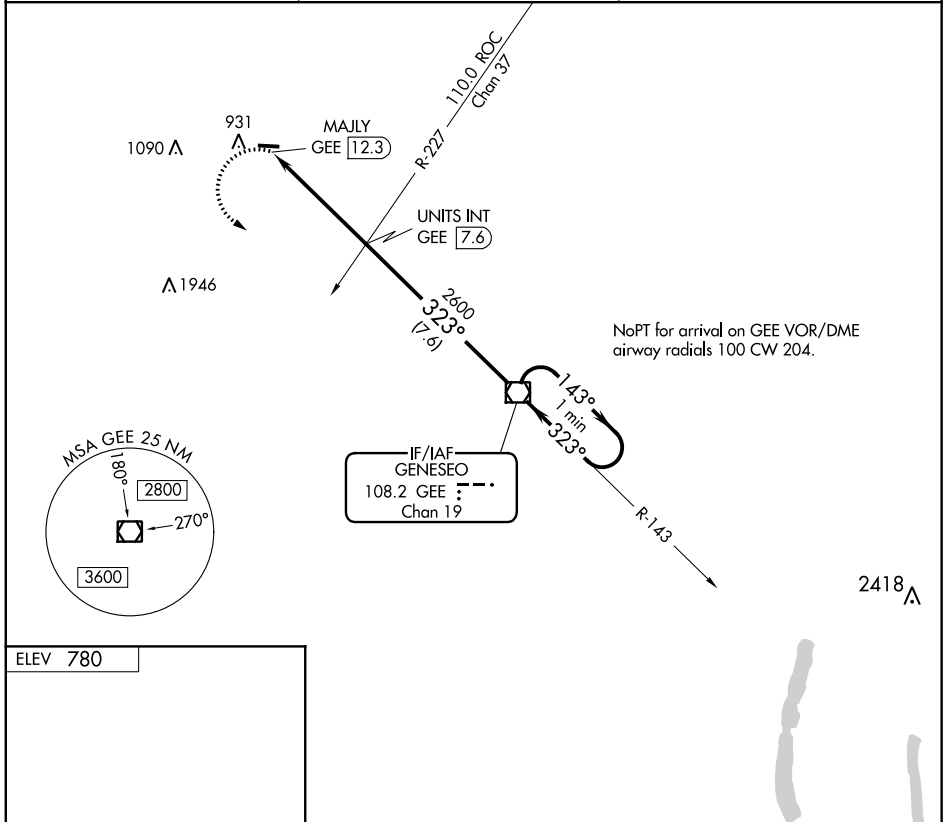


VOR/DME GEE <b>108.2</b> Chan <b>19</b>	APP CRS <b>323°</b>	Rwy Idg TDZE Apt Elev	<b>N/A</b> <b>N/A</b> <b>780</b>
---	------------------------	-----------------------------	--

**VOR-A**  
LE ROY (5G $\emptyset$ )

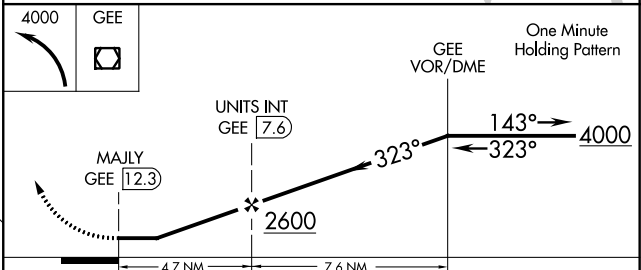
<p><b>⚠</b> NA Use Greater Rochester altimeter setting. Circling Rwy 10 NA at night. When Circling to Rwy 28 at night, operational VGSI required, remain on or above VGSI glidepath until threshold.</p>	<p><b>MISSED APPROACH:</b> Climbing left turn to 4000 direct GEE VOR/DME and hold.</p>
--	--

ROC ASOS <b>124.825</b>	ROCHESTER APP CON <b>123.7 322.3</b>	UNICOM <b>122.8 (CTAF)</b> <b>📞</b>
----------------------------	---	--



MIRL Rwy 10-28 **📞**  
REIL Rwys 10 and 28 **📞**

FAF to MAP 4.7 NM					
Knots	60	90	120	150	180
Min:Sec	4:42	3:08	2:21	1:53	1:34



CATEGORY	A	B	C	D
CIRCLING	1440-1 660 (700-1)		NA	

NE-2, 04 NOV 2021 to 02 DEC 2021

NE-2, 04 NOV 2021 to 02 DEC 2021