

| | | | |
|--|------------------------|---|-------------|
| WAAS CH 90527 W23A | APP CRS 229° | Rwy Idg TDZE 26 Apt Elev 26 | 5105 |
|--|------------------------|---|-------------|

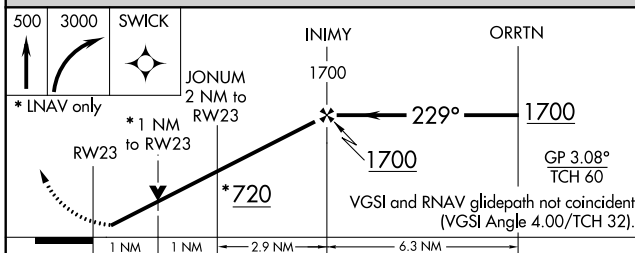
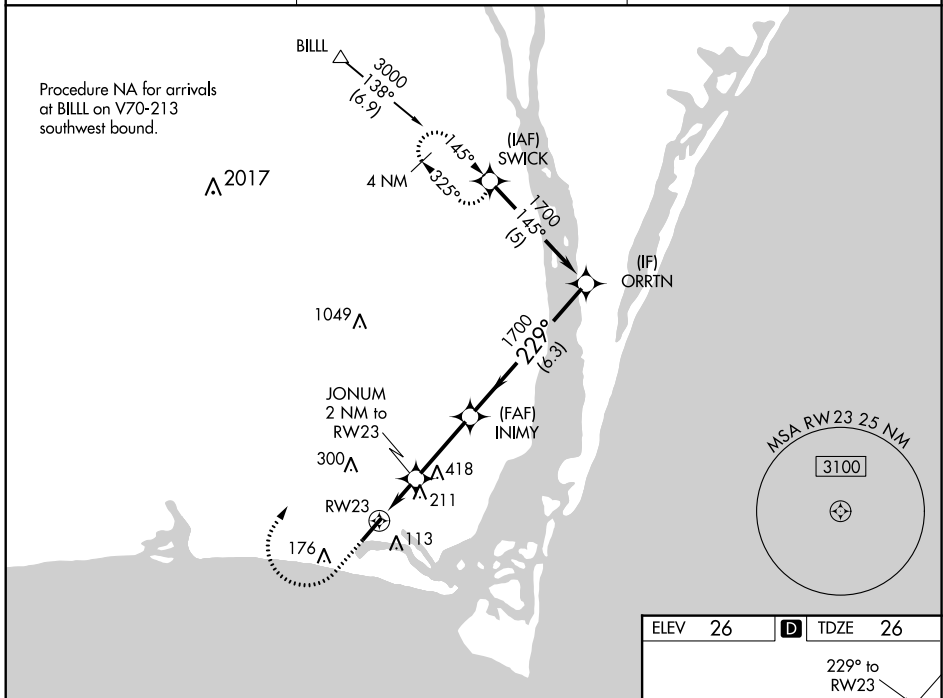
RNAV (GPS) RWY 23

CAPE FEAR RGJL JETPORT/HOWIE FRANKLIN FLD (SU'T)

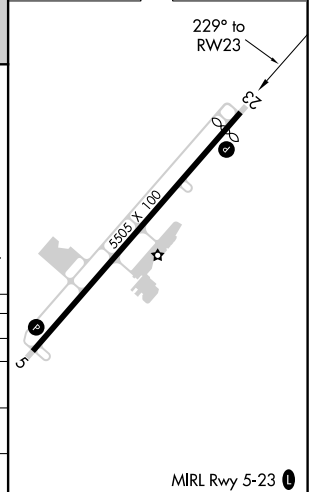
⚠ Baro-VNAV NA when using Wilmington altimeter setting. For uncompensated Baro-VNAV systems, LNAV/VNAV NA below -15°C (5°F) or above 54°C (130°F). When local altimeter setting not received, use Wilmington altimeter setting, and increase all DA 52 feet and all MDA 60 feet. DME/DME RNP-0.3 NA. Helicopter visibility reduction below 3/4 SM NA. VDP NA when using Wilmington altimeter setting.

⚠ MISSED APPROACH: Climb to 500 then climbing right turn to 3000 direct SWICK and hold.

| | | |
|---------------------------|--|----------------------------------|
| AWOS-3P 124.175 | WILMINGTON APP CON * 118.25 284.65 | UNICOM 123.05 (CTAF) 1 |
|---------------------------|--|----------------------------------|



| | |
|---------|------------------|
| ELEV 26 | D TDZE 26 |
|---------|------------------|



| CATEGORY | A | B | C | D |
|--------------|-------|-------------|------------------------------|----|
| LPV DA | 284-1 | 258 (300-1) | | NA |
| LNAV/VNAV DA | 276-1 | 250 (300-1) | | NA |
| LNAV MDA | 480-1 | 454 (500-1) | 480-1 3/8 454 (500-1 3/8) | NA |
| CIRCLING | 480-1 | 454 (500-1) | 520-1 1/2 494 (500-1 1/2) | NA |

SE-2, 04 NOV 2021 to 02 DEC 2021

SE-2, 04 NOV 2021 to 02 DEC 2021