

VOR/DME MBS 112.9 Chan 76	APP CRS 125°	Rwy Idg TDZE Apt Elev 602	N/A N/A
---	------------------------	---	--------------------------

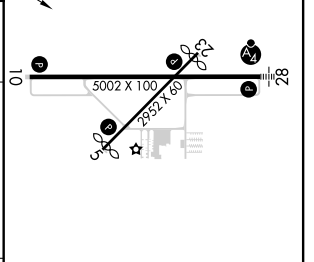
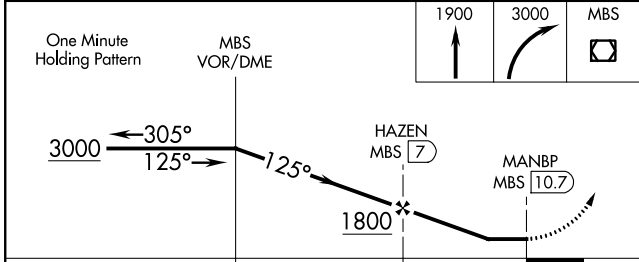
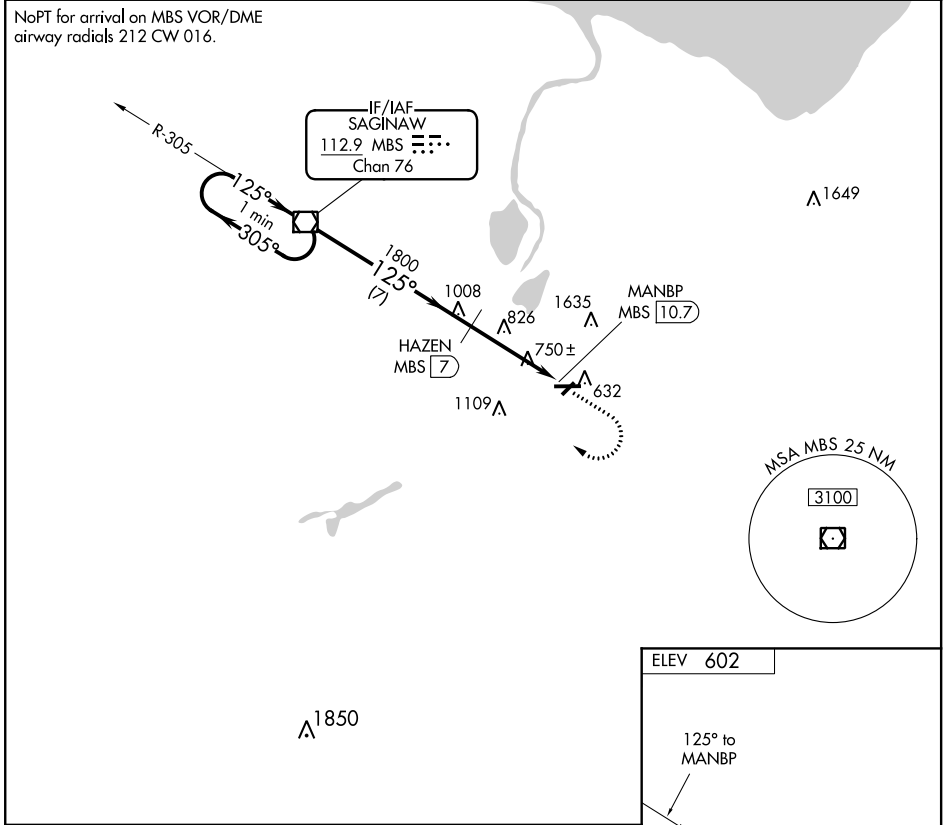
VOR/DME-A

SAGINAW COUNTY H W BROWNE (HYX)

⚠ Circling to Rwy 5/23 NA at night. When local altimeter setting not received, use Saginaw MBS Intl altimeter setting and increase all MDA 40 feet and increase Circling Cat C visibility ¼ SM. Circling NA for Cat C north of Rwy 10-28.

⚠ MISSED APPROACH: Climb to 1900 then climbing right turn to 3000 direct MBS VOR/DME and hold.

AWOS-3P 118.325	GREAT LAKES APP CON * 120.95 235.625	UNICOM 122.8 (CTAF) 📻
---------------------------	--	--



CATEGORY	A	B	C	D
📻 CIRCLING	1160-1	558 (600-1)	1460-2½ 858 (900-2½)	NA

VOR/DME-A

EC-1, 04 NOV 2021 to 02 DEC 2021

EC-1, 04 NOV 2021 to 02 DEC 2021