

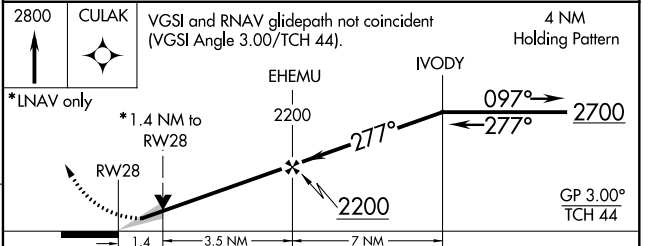
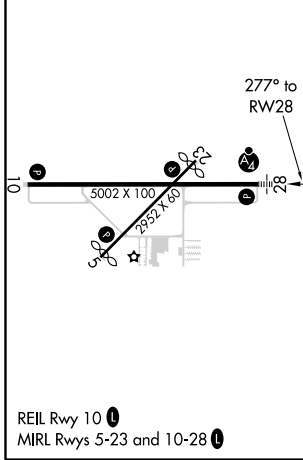
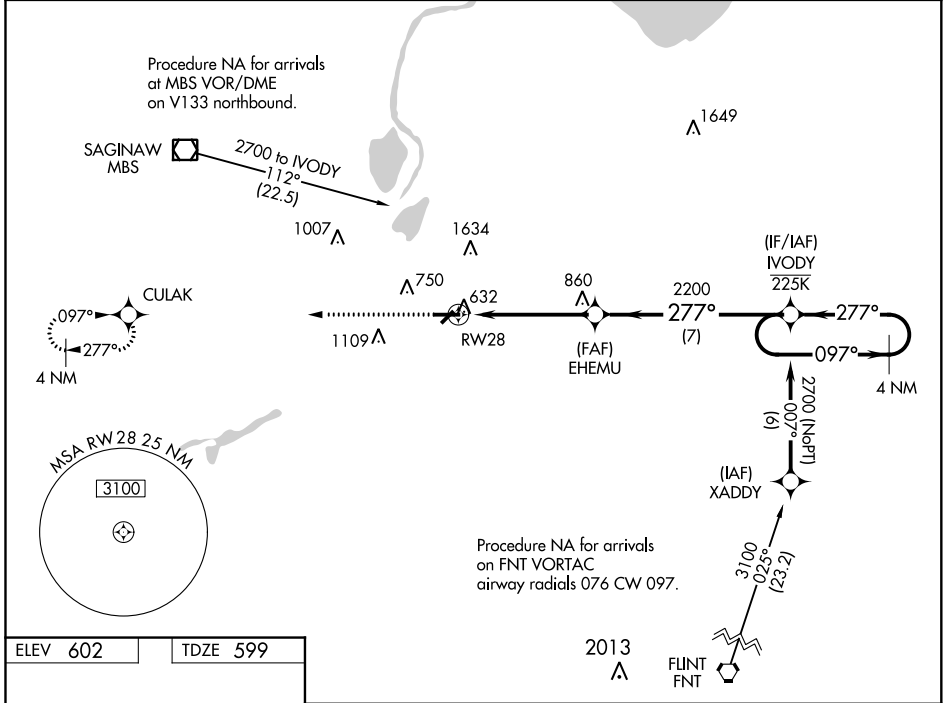
WAAS CH <b>90200</b> <b>W28A</b>	APP CRS <b>277°</b>	Rwy Idg TDZE Apt Elev	<b>5002</b> <b>599</b> <b>602</b>
--	------------------------	-----------------------------	---

# RNAV (GPS) RWY 28

SAGINAW COUNTY H W BROWNE (HYX)

<p><b>⚠</b> Inop table does not apply to LPV DA. For uncompensated Baro-VNAV systems, LNAV/VNAV NA below -18°C (0°F) or above 54°C (130°F). Circling NA for Cat C north of Rwy 10-28. Circling Rwy 5, 23 NA at night. DME/DME RNP-0.3 NA. For inop ALS, increase LNAV/VNAV all Cats visibility to ½ SM.</p>	<p>MALSF </p>	<p>MISSED APPROACH: Climb to 2800 direct CULAK and hold.</p>
---	---------------	--

AWOS-3P <b>118.325</b>	GREAT LAKES APP CON* <b>120.95 235.625</b>	UNICOM <b>122.8 (CTAF) 0</b>
---------------------------	---	---------------------------------



CATEGORY	A	B	C	D
LPV DA	804-¾	205 (300-¾)		NA
LNAV/VNAV DA	849-¾	250 (300-¾)		NA
LNAV MDA	1080-¾ 481 (500-¾)	1080-1½ 481 (500-1½)		NA
<b>C</b> CIRCLING	1100-1 498 (500-1)	1460-2½ 858 (900-2½)		NA

# RNAV (GPS) RWY 28

EC-1, 04 NOV 2021 to 02 DEC 2021

EC-1, 04 NOV 2021 to 02 DEC 2021