

WAAS CH <b>77699</b> <b>W17A</b>	APP CRS <b>176°</b>	Rwy Idg <b>5006</b> TDZE <b>474</b> Apt Elev <b>474</b>
--	------------------------	---

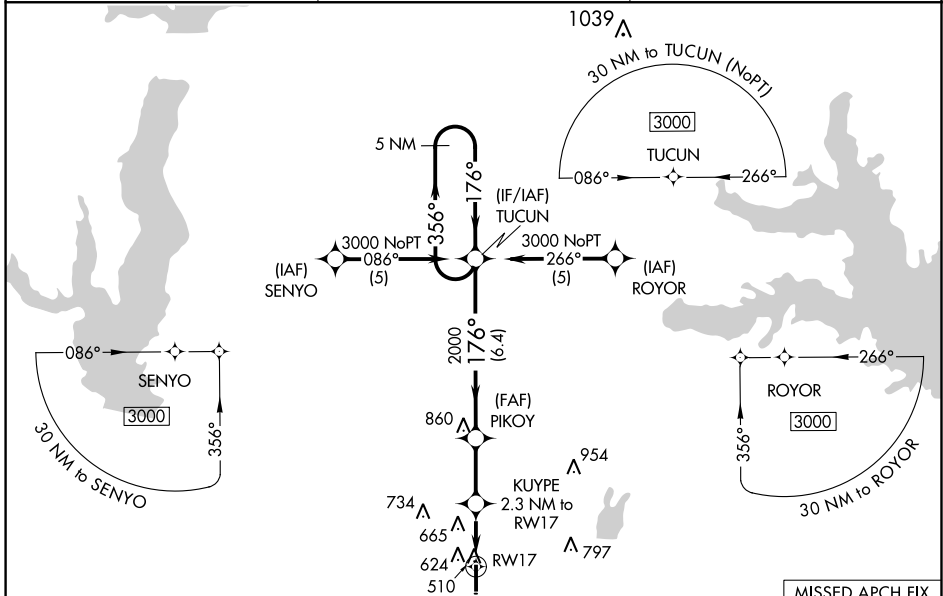
# RNAV (GPS) RWY 17

TERRELL MUNI (TRL)

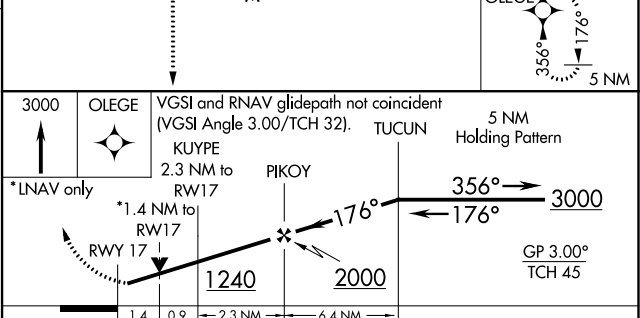
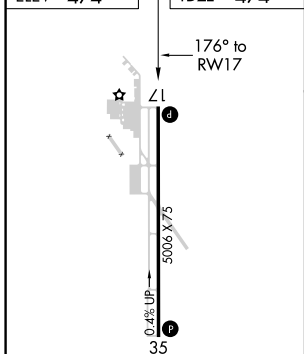
**⚠** When local altimeter setting not received, use Dallas Love Fld altimeter setting: increase LPV DA to 829 feet; increase LNAV/VNAV DA to 1086 feet and all visibilities  $\frac{3}{8}$  SM; increase all MDAs 80 feet and visibility Cat C  $\frac{1}{4}$  SM. Baro-VNAV and VDP NA when using Dallas Love Fld altimeter setting. For uncompensated Baro-VNAV systems, LNAV/VNAV NA below -7°C (20°F) or above 54°C (130°F). DME/DME RNP-0.3 NA. Helicopter visibility reduction below  $\frac{3}{8}$  SM NA.

**MISSED APPROACH:** Climb to 3000 direct OLEGE and hold.

ASOS <b>119.275</b>	FORT WORTH CENTER <b>132.025 360.75</b>	UNICOM <b>122.8 (CTAF) 0</b>
------------------------	--	---------------------------------



ELEV <b>474</b>	TDZE <b>474</b>
-----------------	-----------------



CATEGORY	A	B	C	D
LPV DA	756-1 282 (300-1)			NA
LNAV/VNAV DA	1013-1 $\frac{7}{8}$ 539 (600-1 $\frac{3}{8}$ )			NA
LNAV MDA	960-1 486 (500-1)		960-1 $\frac{3}{8}$ 486 (500-1 $\frac{3}{8}$ )	NA
CIRCLING	1000-1 526 (600-1)	1020-1 546 (600-1)	1100-1 $\frac{3}{4}$ 626 (700-1 $\frac{3}{4}$ )	NA

RLS Rwy 17 **0**  
REIL Rws 17 and 35  
MIRL Rws 17-35 **0**

SC-2, 04 NOV 2021 to 02 DEC 2021

SC-2, 04 NOV 2021 to 02 DEC 2021