

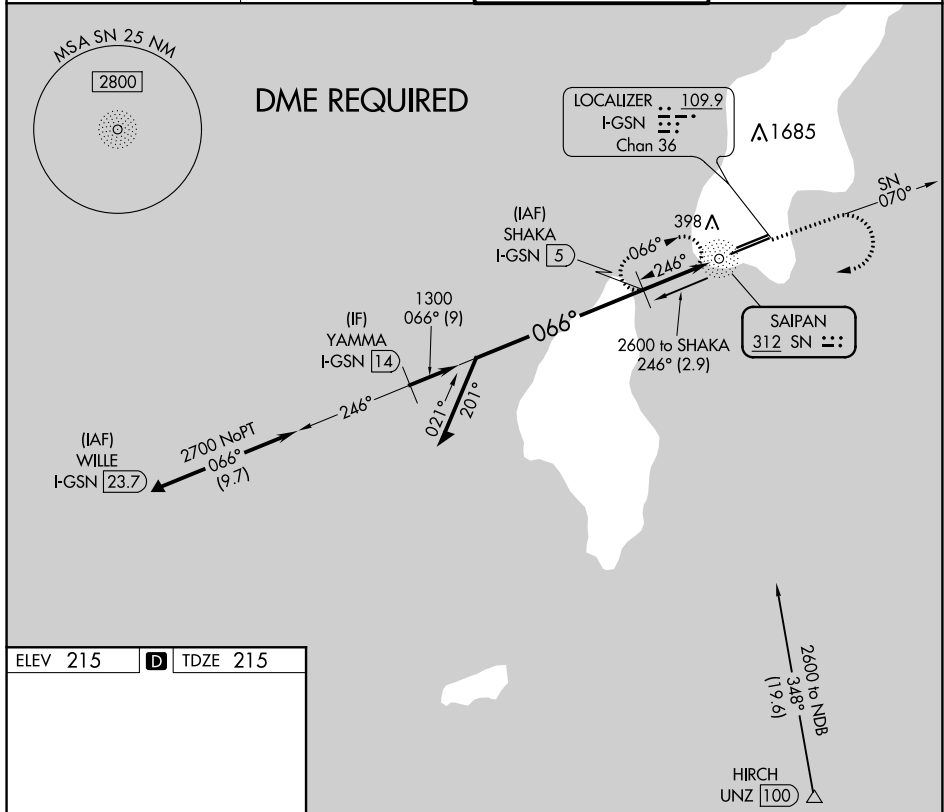
NDB SN 312	APP CRS 066°	Rwy Idg TDZE Apt Elev	8700 215 215
----------------------	------------------------	-----------------------------	---

NDB Z RWY 7

FRANCISCO C ADA/SAIPAN INTL (GSN)(PGSN)

<p>Circling NA north of Rwy 6-24. DME required.</p>	<p>MALSRS</p>	<p>MISSED APPROACH: Climb to 1600 on SN NDB bearing 070° then climbing right turn to 3000 direct SN NDB then on SN NDB bearing 246° to SHAKA/I-GSN 5 DME and hold.</p>
---	---------------	--

ATIS 127.2	GUAM APP CON 118.4 290.5	SAIPAN TOWER 125.7 256.9	GND CON 121.8
----------------------	------------------------------------	------------------------------------	-------------------------



ELEV 215 **D** TDZE 215

REIL Rwy 25
HIRL Rwys 7-25 and 6-24

Remain within 10 NM SHAKA I-GSN 5 2000 1300 2.85° TCH 57 2 NM 0.9 NM 0.5	1600 ↑ SN 070°	3000 ↻ I-GSN 3 SN NDB I-GSN 2.1	SN ○ SN 246°	SHAKA I-GSN 5 ↑ SN 246°
	CATEGORY A S-7 C CIRCLING	B 760-3/4 545 (600-3/4) 760-1 545 (600-1)	C 760-1 1/8 545 (600-1 1/8) 760-1 1/8 545 (600-1 1/8)	D 780-2 565 (600-2)

PAC, 07 OCT 2021 to 02 DEC 2021

PAC, 07 OCT 2021 to 02 DEC 2021