

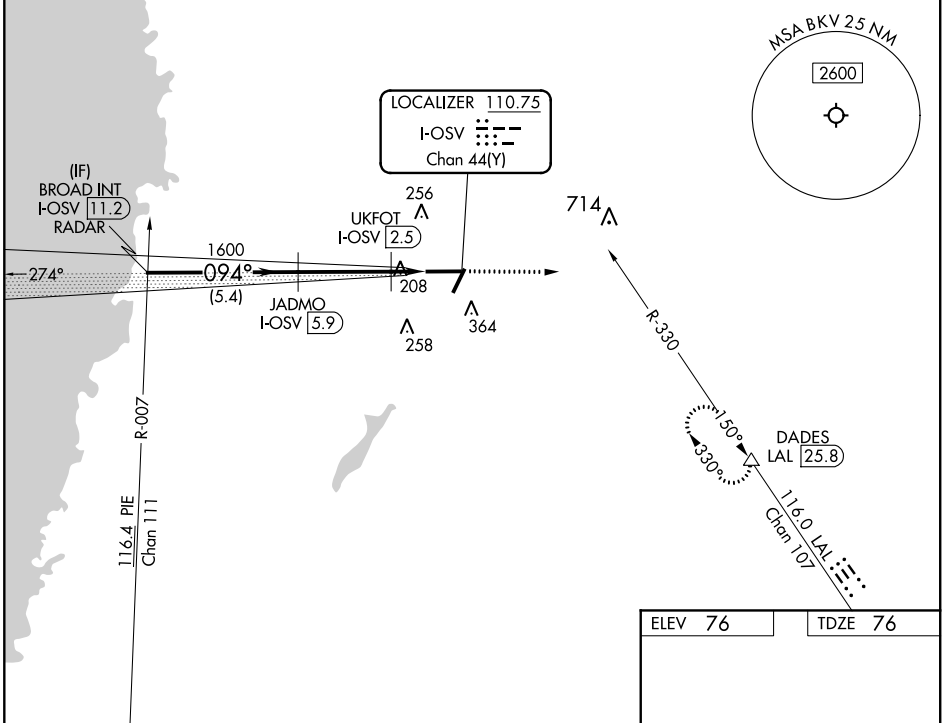
LOC/DME I-OSV 110.75 Chan 44(Y)	APP CRS 094°	Rwy Idg 7001 TDZE 76 Apt Elev 76
--	------------------------	---

ILS or LOC RWY 9

BROOKSVILLE-TAMPA BAY RGNL (BKV)

RADAR required for procedure entry. DME required.		MALSR 	MISSED APPROACH: Climb to 3000 on heading 090° and LAL VORTAC R-330 to DADES/LAL VORTAC 25.8 DME and hold.

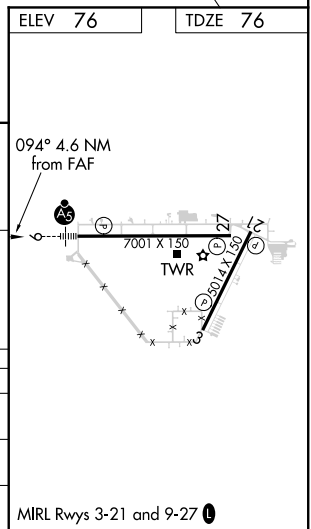
ASOS 134.725	TAMPA APP CON 125.3 316.05	BROOKSVILLE TOWER ★ 118.55 (CTAF) 0	GND CON 121.4	CLNC DEL 119.125	UNICOM 123.0
------------------------	--------------------------------------	---	-------------------------	----------------------------	------------------------



SE-3, 04 NOV 2021 to 02 DEC 2021

SE-3, 04 NOV 2021 to 02 DEC 2021

BROAD INT I-OSV 11.2 RADAR		3000 hdg 090°		LAL R-330	DADES
2000		1600		094° 4.6 NM from FAF	
GS 3.00° TCH 57		*520		*LOC only.	
5.4 NM		3.3 NM		1.3 NM	
CATEGORY	A	B	C	D	
S-ILS 9	276-1/2		200 (200-1/2)		
S-LOC 9	460-1/2	384 (400-1/2)		460-5/8	384 (400-5/8)
CIRCLING	680-1	604 (700-1)		680-1 3/4 604 (700-1 3/4)	760-2 1/4 684 (700-2 1/4)



MIRL Rwy 3-21 and 9-27 0